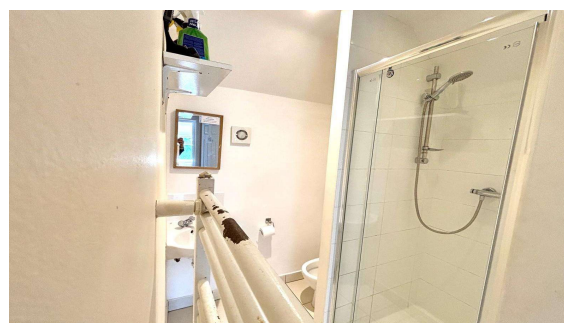
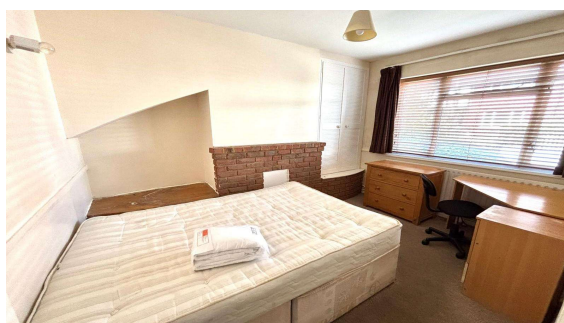




Magna Road, Englefield Green, TW20 0PN

£450,000 F/H



INVESTMENT BUYERS ONLY!

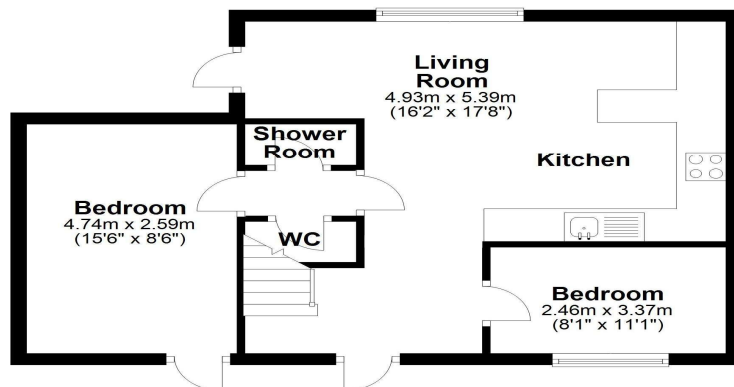
Currently as a five bedroom student rental with two bathrooms. Parking and having a double storey extension plus study room. Currently let for £3,125pcm achieving a minimum yield of 8.3% for the academic year of 2025/2026 from 9 August 2025. Being sold as one of a portfolio of five, at an asking price of £2,225,000 for those wishing to buy the whole portfolio, which all have tenants.

Magna Road, Englefield Green, Surrey, TW20 0PN

FLOOR PLAN

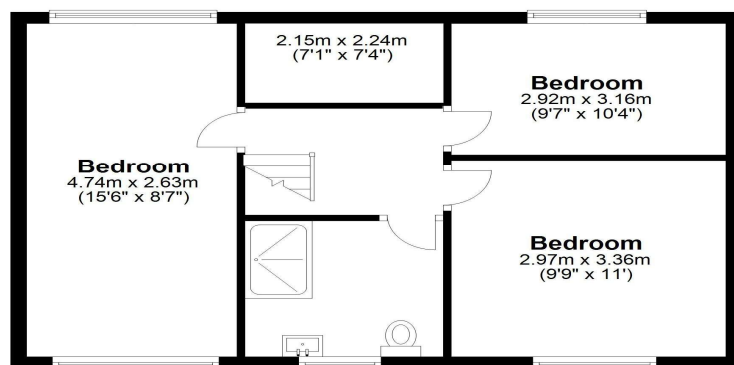
Ground Floor

Approx. 45.6 sq. metres (491.3 sq. feet)



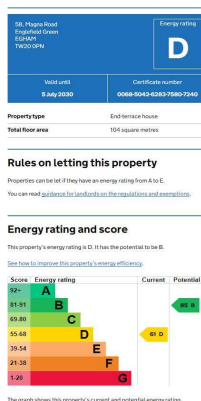
First Floor

Approx. 50.5 sq. metres (543.5 sq. feet)



Total area: approx. 96.1 sq. metres (1034.8 sq. feet)

EPC



COUNCIL TAX BAND:

D - Runnymede Borough Council

VIEWINGS:

By appointment with the clients selling agents,
Nevin & Wells Residential on 01784 437 437 or
visit www.nevinandwells.co.uk



All measurements are approximate. Nevin & Wells Residential have not tested any systems or appliances.