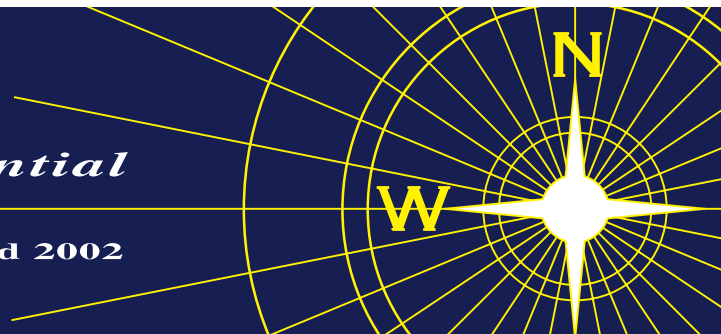


NEVIN & WELLS

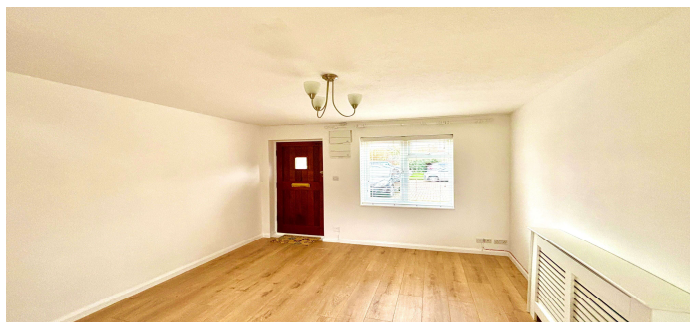
Residential

Established 2002



Windermere Close, Egham, Surrey, TW20 8JR

£300,000 F/H



A superb end of terrace one bedroom starter home on the popular Bourne Lea development. This property is in excellent condition with its own private rear garden. Situated in a quiet cul-de-sac close to Egham High Street, station and Magna Square with Everyman Cinema and restaurants. Being sold with no onward chain and the huge benefit of garage in nearby block.

169/170 High Street, Egham, Surrey, TW20 9EJ
Tel. 01784 437 437 Fax. 01784 436 456
www.nevinandwells.co.uk

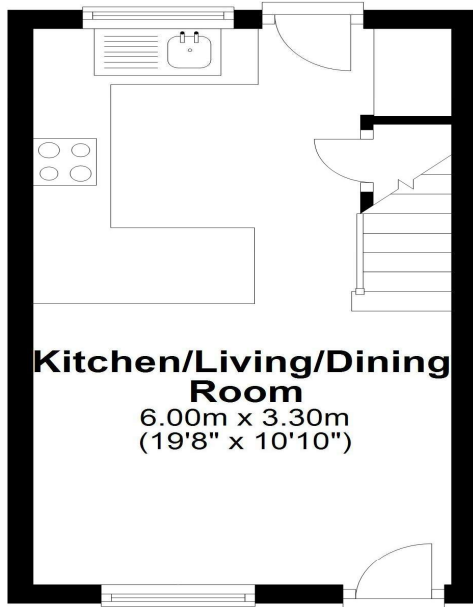


Windermere Close, Egham, Surrey, TW20 8JR

FLOOR PLAN

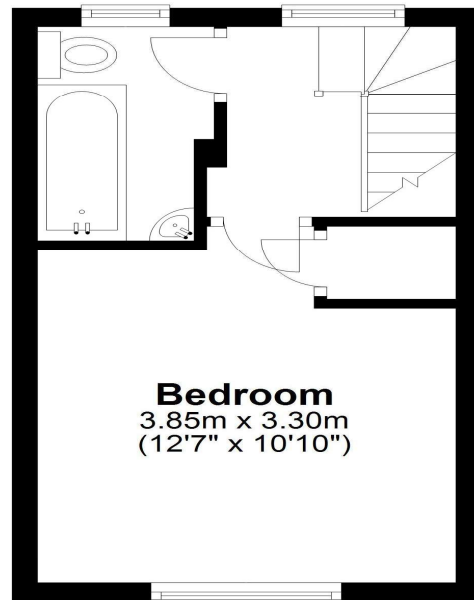
Ground Floor

Approx. 19.8 sq. metres (213.0 sq. feet)



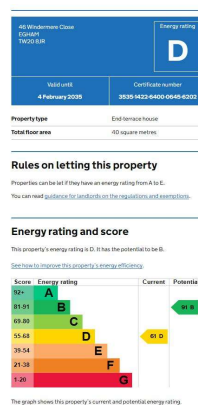
First Floor

Approx. 19.8 sq. metres (213.0 sq. feet)



Total area: approx. 39.6 sq. metres (426.0 sq. feet)

EPC



COUNCIL TAX BAND:

C - Runnymede Borough Council

VIEWINGS:

By appointment with the clients selling agents,
Nevin & Wells Residential on 01784 437 437 or
visit www.nevinandwells.co.uk



All measurements are approximate. Nevin & Wells Residential have not tested any systems or appliances.