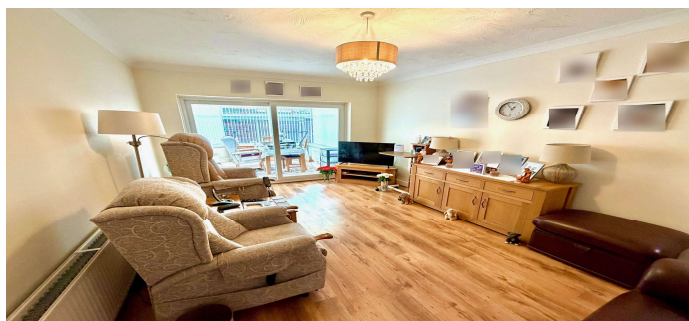




Cambridge Road, Ashford, TW15 1UF

£500,000 F/H



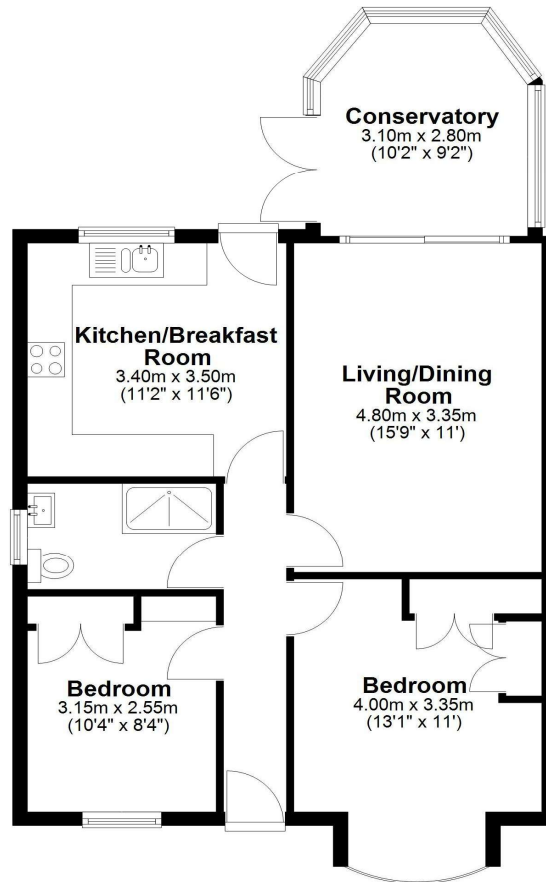
An excellent opportunity to acquire this detached bungalow located in a popular residential road in Ashford within walking distance of local amenities and public transport facilities. Accommodation comprises entrance hallway, two bedrooms, luxury family shower room, living room, conservatory, modern fitted kitchen/dining room, private rear garden and off street parking. Further benefits include potential to extend or loft convert (S.T.P.P). No onward chain

Cambridge Road, Ashford, Middlesex, TW15 1UF

FLOOR PLAN

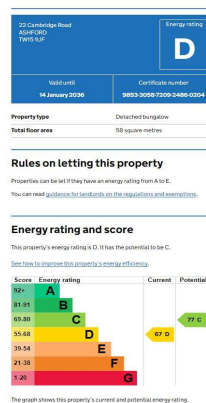
Ground Floor

Approx. 67.4 sq. metres (725.7 sq. feet)



Total area: approx. 67.4 sq. metres (725.7 sq. feet)

EPC



COUNCIL TAX BAND:

D - Spelthorne Borough Council

VIEWINGS:

**By appointment with the clients selling agents,
Nevin & Wells Residential on 01784 437 437 or
visit www.nevinandwells.co.uk**



All measurements are approximate. Nevin & Wells Residential have not tested any systems or appliances.