



The Avenue, Egham, TW20 9AD

O.I.E.O £525,000



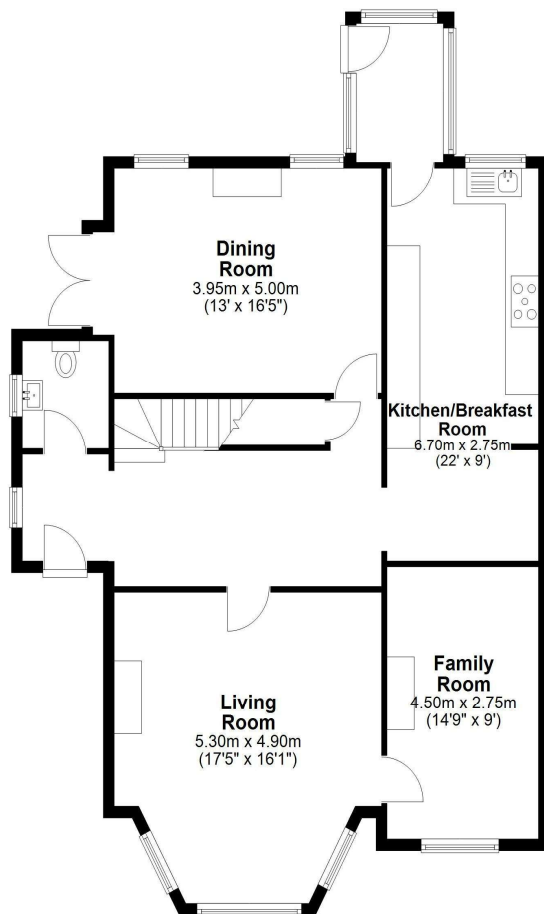
Being sold with huge potential to convert into apartments/bed-sits (S.T.P.P) or put back to its former glory, is this vast four bedroom Edwardian semi-detached home. There is a generous side plot with garage as well as potential for up to ten vehicles to front. Situated within ten minutes of mainline station and Magna Square with Everyman cinema and easy access to M25

The Avenue, Egham, Surrey, TW20 9AD

FLOOR PLAN

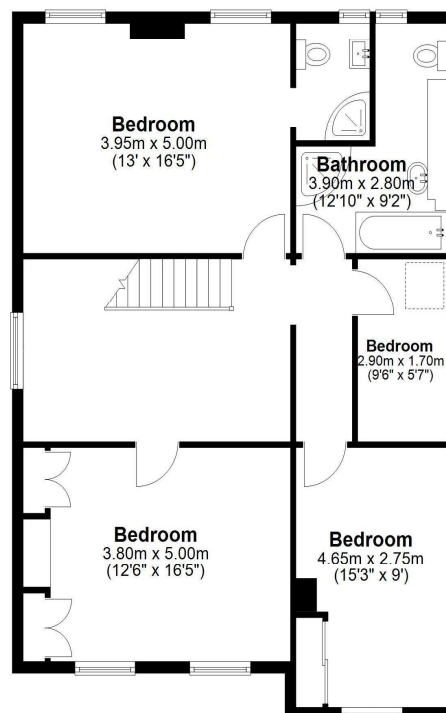
Ground Floor

Approx. 102.2 sq. metres (1099.8 sq. feet)



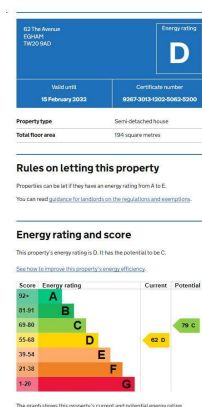
First Floor

Approx. 88.9 sq. metres (956.9 sq. feet)



Total area: approx. 191.1 sq. metres (2056.7 sq. feet)

EPC



COUNCIL TAX BAND:

F - Runnymede Borough Council

VIEWINGS:

**By appointment with the clients selling agents,
Nevin & Wells Residential on 01784 437 437 or visit
www.nevinandwells.co.uk**



All measurements are approximate. Nevin & Wells Residential have not tested any systems or appliances.