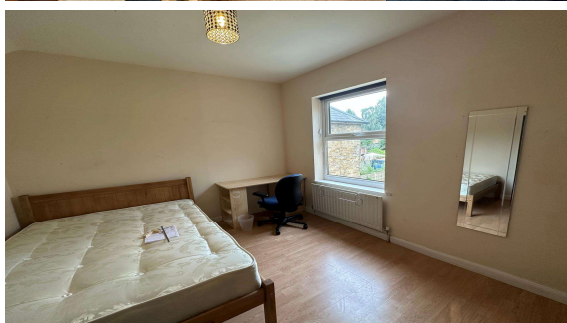
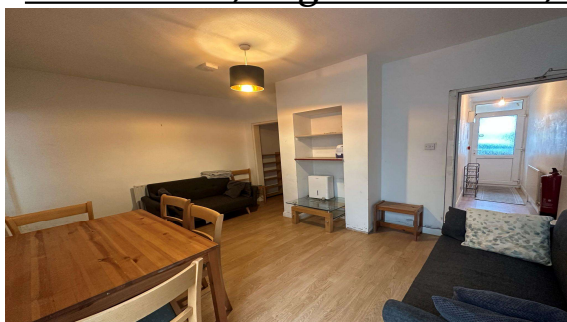


Albert Road, Englefield Green, TW20 0RQ

£495,000 F/H



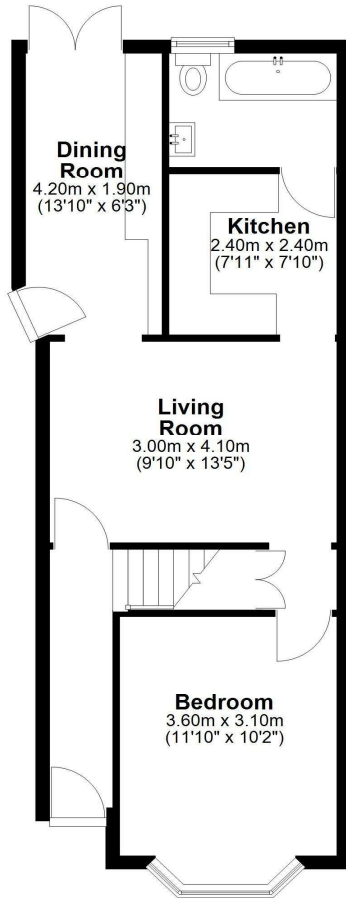
A substantially extended Victorian terrace residence located in the heart of Englefield Green village, situated within just yards of village amenities, village green and public transport facilities. Accommodation comprises entrance hallway, two/three reception rooms, kitchen, two bathrooms, five/six bedrooms and a private rear garden. Earliest exchange and completion August 2026

Albert Road, Englefield Green, Surrey, TW20 0RQ

FLOOR PLAN

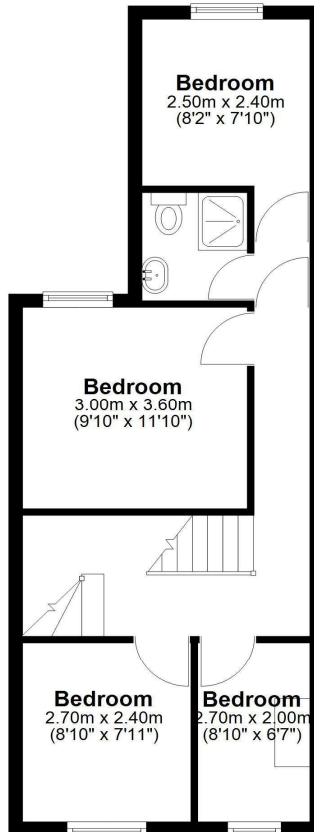
Ground Floor

Approx. 50.1 sq. metres (539.0 sq. feet)



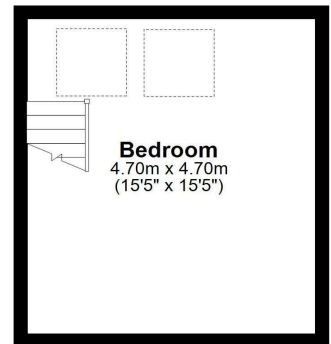
First Floor

Approx. 41.9 sq. metres (450.8 sq. feet)



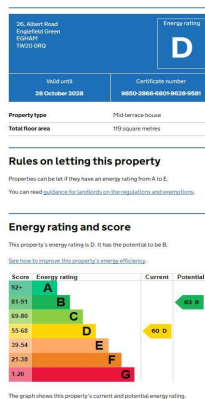
Second Floor

Approx. 19.3 sq. metres (207.4 sq. feet)



Total area: approx. 111.2 sq. metres (1197.2 sq. feet)

EPC



COUNCIL TAX BAND:

E - Runnymede Borough Council

VIEWINGS:

By appointment with the clients selling agents,
Nevin & Wells Residential on 01784 437 437 or visit
www.nevinandwells.co.uk



All measurements are approximate. Nevin & Wells Residential have not tested any systems or appliances.