

Vicarage Court, Egham, TW20 8NS

£575,000 F/H



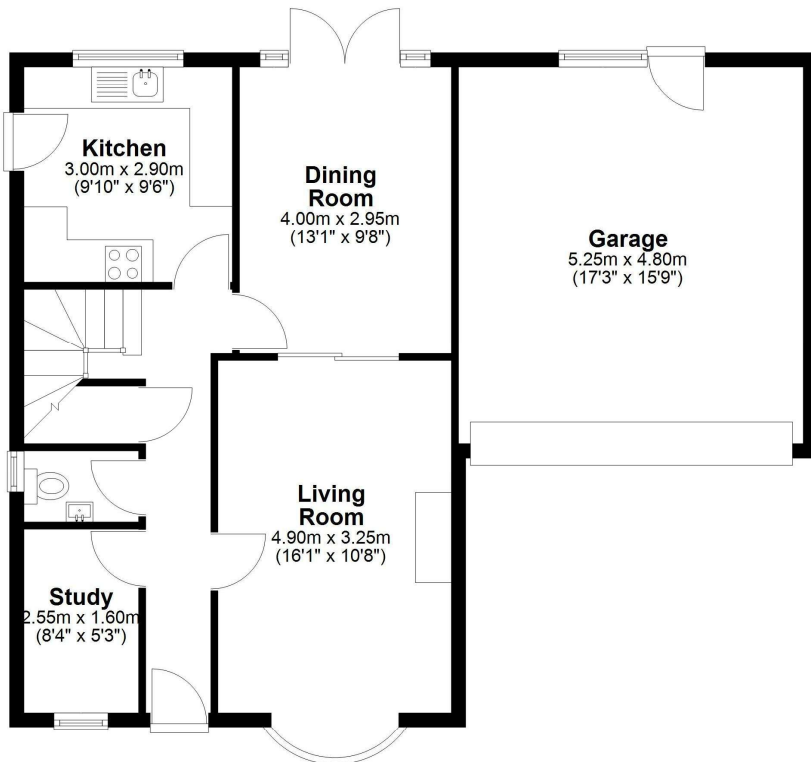
A four bedroom detached home situated in a cul de sac within walking distance of High Street, Magna Square and mainline station. The property is in need of some modernisation and does offer en-suite facilities, study, double width garage, two reception rooms, 50ft garden and no onward chain.

Vicarage Court, Egham, Surrey, TW20 8NS

FLOOR PLAN

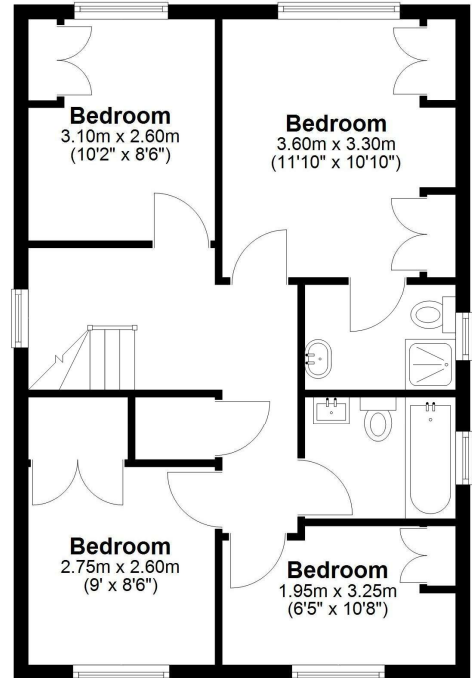
Ground Floor

Approx. 79.6 sq. metres (856.7 sq. feet)



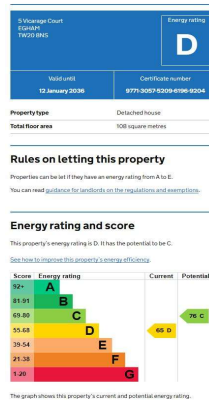
First Floor

Approx. 53.8 sq. metres (579.4 sq. feet)



Total area: approx. 133.4 sq. metres (1436.1 sq. feet)

EPC



COUNCIL TAX BAND:

F - Runnymede Borough Council

VIEWINGS:

**By appointment with the clients selling agents,
Nevin & Wells Residential on 01784 437 437 or visit
www.nevinandwells.co.uk**



All measurements are approximate. Nevin & Wells Residential have not tested any systems or appliances.