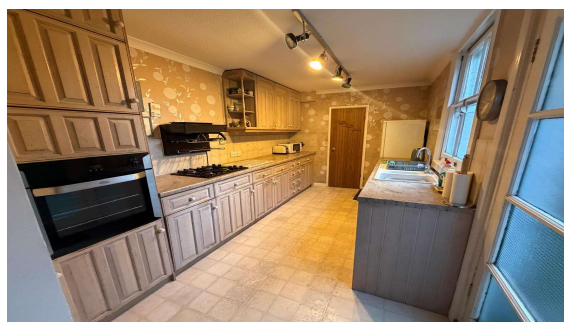


Milton Road, Egham, TW20 9PF

£475,000 F/H



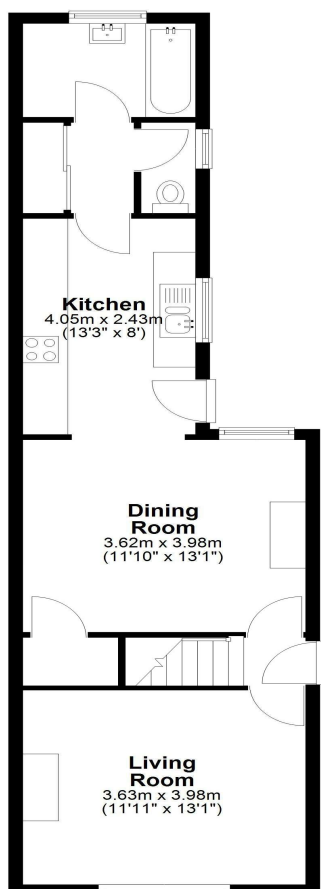
Located within just yards of Egham High Street amenities, Magna Square and mainline train station is this three bedroom Victorian semi-detached residence. Accommodation comprises entrance hallway, two reception rooms, kitchen, bathroom, separate WC and a private rear garden. No onward chain

Milton Road, Egham, Surrey, TW20 9PF

FLOOR PLAN

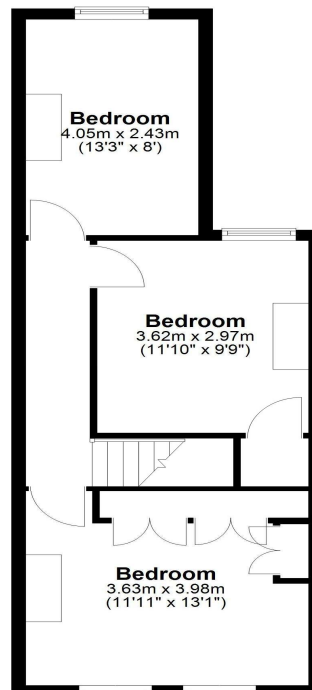
Ground Floor

Approx. 52.1 sq. metres (561.2 sq. feet)



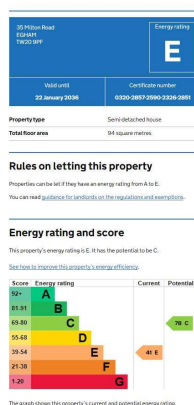
First Floor

Approx. 43.2 sq. metres (465.5 sq. feet)



Total area: approx. 95.4 sq. metres (1026.7 sq. feet)

EPC



COUNCIL TAX BAND:

E - Runnymede Borough Council

VIEWINGS:

**By appointment with the clients selling agents,
Nevin & Wells Residential on 01784 437 437 or visit
www.nevinandwells.co.uk**



All measurements are approximate. Nevin & Wells Residential have not tested any systems or appliances.