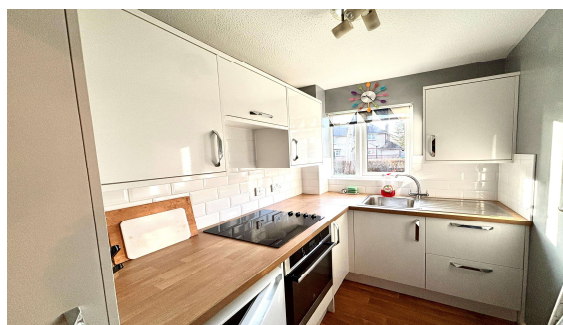




Berryscroft Court, Staines, TW18 1NA

£150,000 L/H

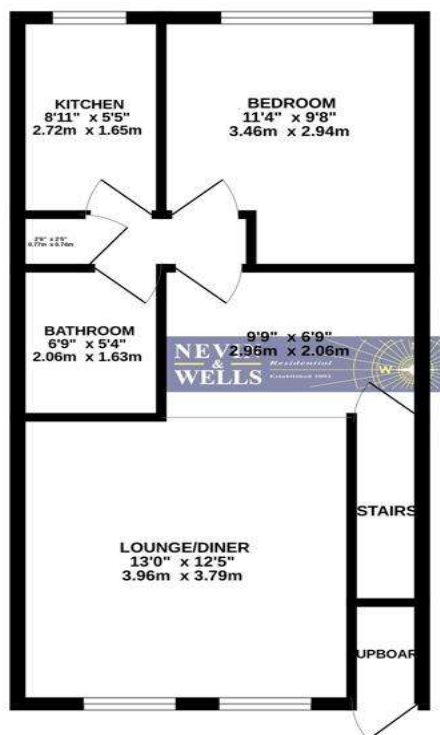


A superb and large than average one bedroom ground floor, warden assisted retirement flat for the over 60's. Conveniently located close to local shops and frequent bus service. Excellent condition throughout and situated next to the communal lounge for those seeking some friendly company. Being sold with no onward chain.

Berryscroft, Staines-upon-Thames, Middlesex, TW18 1NA

FLOOR PLAN

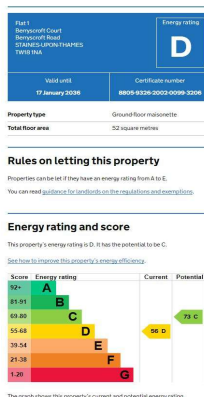
GROUND FLOOR
468 sq.ft. (43.5 sq.m.) approx.



TOTAL FLOOR AREA : 468 sq.ft. (43.5 sq.m.) approx.

Whilst every attempt has been made to ensure the accuracy of the floorplan contained here, measurements of doors, windows, rooms and any other items are approximate and no responsibility is taken for any error, omission or mis-statement. This plan is for illustrative purposes only and should be used as such by any prospective purchaser. The services, systems and appliances shown have not been tested and no guarantee as to their operability or efficiency can be given.
Made with Metropix 152026

EPC



COUNCIL TAX BAND:

C - Spelthorne Borough Council

LEASE:

125 years from April 1989 (awaiting written confirmation)

SERVICE CHARGES:

£264.17 pcm (awaiting written confirmation)

VIEWINGS:

By appointment with the clients selling agents,
Nevin & Wells Residential on 01784 437 437 or visit
www.nevinandwells.co.uk



All measurements are approximate. Nevin & Wells Residential have not tested any systems or appliances.