

NEVIN & WELLS

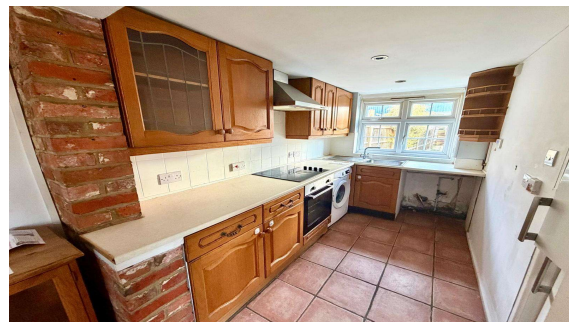
Residential

Established 2002



Pond Road, Egham, TW20 8BG

O.I.E.O £375,000 F/H



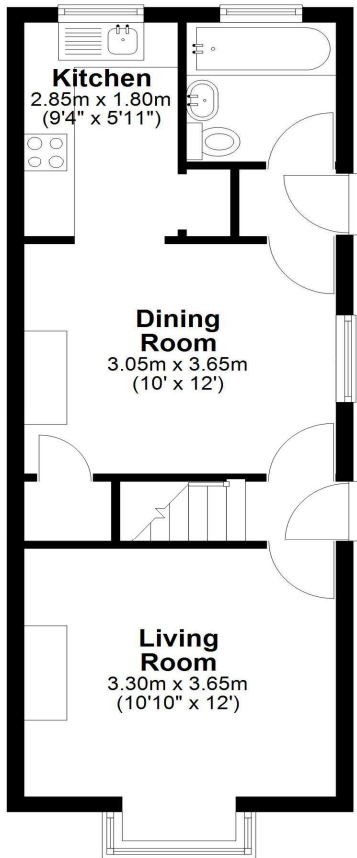
An excellent opportunity to acquire this two bedroom Victorian semi-detached property with own driveway providing off street parking for up to two vehicles. Accommodation comprises two reception rooms, kitchen, family bathroom, two double bedrooms and a private rear garden. Situated within just yards of local shops, schools and local playing field. No onward chain

Pond Road, Egham, Surrey, TW20 8BG

FLOOR PLAN

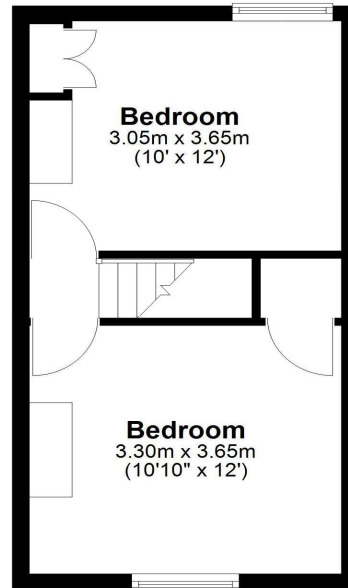
Ground Floor

Approx. 38.0 sq. metres (408.6 sq. feet)



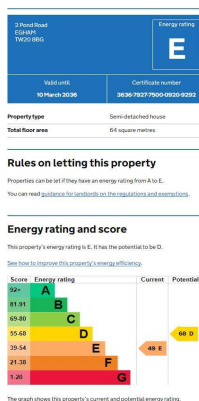
First Floor

Approx. 26.8 sq. metres (288.6 sq. feet)



Total area: approx. 64.8 sq. metres (697.2 sq. feet)

EPC



COUNCIL TAX BAND:

C - Runnymede Borough Council

VIEWINGS:

**By appointment with the clients selling agents,
Nevin & Wells Residential on 01784 437 437 or visit
www.nevinandwells.co.uk**



All measurements are approximate. Nevin & Wells Residential have not tested any systems or appliances.