

NEVIN & WELLS

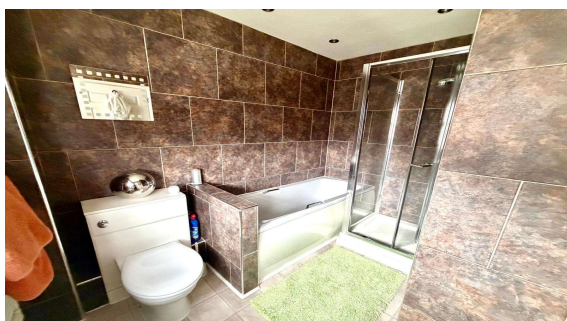
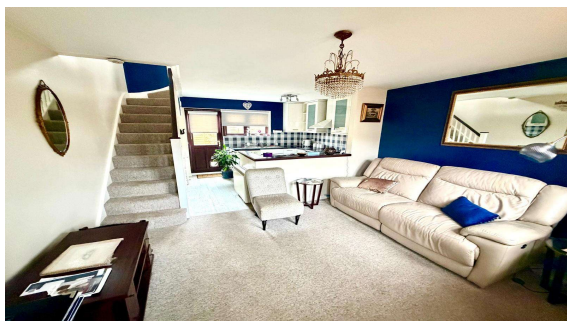
Residential

Established 2002



Amberley Terrace, Egham, Surrey, TW20 8HD

£280,000 F/H



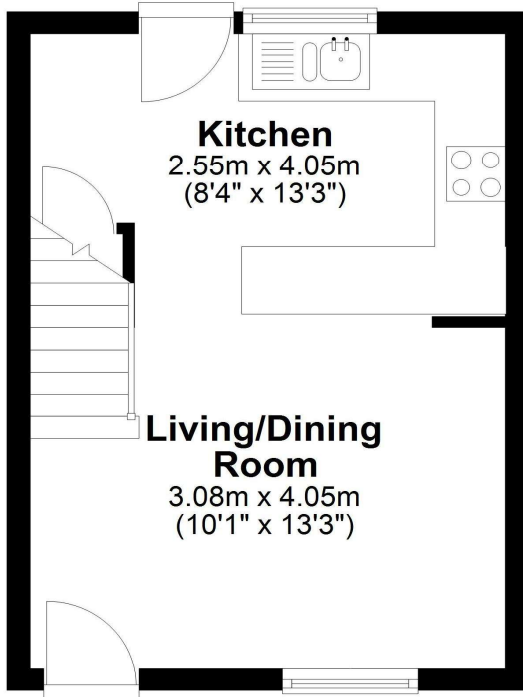
A very well presented end terrace house with own private rear garden and parking. Located within just yards of local shops and public transport facilities. Accommodation comprises lounge/dining room, open plan fitted kitchen, double bedroom and modern four piece bathroom suite. No onward chain.

Amberley Terrace, Egham, Surrey, TW20 8HD

FLOOR PLAN

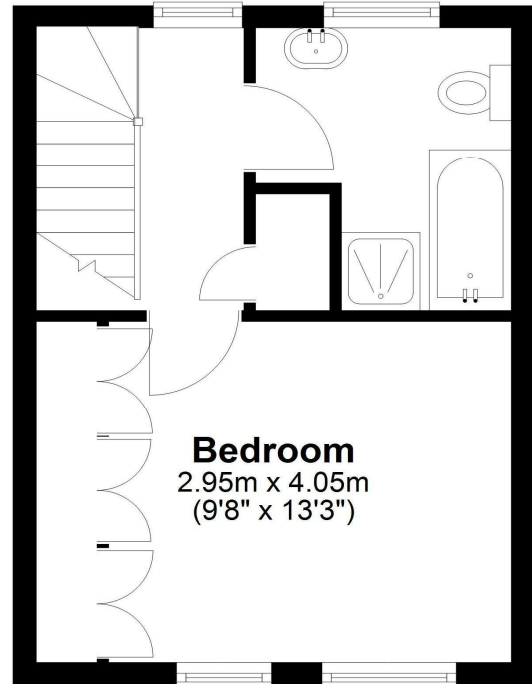
Ground Floor

Approx. 23.2 sq. metres (249.7 sq. feet)



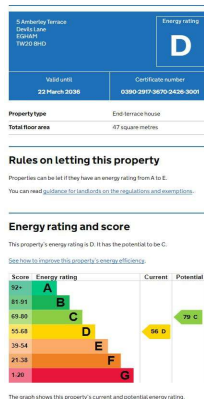
First Floor

Approx. 22.7 sq. metres (244.1 sq. feet)



Total area: approx. 45.9 sq. metres (493.8 sq. feet)

EPC



COUNCIL TAX BAND:

C - Runnymede Borough Council

VIEWINGS:

By appointment with the clients selling agents,
Nevin & Wells Residential on 01784 437 437 or visit
www.nevinandwells.co.uk



All measurements are approximate. Nevin & Wells Residential have not tested any systems or appliances.