

NEVIN & WELLS

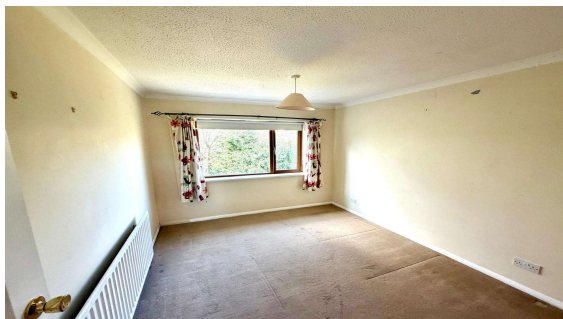
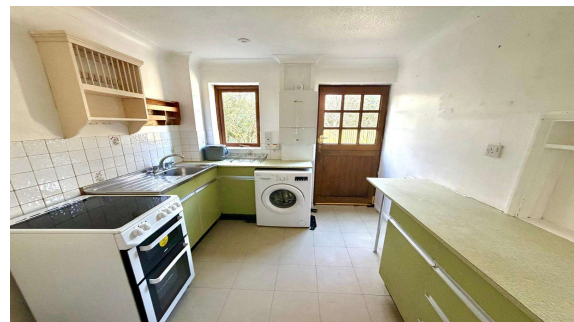
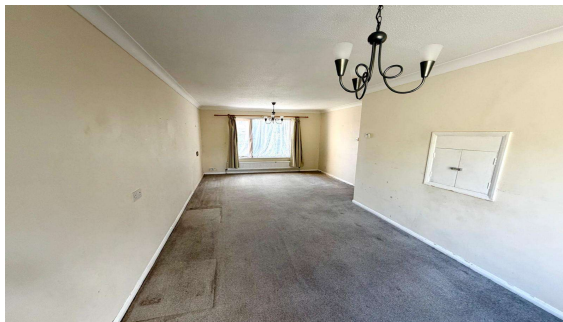
Residential

Established 2002



Heronfield, Englefield Green, TW20 0RG

£385,000 F/H



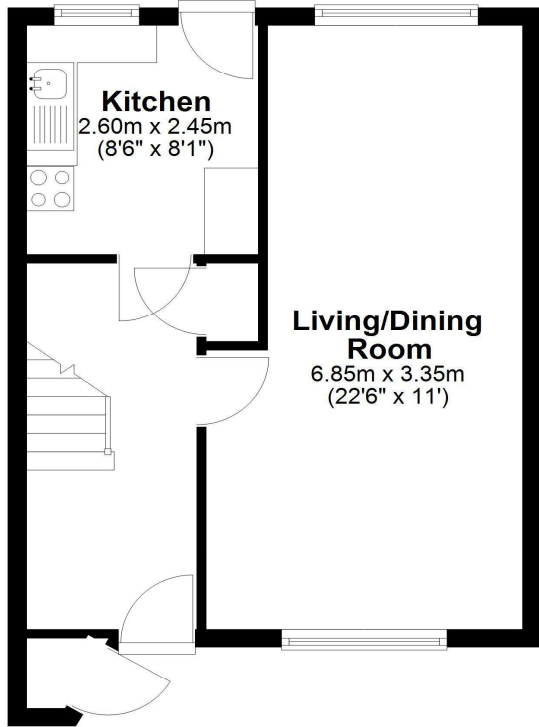
Situated within a cul-de-sac is this two double bedroom end terrace property offering own private rear garden and parking facilities. This property is conveniently located within just yards of village shops, Green, RHUL and Windsor Great Park/Savill Gardens. Accommodation comprises entrance hallway, lounge/dining room, kitchen and first floor bathroom. No onward chain.

Heronfield, Englefield Green, Surrey, TW20 0RG

FLOOR PLAN

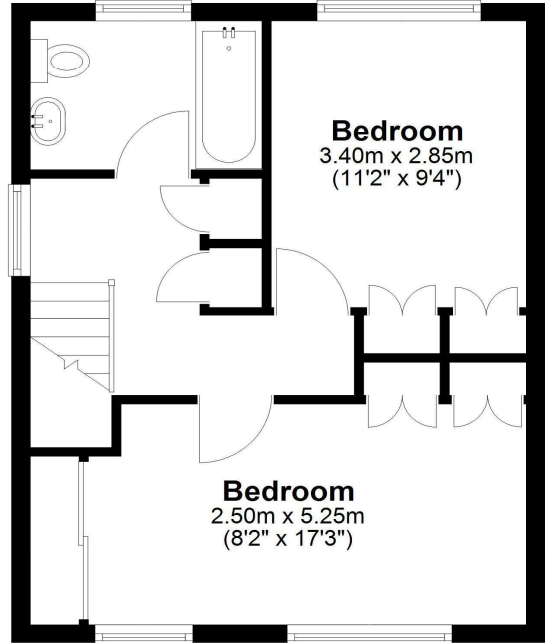
Ground Floor

Approx. 36.6 sq. metres (393.6 sq. feet)



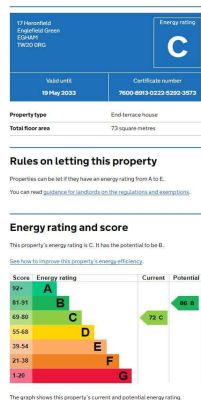
First Floor

Approx. 36.9 sq. metres (397.1 sq. feet)



Total area: approx. 73.5 sq. metres (790.8 sq. feet)

EPC



COUNCIL TAX BAND:

D - Runnymede Borough Council

VIEWINGS:

By appointment with the clients selling agents,
Nevin & Wells Residential on 01784 437 437 or visit
www.nevinandwells.co.uk



All measurements are approximate. Nevin & Wells Residential have not tested any systems or appliances.