



Yew Trees, Thorpe, Surrey, TW20 8TP

£465,000 F/H



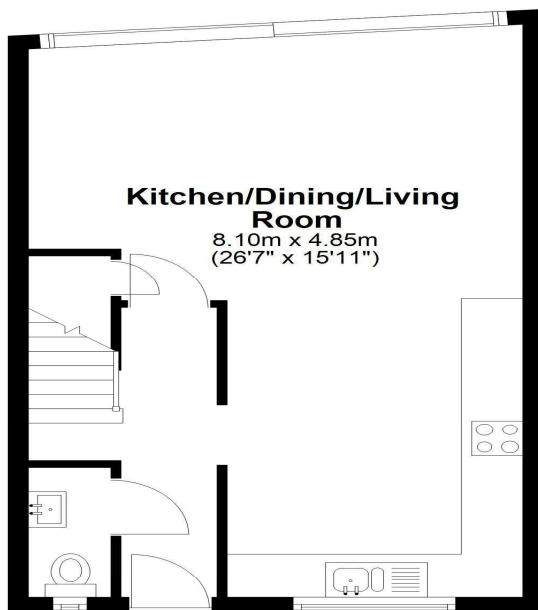
A well presented terraced home, situated in a quiet mews, close to village shop and pub. This spacious property offers three bedrooms, large lounge, open plan kitchen/diner, two bathrooms and downstairs cloakroom. Externally, there is a secluded 30ft (9.14m) garden backing onto a field and access to garage in block. Both Egham and Virginia Water are a mile away. Local school and recreation park are a few minutes' walk. No onward chain.

Yew Trees, Thorpe, Surrey, TW20 8TP

FLOOR PLAN

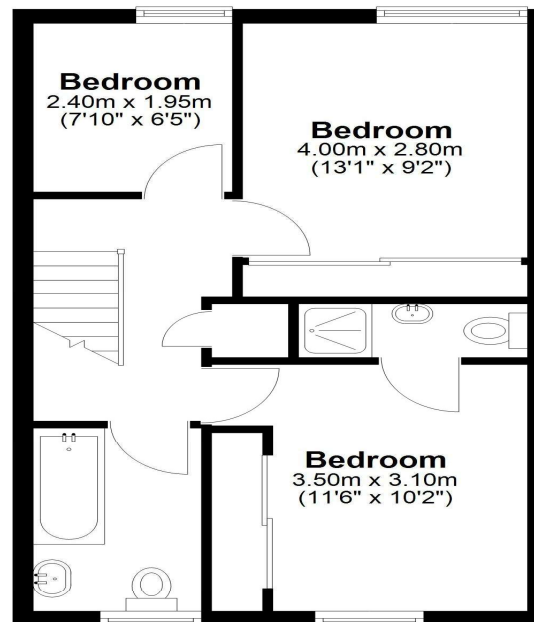
Ground Floor

Approx. 38.4 sq. metres (413.8 sq. feet)



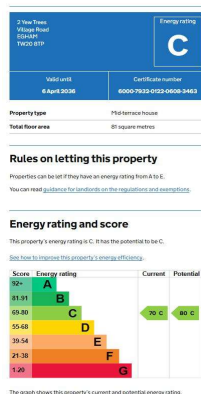
First Floor

Approx. 40.3 sq. metres (433.9 sq. feet)



Total area: approx. 78.7 sq. metres (847.6 sq. feet)

EPC



REAR GARDEN:

30ft (9.14m) secluded walled garden

GARAGE:

Single garage in block

COUNCIL TAX BAND:

D - Runnymede Borough Council

VIEWINGS:

By appointment with the clients selling agents,
Nevin & Wells Residential on 01784 437 437 or visit
www.nevinandwells.co.uk



All measurements are approximate. Nevin & Wells Residential have not tested any systems or appliances.