

# NEVIN & WELLS

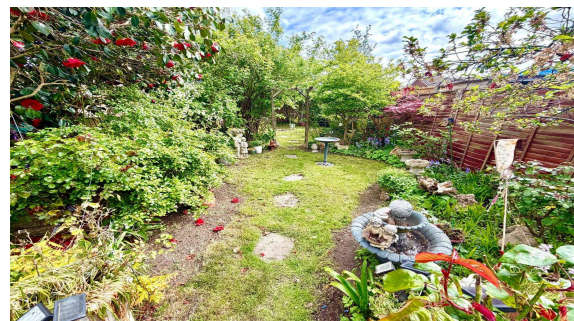
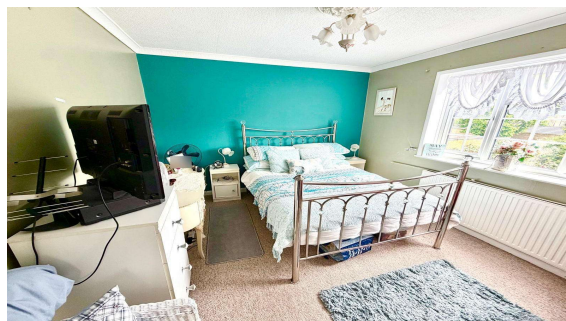
*Residential*

Established 2002



**Riverside Place, Stanwell, TW19 7LP**

**£600,000 F/H**



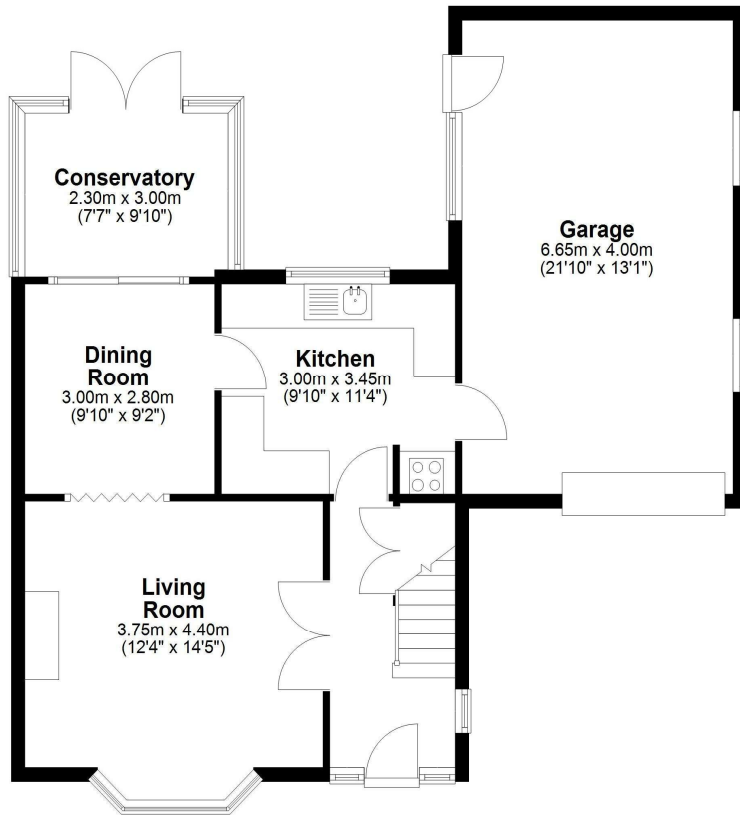
Located in the heart of Stanwell Village within easy access to schools, amenities, Heathrow Airport and Hatton Cross is this detached residence which offers an excellent opportunity to extend to the side (S.T.P.P). Accommodation comprises entrance hallway, three reception rooms, kitchen, double garage, three bedrooms, first floor shower room. private rear garden and off street parking for up to three vehicles. No onward chain.

# Riverside Place, Stanwell, Middlesex, TW19 7LP

## FLOOR PLAN

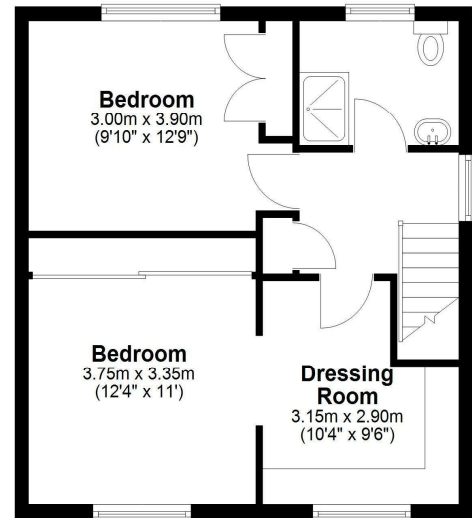
### Ground Floor

Approx. 77.9 sq. metres (838.9 sq. feet)



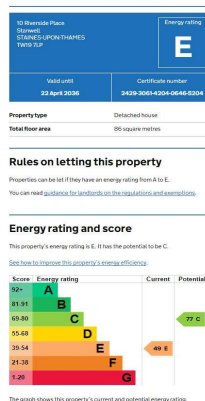
### First Floor

Approx. 43.3 sq. metres (465.7 sq. feet)



Total area: approx. 121.2 sq. metres (1304.5 sq. feet)

## EPC



**COUNCIL TAX BAND:**

**D - Spelthorne Borough Council**

**VIEWINGS:**

By appointment with the clients selling agents,  
Nevin & Wells Residential on 01784 437 437 or visit  
[www.nevinandwells.co.uk](http://www.nevinandwells.co.uk)



All measurements are approximate. Nevin & Wells Residential have not tested any systems or appliances.