



**Beechtree Avenue, Englefield Green, TW20 0TD £375,000 F/H**



Currently let as a four bedroom house, we are pleased to offer what originally was a three bedroom family home. The property currently achieves £1,500 per calendar month (£18,000 per annum) until 10<sup>th</sup> September 2022. Situated close to shops and Royal Holloway University.

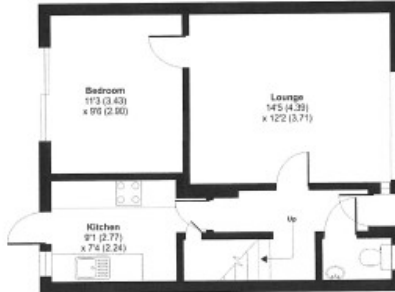
Beechtree Avenue, Englefield Green, Surrey, TW20 0SR

**FLOOR PLAN**

APPROX. GROSS INTERNAL FLOOR AREA 938 SQ FT 87.1 SQ METRES



FIRST FLOOR



GROUND FLOOR

Whilst every effort has been made to ensure the accuracy of the floor plan contained here, measurements of doors, windows and rooms are approximate and no responsibility is taken for any error, omission or misstatement. These plans are for representational purposes only in relation to the Code of Measuring Practice and should be used as such by any prospective purchaser. Specifically no guarantee is given on the total square footage of the property if quoted on this plan. Any figure given is for initial guidance only and should not be relied on as a basis of valuation.

Copyright richcom.co.uk 2017 Produced for Baron Residential REF : 232211

All measurements are approximate. Nevin & Wells Residential have not tested any systems or appliances.

**AWAITING EPC**