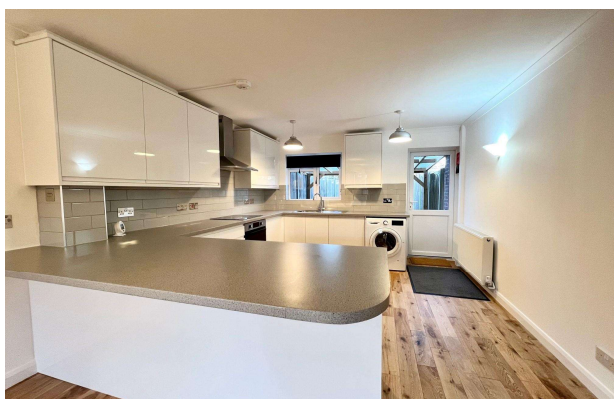




Grove Court, Egham, Surrey, TW20 9PZ

£1,500 pcm Unfurnished

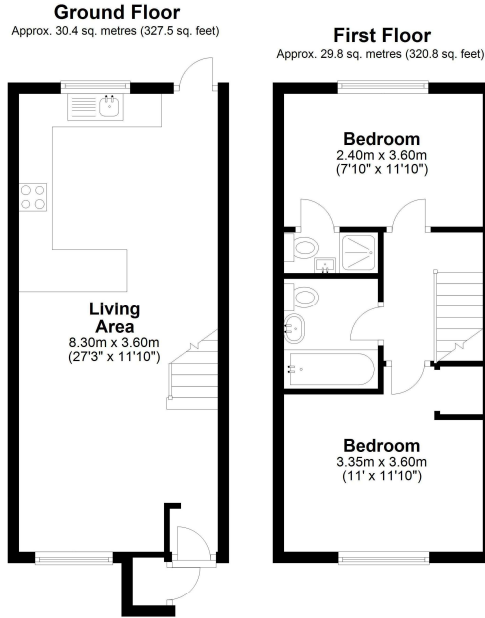


A stunning refurbished two double bedroom mid terrace property located within a few minutes walk of Waitrose and new Magna Square development including Everyman Cinema. This beautiful home comprises open plan lounge kitchen with breakfast bar area, whilst upstairs there's two double bedrooms, an en-suite shower room and family bathroom. The private rear garden is part porcelain tile, part artificial grass, so ideal for those wanting low maintenance. Further benefits include allocated parking to the front, whilst Egham mainline station is also within a five minute walk.

AVAILABLE NOW

Grove Court, Egham, Surrey, TW20 9PZ

FLOORPLAN



Total area: approx. 60.2 sq. metres (648.3 sq. feet)

All measurements are approximate. Nevin & Wells Residential have not tested any systems or appliances.

EPC

