



Mead Court, Egham, Surrey, TW20 8XF

OIEO £250,000 Leasehold

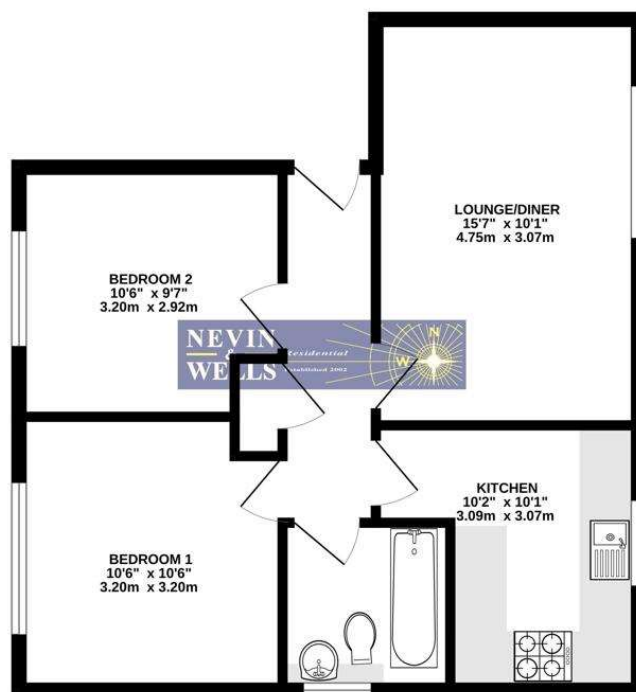


A larger than average two double bedroom first floor apartment. Accommodation comprises entrance hallway, lounge/dining room, kitchen and bathroom. Further benefits include allocated parking, double glazing and gas central heating, situated within walking distance of local shops and public transport facilities. An excellent first time buy or investment opportunity. **NO ONWARD CHAIN.**

Zero stamp duty for FIRST TIME BUYERS up to £425,000.

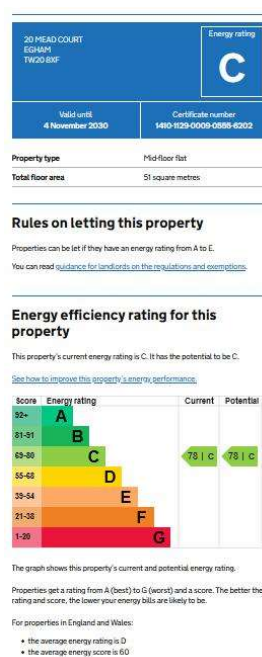
Mead Court, Egham, Surrey, TW20 8XF

FLOORPLAN



All measurements are approximate. Nevin & Wells Residential have not tested any systems or appliances.

EPC



CHARGES: £46.96 per calendar month (tbc)

LEASE LENGTH: In excess of 900 years

COUNCIL TAX BAND: C - Runnymede Borough Council