



Wetton Place, Surrey, TW20 9ER

£1,650 pcm Guide Price

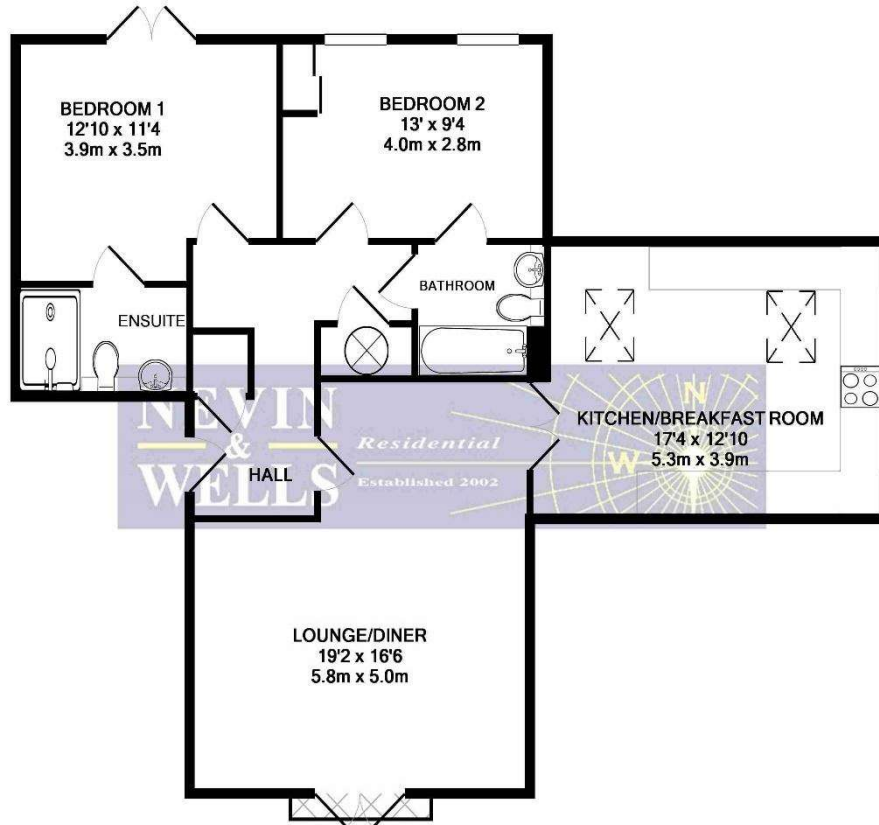


A truly stunning furnished two bedroom penthouse apartment, situated in a private gated development, minutes from the high street and mainline station. This huge property offers fitted kitchen / breakfast room, open plan lounge / dining room with Juliette balcony, two luxury bathrooms (one en-suite), high quality furniture, security entry phone, allocated parking and landscaped gardens.

AVAILABLE NOW - FURNISHED

Wetton Place, Egham, Surrey, TW20 9ER

FLOOR PLAN



TOTAL APPROX. FLOOR AREA 939 SQ.FT. (87.2 SQ.M.)

Whilst every attempt has been made to ensure the accuracy of the floor plan contained here, measurements of doors, windows, rooms and any other items are approximate and no responsibility is taken for any error, omission, or mis-statement. This plan is for illustrative purposes only and should be used as such by any prospective purchaser. The services, systems and appliances shown have not been tested and no guarantee as to their operability or efficiency can be given
Made with Metropix ©2018

All measurements are approximate. Nevin and Wells Residential have not tested any systems or appliances.

EPC

14 Wetton Court Wetton Place Egham TW20 9ER		Energy rating C
Valid until 8 December 2021	Certificate number 0486-0902-9202-7789-8294	

Property type: Top floor flat
Total floor area: 79 square metres

Rules on letting this property

Properties can be let if they have an energy rating from A to E.
[You can read guidance for landlords on the regulations and exemptions.](#)

Energy efficiency rating for this property

This property's current energy rating is C. It has the potential to be B.

[See how to improve this property's energy performance.](#)



The graph shows this property's current and potential energy rating.

Properties get a rating from A (best) to G (worst) and a score. The better the rating and score, the lower your energy bills are likely to be.

- For properties in England and Wales:
- the average energy rating is D
 - the average energy score is 60