



£290,000

2 Bedroom Maisonette for sale
4 Barnesdale Crescent, Orpington



EweMove
SALES AND LETTINGS



Overview

Perfect starter home close to schools and shops in between Petts Wood & St Mary Cray railway stations at a great price . First time buyers will suit this property. Don't miss out, just waiting for a young family or couple to make it their own. Viewings welcome.



Key Features

- Chain Free
- New 99+ Year Lease
- New Boiler
- Private Garden
- Close to Poverest Primary School
- Close to Perry Hall Primary School
- Convenient for Petts Wood Station
- Convenient for St Mary Cray Station



This chain-free, top-floor maisonette for sale in Orpington, has a guide price of £290,000 to £300,000. It has an open and airy feel, boasting large windows that let the light flood in seamlessly.

Situated just 5-minute drive from Petts Wood or the Nugent Retail Park, this cheery Maisonette is just a 3-minute walk from the main bus stop and 5 minutes from the popular Marion Crescent with its diverse selection of local shops.

Poverest Park is a stone's throw away with plenty of walking, woodland, tennis courts and the Excelsior Bowling Club.

Suit young couples looking to move to the area or first-time buyers.

Lounge Diner

13' 5" x 11' 8" (4.09m x 3.56m)

Master Bedroom

10' 4" x 7' 8" (3.16m x 2.35m)

Bedroom Two

9' 7" x 7' 3" (2.93m x 2.21m)

Kitchen

7' 10" x 6' 8" (2.41m x 2.05m)

Bathroom

7' 10" x 4' 4" (2.41m x 1.34m)

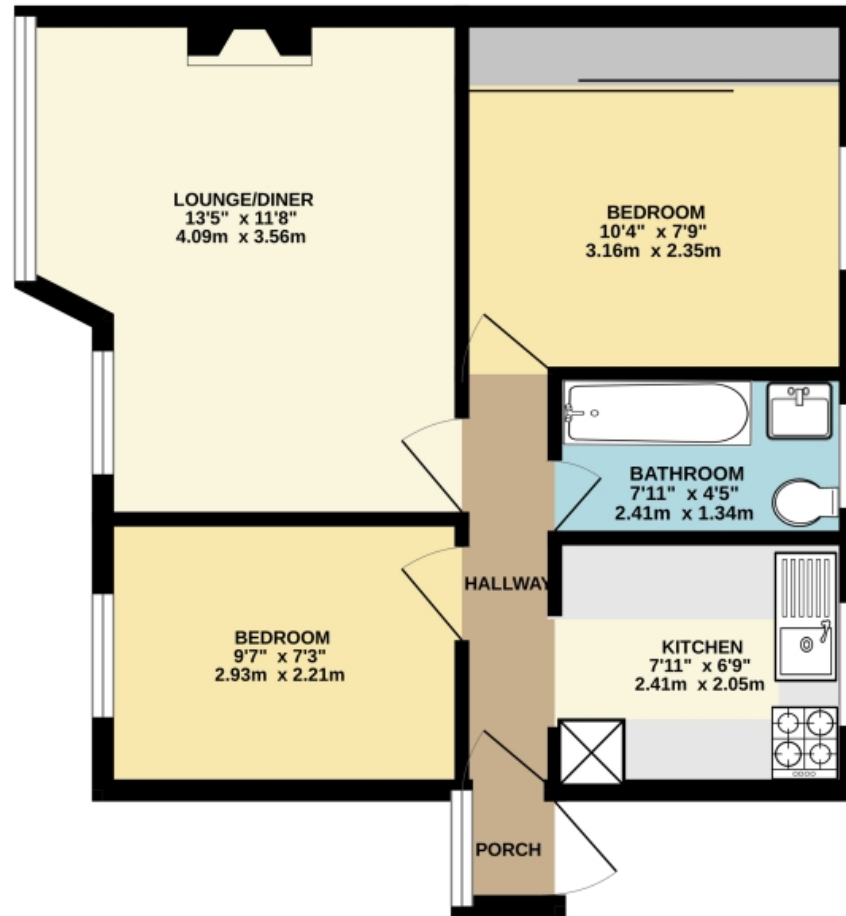
Hallway

13' 1" x 3' 7" (4.00m x 1.10m)




Floorplans

GROUND FLOOR
433 sq.ft. (40.2 sq.m.) approx.



TOTAL FLOOR AREA: 433 sq.ft. (40.2 sq.m.) approx.

Whilst every attempt has been made to ensure the accuracy of the floorplan contained here, measurements of doors, windows, rooms and any other items are approximate and no responsibility is taken for any error, omission or mis-statement. This plan is for illustrative purposes only and should be used as such by any prospective purchaser. The services, systems and appliances shown have not been tested and no guarantee as to their operability or efficiency can be given.
Made with Metroplex ©2023

Energy Efficiency Rating		
	Current	Potential
<i>Very energy efficient - lower running costs</i>		
92-100 A		
81-91 B		
69-80 C		
55-68 D		
39-54 E		
21-38 F		
1-20 G		
<i>Not energy efficient - higher running costs</i>		
England & Wales	EU Directive 2002/91/EC	



Marketed by Ewemove Chelsfield

01689 663 331 (24/7)
chelsfield@ewemove.com

