



**Crown Street, Egham, Surrey, TW20 9BH**

**£1,700pcm Guide Price**



Having been completely refurbished is this stunning three bedroom semi-detached home, situated in the heart of Egham, close to the High Street, Magna Square and mainline station. This property is light and airy with private garden, off street parking and first floor bathroom. **Professionals only.**

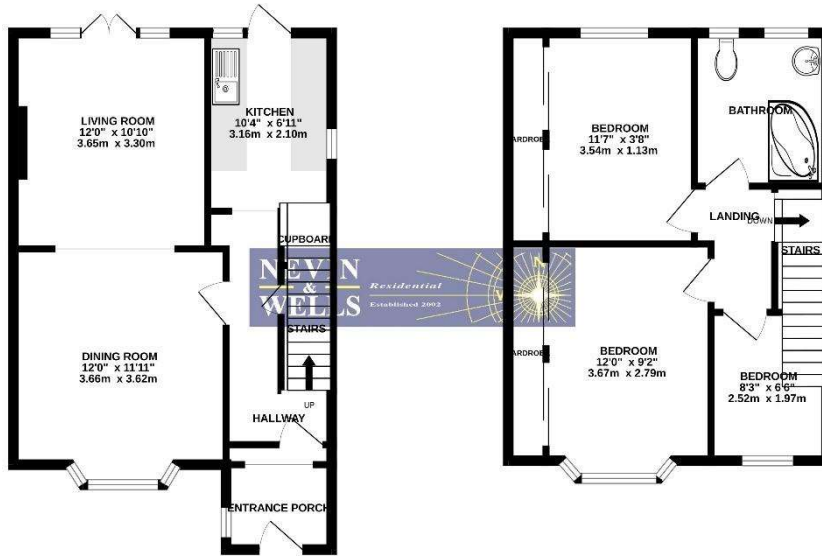
**AVAILABLE NOW - UNFURNISHED**

# Crown Street, Egham, Surrey, TW20 9BH

## FLOORPLAN

GROUND FLOOR  
457 sq.ft. (42.5 sq.m.) approx.

1ST FLOOR  
427 sq.ft. (39.7 sq.m.) approx.



TOTAL FLOOR AREA : 884 sq.ft. (82.2 sq.m.) approx.

While every attempt has been made to ensure the accuracy of the floorplan contained here, measurements of doors, windows, rooms and any other items are approximate and no responsibility is taken for any error, omission or misstatement. This plan is for illustrative purposes only and should be used as such by any prospective purchaser. The services, systems and appliances shown have not been tested and no guarantee is given to their operability or efficiency over time.  
Made with Metropix ©2023

## EPC

3, Crown Street EGHAM TW20 9BH	Energy rating <b>D</b>
Valid until 24 June 2027	Certificate number 8605-7575-4229-6027-3633

Property type: Semi-detached house  
Total floor area: 87 square metres

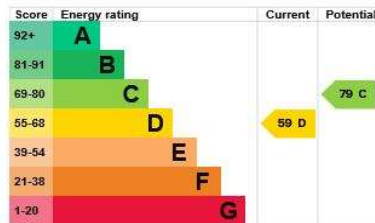
### Rules on letting this property

Properties can be let if they have an energy rating from A to E.  
You can read [guidance for landlords on the regulations and exemptions](#).

### Energy rating and score

This property's current energy rating is D. It has the potential to be C.

[See how to improve this property's energy efficiency.](#)



The graph shows this property's current and potential energy rating.

Properties get a rating from A (best) to G (worst) and a score. The better the rating and score, the lower your energy bills are likely to be.

For properties in England and Wales:

- the average energy rating is D
- the average energy score is 60

**COUNCIL TAX BAND: E - Runnymede Borough Council**