



# LANDMARK PINNACLE

CANARY WHARF E14



**THE PINNACLE CLUB**  
ELEVATE YOUR LIFESTYLE

Actual photography of 75<sup>th</sup> floor Sky Terrace

# THE UK'S TALLEST RESIDENTIAL TOWER



At 75 floors, Landmark Pinnacle is the UK's tallest residential building. Standing on the doorstep of Canary Wharf, this tower has breath-taking views of the capital from The Shard to the O2, Greenwich to the City.

A home at the Landmark Pinnacle includes access to five entire floors of truly spectacular amenities. From the UK's highest gym and private roof terrace, to tropical gardens and dining rooms. With unrivalled views from the 27th, 56th and 75th levels, each floor features distinct areas with far reaching Canary Wharf and City vistas.

Actual photography of 56<sup>th</sup> floor Residents' Lounge

## 5 FLOORS OF FANTASTIC AMENITIES

LEVEL  
75



The Sky Terraces. The largest and highest private roof terraces ever created in London and the UK.

LEVEL  
56



The UK's highest gym, spacious Club Lounge and virtual golf, private bars and dining rooms.

LEVEL  
27



The highest tropical gardens in the UK offering spectacular vistas over London and beyond.

LEVEL  
01



State-of-the-art residents' cinema and lounge.

LEVEL  
0



Spacious Residents' lobby and 24 Hour Concierge.

LEVEL  
75

SKY  
TERRACE  
CANARY WHARF VIEWS



Landmark Pinnacle's Sky Terrace is the highest private amenity space ever created in London. Here you can watch the ever changing sky whilst the triple-height glazing frames the views of London. This Sky Terrace overlooks Canary Wharf, The O2 and Greenwich. This is the perfect space to welcome a new day whilst enjoying the spectacular sunrise.

This one-of-a-kind space features the UK's highest living walls, including 13,000 plants selected to enhance the natural surroundings and the wellbeing of residents.

LEVEL  
75

SKY  
TERRACE  
CITY VIEWS



The City Sky Terrace is a fantastic space for socialising with family and friends whilst enjoying the unparalleled views of iconic London landmarks. Workout on the open air grass lawn or hold a picnic with friends before adjourning to the Sky Pod to catch the evening sunset over London.

Actual photography of 75<sup>th</sup> floor City Sky Terrace

# CANARY WHARF VIEW

LEVEL 75



# CITY VIEW

LEVEL 75



Actual photography of 75<sup>th</sup> floor Canary Wharf Sky Terrace



Actual photography of 75<sup>th</sup> floor City Sky Terrace

# LEVEL 75 AMENITIES

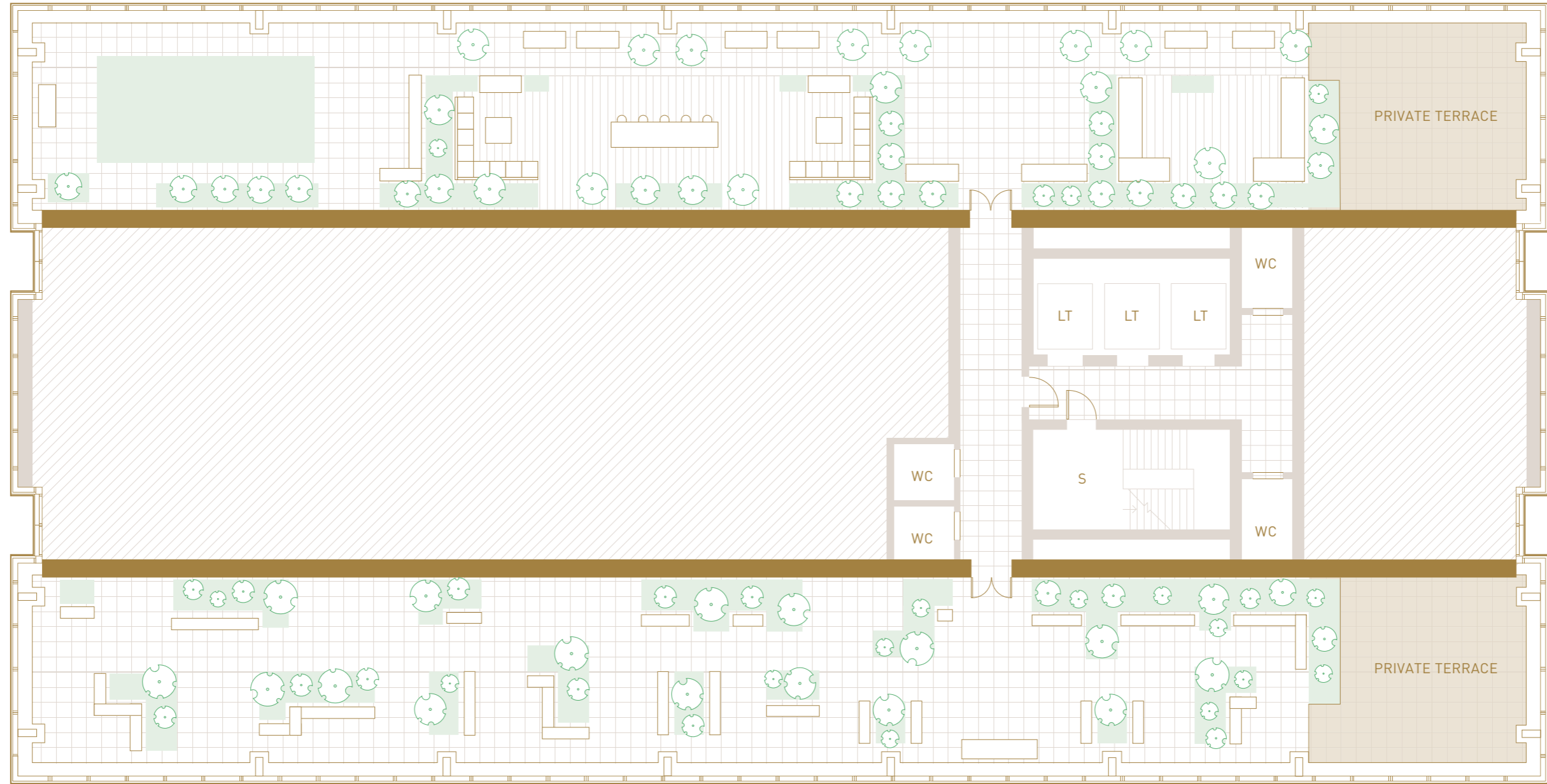


PANORAMA WEST: CITY OF LONDON / RIVER THAMES

PANORAMA WEST: CITY OF LONDON / RIVER THAMES

CITY (ROOF) TERRACE

CITY (ROOF) TERRACE

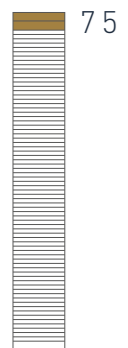


CANARY WHARF (ROOF) TERRACE

CANARY WHARF (ROOF) TERRACE

PANORAMA EAST: CANARY WHARF / SOUTH DOCK

PANORAMA EAST: CANARY WHARF / SOUTH DOCK



LT LIFT  
 S STAIRS  
 WC TOILET

Floor designs and layouts are indicative only and may change. The specification of the areas is the anticipated specification as at the date this brochure was prepared, but may be subject to change in accordance with permitted variances under the apartment sales contracts. All sales remain subject to contract. All information regarding prospective amenity provisions represents current intention only and the final provision of amenity may change in accordance with permitted variances under the apartment sales contracts. Please consult your sales contract for information.

LEVEL  
56

RESIDENTS'  
GYM  
CITY VIEWS



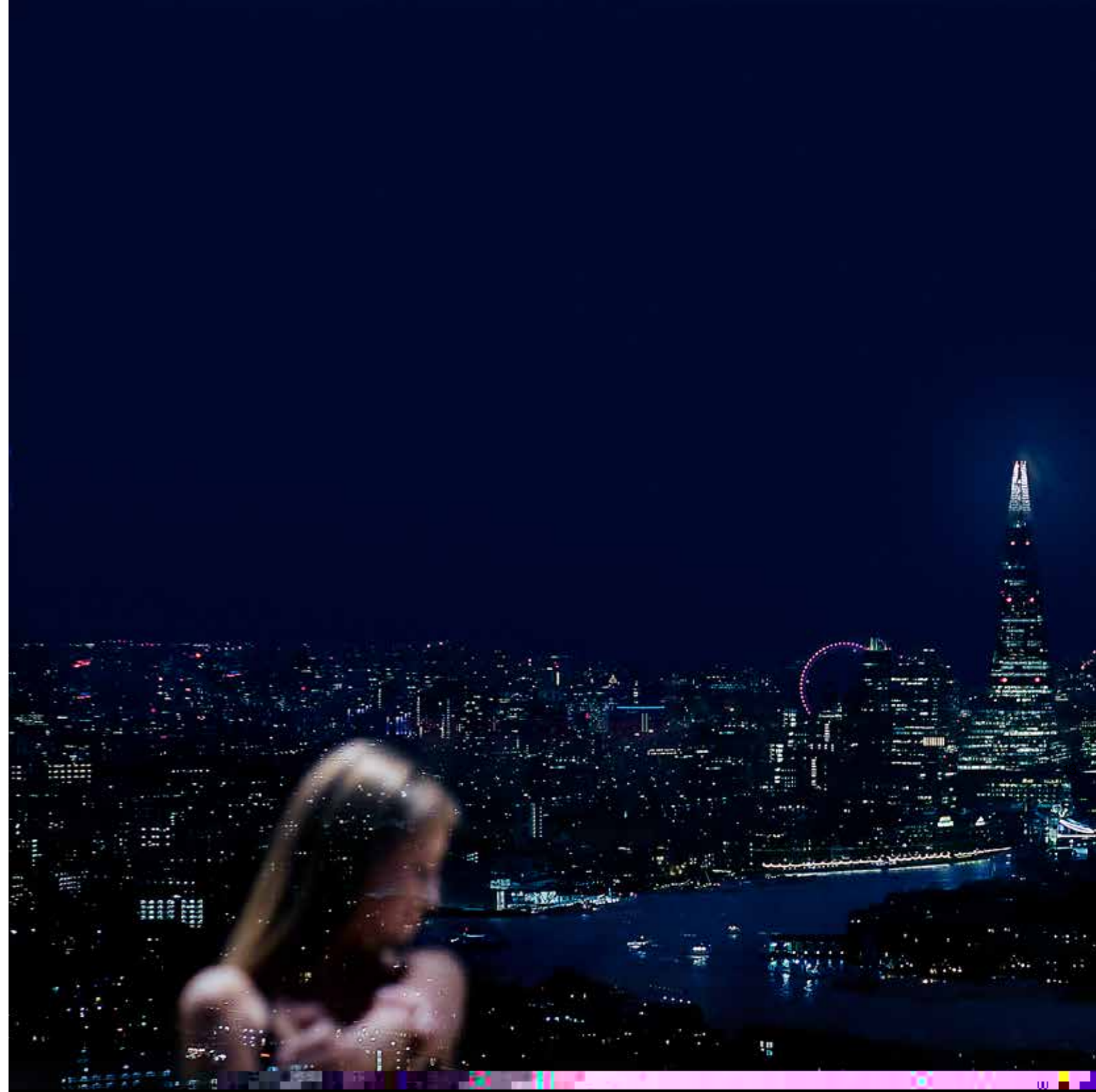
10

Elevate your workout the UK's highest residents' gym provides exceptional views of the city and beyond. The gym, managed by fitness and well-being leaders, features state-of-the-art Technogym equipment including cardio machines, free weights and a designated yoga and Pilates studio.

Actual photography of 56<sup>th</sup> floor Residents' Gym

# RESIDENTS' GYM

LEVEL 56 CITY VIEWS



Actual photography of 56<sup>th</sup> floor Residents' Gym



LEVEL  
56

RESIDENTS'  
CLUB LOUNGE  
CANARY WHARF VIEWS



14

15

Level 56 is devoted to entertainment, relaxation and dining. The games room, virtual golf, dining room, bar and sophisticated residents' club lounge all enjoy views looking over Canary Wharf and Greenwich.



Offering extraordinary views Canary Wharf of Canary Wharf, the Residents' Club Lounge is an inviting and spectacular space to enjoy. Perfect for quiet contemplation with a morning coffee or an evening with friends over a game of pool, retro arcade, table football or virtual golf.

## CLUB LOUNGE & VIRTUAL GOLF

LEVEL 56 CANARY WHARF VIEWS



LEVEL  
56

PRIVATE DINING  
ROOMS AND BARS  
CITY VIEWS



18

19

For more intimate affairs, Landmark Pinnacle offers residents the ability to reserve private dining rooms and bars. In addition to a perfect backdrop of exceptional views, these spectacular spaces feature restaurant quality kitchens for chefs to create memorable meals in the sky.

# PRIVATE BARS & DINING ROOMS

LEVEL 56 CANARY WHARF AND CITY VIEWS



20

Actual photography of 56<sup>th</sup> floor Residents' Bars and Dining Rooms



21



With two options overlooking both London and Canary Wharf, these dining and bar spaces are perfect for dinners, cocktail parties, and business meetings.

# LEVEL 56 AMENITIES



PANORAMA WEST: CITY OF LONDON / RIVER THAMES

PANORAMA WEST: CITY OF LONDON / RIVER THAMES

22

23



PANORAMA EAST: CANARY WHARF / SOUTH DOCK

PANORAMA EAST: CANARY WHARF / SOUTH DOCK



56

- LT(PR) LIFT (PINNACLE RESIDENCES)
- LT(R) LIFT (RESIDENCES)
- S STAIRS
- WC TOILET

Floor designs and layouts are indicative only and may change. The specification of the areas is the anticipated specification as at the date this brochure was prepared, but may be subject to change in accordance with permitted variances under the apartment sales contracts. All sales remain subject to contract. All information regarding prospective amenity provisions represents current intention only and the final provision of amenity may change in accordance with permitted variances under the apartment sales contracts. Please consult your sales contract for information.

LEVEL  
27

SKY  
GARDEN  
CANARY WHARF VIEWS



The 27th floor Sky Gardens are home to over 3,500 plants and are the highest tropical retreat in the UK. Immerse yourself in the spectacular indoor gardens embrace biophilia to ensure residents benefit from connecting with nature against a backdrop of London's iconic skylines. The Canary Wharf facing garden is a place for children to play with a sensory room, fun bridges through the planting and places to sit and relax.

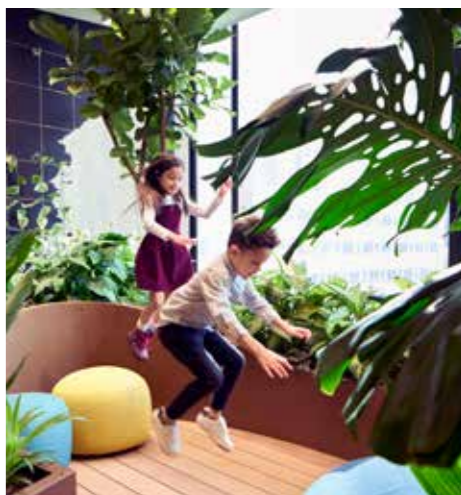
Actual photography of 27<sup>th</sup> floor Sky Garden

LEVEL 27

SKY GARDEN  
CANARY WHARF VIEWS



26



27



Actual photography of 27th floor Sky Garden

LEVEL  
27

# LONDON SQUARE GARDEN

CITY VIEWS



The London Square garden is perfect for meeting friends or just a place for quiet contemplation. Sofas, chairs and tables are surrounded by tropical plants which frame the iconic views of London. A table tennis room with the same superb views completes the offering of this space.

Actual photography of 27<sup>th</sup> floor London Square Garden



LEVEL  
27

LONDON SQUARE GARDEN  
AND TABLE TENNIS ROOM  
CITY VIEWS



30



31



Actual photography of 27<sup>th</sup> floor London Square Garden and Table Tennis room

# LEVEL 27 AMENITIES



PANORAMA WEST: CITY OF LONDON / RIVER THAMES

PANORAMA WEST: CITY OF LONDON / RIVER THAMES

TABLE TENNIS

LONDON SQUARE GARDEN

VIEWING TERRACE



SKY GARDEN

SKY GARDEN

PANORAMA EAST: CANARY WHARF / SOUTH DOCK

PANORAMA EAST: CANARY WHARF / SOUTH DOCK



27

- LT(PR) LIFT (PINNACLE RESIDENCES)
- LT(R) LIFT (RESIDENCES)
- S STAIRS
- WC TOILET

Floor designs and layouts are indicative only and may change. The specification of the areas is the anticipated specification as at the date this brochure was prepared, but may be subject to change in accordance with permitted variances under the apartment sales contracts. All sales remain subject to contract. All information regarding prospective amenity provisions represents current intention only and the final provision of amenity may change in accordance with permitted variances under the apartment sales contracts. Please consult your sales contract for information.

LEVEL  
01 PRIVATE  
CINEMA



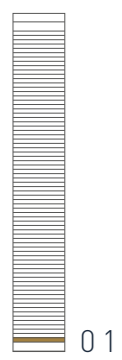
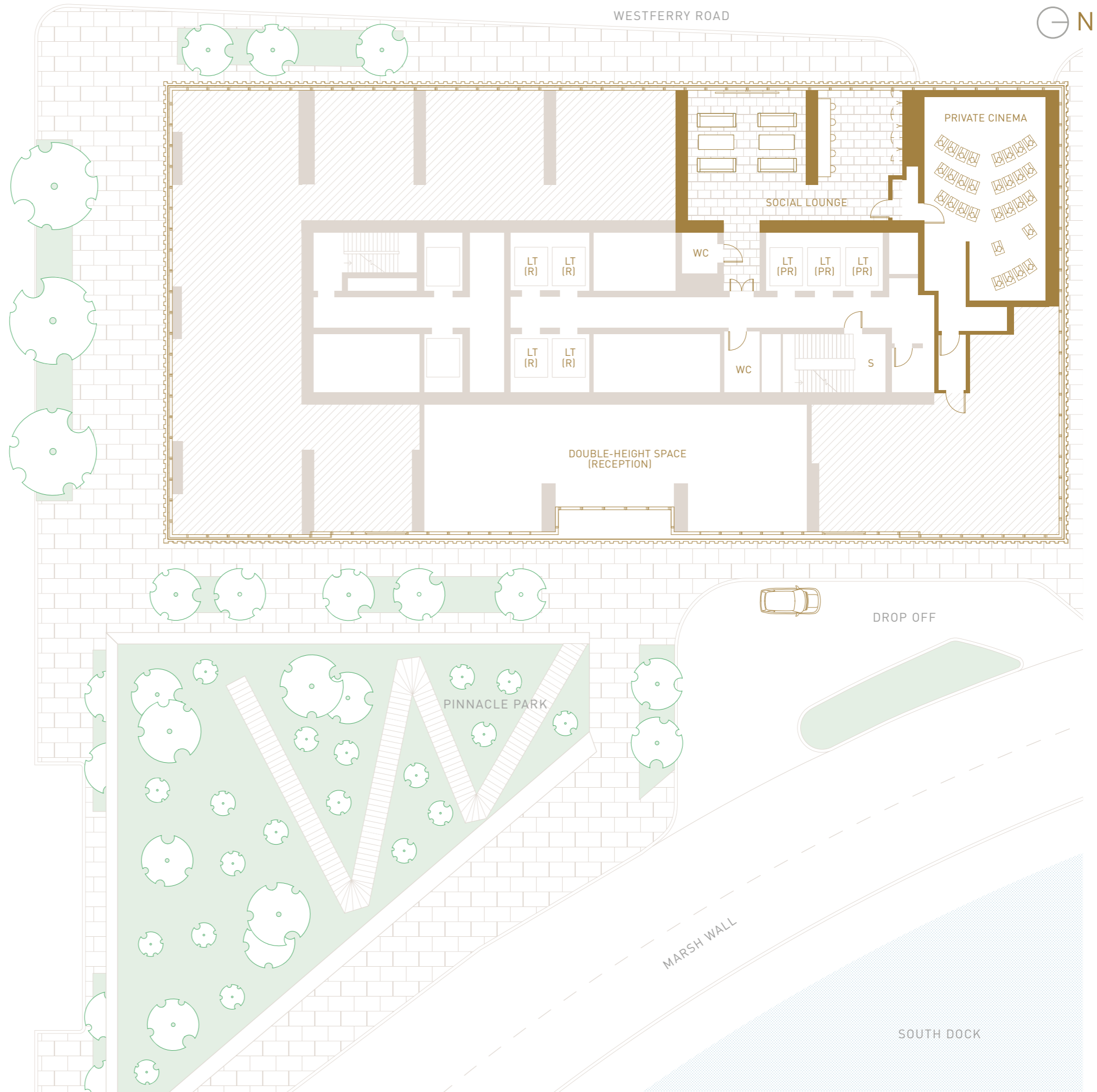
34

35

The private residents' cinema and lounge features state-of-the-art technology and is the perfect place to enjoy everything from the latest blockbusters to major sporting events.

CGI is indicative only.

# LEVEL 01 AMENITIES



- LT(PR) LIFT (PINNACLE RESIDENCES)
- LT(R) LIFT (RESIDENCES)
- S STAIRS
- WC TOILET

Floor designs and layouts are indicative only and may change. The specification of the areas is the anticipated specification as at the date this brochure was prepared, but may be subject to change in accordance with permitted variances under the apartment sales contracts. All sales remain subject to contract. All information regarding prospective amenity provisions represents current intention only and the final provision of amenity may change in accordance with permitted variances under the apartment sales contracts. Please consult your sales contract for information.

LEVEL 0

# 24-HOUR CONCIERGE



The ground floor is home to a 24-hour concierge service, with a spacious double-height lobby lounge, providing a lifestyle like no other. This is the perfect prelude to the unique suite of amenities and elegant residences of the Landmark Pinnacle.

Actual photography of the lobby.

# RESIDENTS' EVENTS



Residents at Landmark Pinnacle benefit from a vibrant social calendar of residents' events. Throughout the year, the extensive amenity spaces play host to live music, cocktail socials and cultural festivals. These provide a fantastic opportunity to meet other residents and enjoy the spaces together.



Actual photography of 27<sup>th</sup>, 56<sup>th</sup> & 75<sup>th</sup> floors



42

43

Actual photography of 75<sup>th</sup> floor City Sky Terrace



## CONTACT

**Marketing Suite** +44 (0)20 3905 6826  
 40 Landmark Square sales@landmarkpinnacle.com  
 London E14 9AB landmarkpinnacle.com



This brochure and the information contained in it does not form part of any contract, and while reasonable effort has been made to ensure accuracy, this cannot be guaranteed and no representation or warranty is made in that regard. Please note that these details are intended to give general indication and should be used as a guide only. Computer Generated Images and photographs, including photographs of views, are for indicative purposes only. Fixtures and furnishings, including furniture, wall panelling and wall dressings, shown in Computer Generated Images and photographs are not standard nor included in sales. Apartment designs and layouts are indicative only and may change. Areas defined as Amenity Areas (AA) are subject to planning otherwise they will revert to Winter Gardens (WG). The specification of the apartments is the anticipated specification as at the date this brochure was prepared, but may be subject to change in accordance with permitted variances under the apartment sale contracts. Computer Generated Images and photos are indicative only. All sales remain subject to contract. Please consult your sales contract for information. The property areas are calculated and presented in accordance with the RICS Code of Measuring Practice, 6th edition recommendation. These areas are indicative only of typical floor plans. Property areas of individual apartments/floors may change subject to structural column locations. Maps for illustration purposes only, not to scale. Disclaimer: Please be aware that these details are intended to give a general indication of properties available and should be used as a guide only. The company reserves the right to alter these details at any time. The contents herein shall not form any part of any contract or be a representation including such contract. These properties are offered subject to availability. Applicants are advised to contact the sales office or the appointed agents to ascertain the availability of any particular type of property so as to avoid a fruitless journey. The property areas are provided as gross internal areas under the RICS measuring practice 4th edition recommendation. Computer generated images are indicative only. Maps are for illustration purposes only and not to scale. Travel times taken from Google.co.uk/maps, tfl.gov.uk and nationalrail.co.uk. Prices and details correct at time of going to press. Planning application number is PA/12/03248 consented on the 10.10.2013 by Tower Hamlets Council. Through the purchase of a property at Landmark Pinnacle, the buyer is acquiring an apartment with a 999 year leasehold. Like any investment, purchasing uncompleted properties situated outside Hong Kong is complicated and contains risk. You should review all relevant information and documents carefully before making a purchase decision. If in doubt, please seek independent professional advice before making a purchase decision. The non-licensed agents engage in estate agency work exclusively in relation to properties outside Hong Kong and are not licensed to deal with any property situated in Hong Kong.

Actual photography of 75<sup>th</sup> floor Sky Terraces





CHALEGROVE PROPERTIES LIMITED