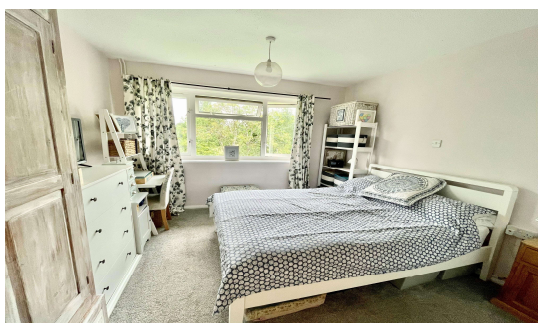




Field View, Egham, Surrey, TW20 8AT **£200,000 Leasehold**



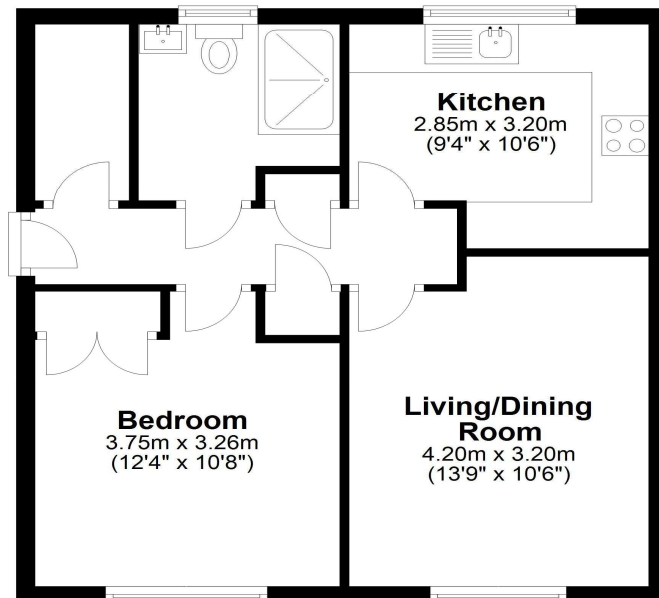
A superb example of a first floor one bedroom flat. The current owner has replaced the kitchen and bathroom and now offers light and airy accommodation. In addition there are fantastic views from the rear overlooking the local park and this block is tucked away in a lovely quiet cul-de-sac, close to local shops and ten minutes from Egham High Street.

Field View, Egham, Surrey, TW20 8AT

FLOOR PLAN

First Floor

Approx. 46.9 sq. metres (504.7 sq. feet)



Total area: approx. 46.9 sq. metres (504.7 sq. feet)

All measurements are approximate. Nevin & Wells Residential have not tested any systems or appliances.

EPC

13 Field View EGHAM TW20 8AT	Energy rating C
Valid until 24 July 2034	Certificate number 2159-3040-6203-9034-3200

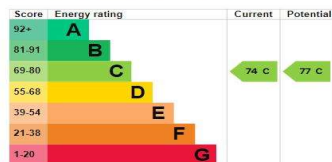
Property type: Top-floor flat
Total floor area: 47 square metres

Rules on letting this property

Properties can be let if they have an energy rating from A to E.
You can read [guidance for landlords on the regulations and exemptions](#).

Energy rating and score

This property's energy rating is C. It has the potential to be C.
[See how to improve this property's energy efficiency.](#)



The graph shows this property's current and potential energy rating.

COUNCIL TAX BAND:

GROUND RENT:

SERVICE CHARGES:

LEASE:

VIEWINGS:

D - Runnymede Borough Council

T.B.C

£378.54 (Awaiting written confirmation)

125 Years from 2019 (Awaiting written confirmation)



By appointment with the clients selling agents, Nevin & Wells Residential on 01784 437 437 or visit www.nevinandwells.co.uk