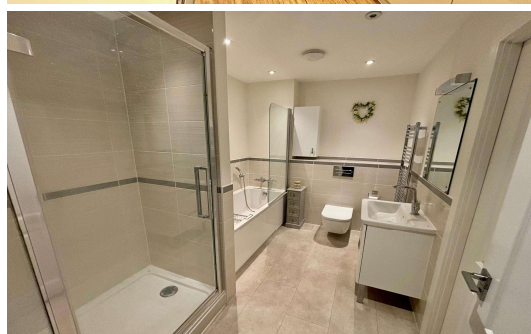
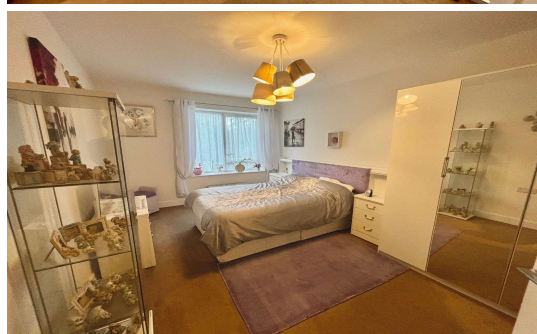
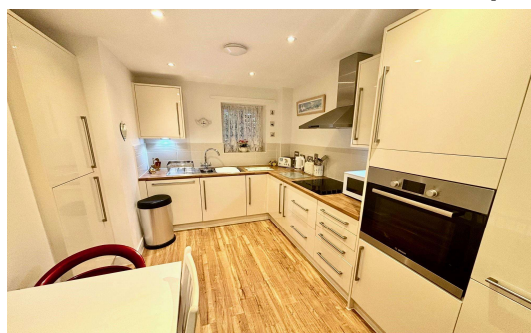
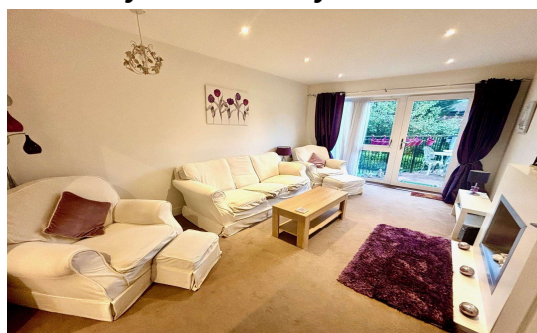




The Hythe, Pooley Green Road, TW20 8AL

£146,250 L/H



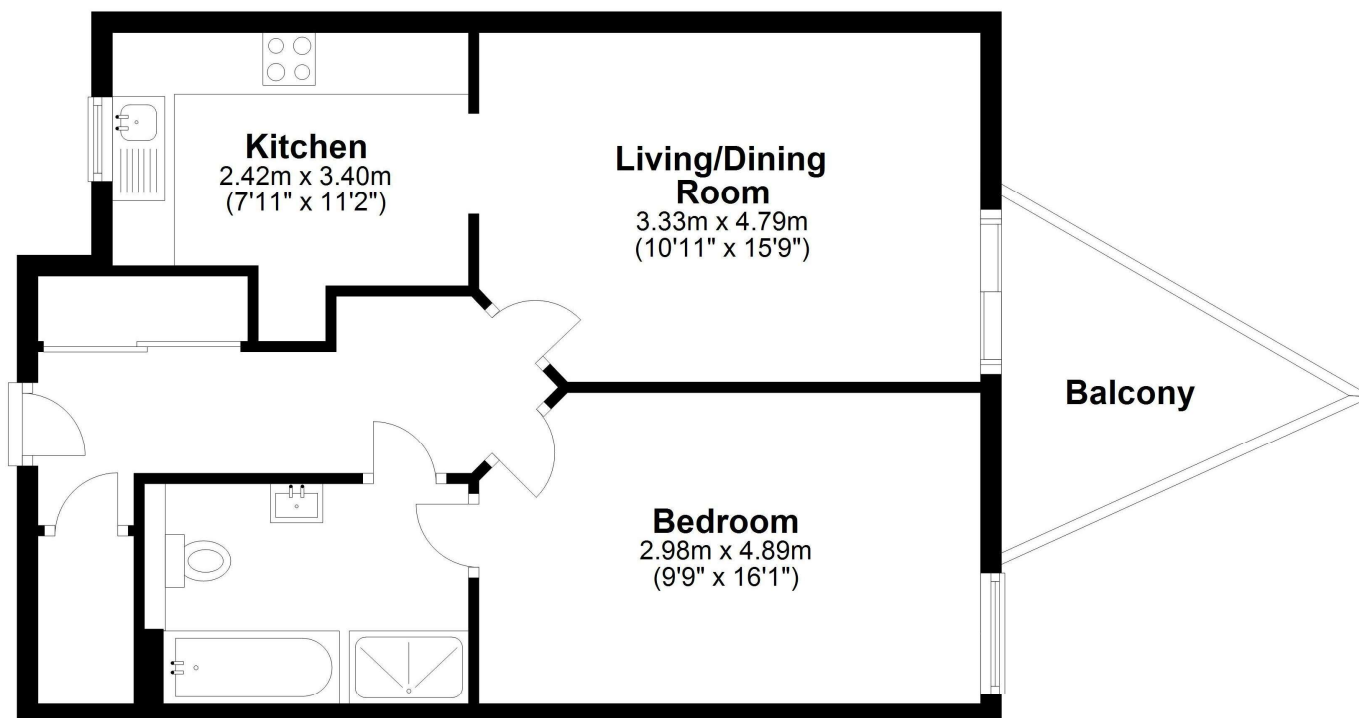
A stunning 'downsizer' first floor apartment for the over 55's. Finished to high specification. Offering one double bedroom, integrated fitted kitchen, Jack and Jill luxury bathroom suite, living/dining room and balcony. There is also residents parking via electronic gates and mature communal grounds. Egham mainline train station, Magna Square and High Street amenities are just a ten minute walk away. No onward chain. **Purchase is 75% of property only.**

The Hythe, Pooley Green Road, Egham, Surrey, TW20 8AL

FLOOR PLAN

First Floor

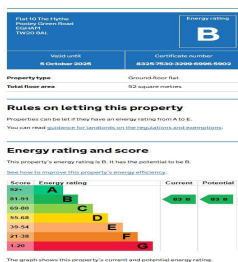
Approx. 56.0 sq. metres (603.1 sq. feet)



Total area: approx. 56.0 sq. metres (603.1 sq. feet)

All measurements are approximate. Nevin & Wells Residential have not tested any systems or appliances.

EPC



COUNCIL TAX BAND:

C - Runnymede Borough Council

SERVICE CHARGE:

Approximately £2000 per annum, including ground rent and buildings insurance. (awaiting written confirmation)

LEASE:

993 years unexpired. (awaiting written confirmation).

VIEWINGS:

By appointment with the clients selling agents, Nevin & Wells Residential on 01784 437 437 or visit www.nevinandwells.co.uk