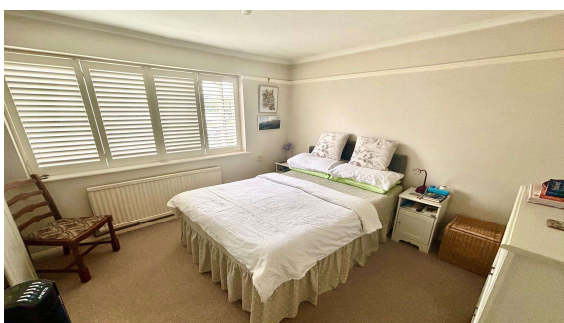


**Peket Close, Staine-upon-Thames, TW18 3LZ**

**£375,000 F/H**



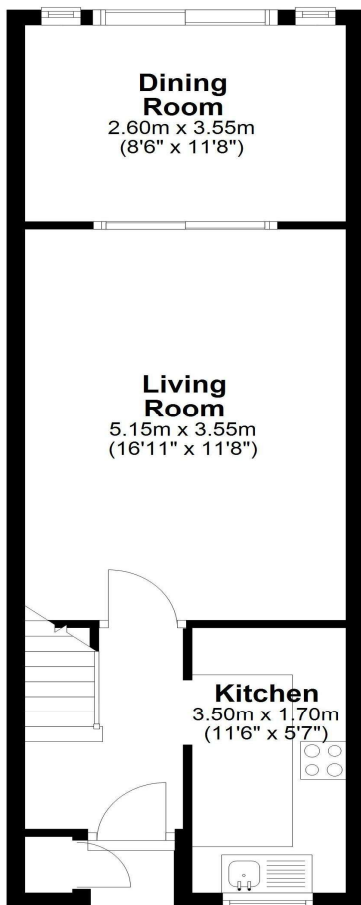
A very well presented modern two bedroom terrace property located in a quiet cul-de-sac. This property benefits from having a garage, entrance hallway, kitchen, lounge, conservatory, first floor bathrooms and a private rear garden. Further benefits include double glazing throughout and gas central heating.

**Peket Close, Staines-upon-Thames, Middlesex, TW18 3LZ**

**FLOOR PLAN**

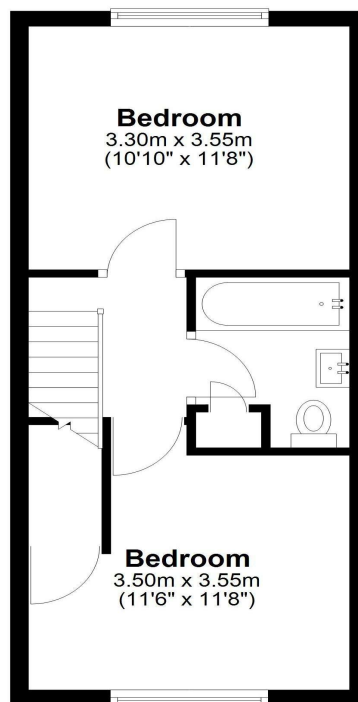
**Ground Floor**

Approx. 39.5 sq. metres (425.4 sq. feet)



**First Floor**

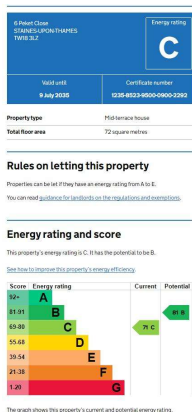
Approx. 31.4 sq. metres (337.6 sq. feet)



Total area: approx. 70.9 sq. metres (763.0 sq. feet)

All measurements are approximate. Nevin & Wells Residential have not tested any systems or appliances.

**AWAITING EPC**



**COUNCIL TAX BAND: D** - Runnymede Borough Council

**VIEWINGS:**

By appointment with the clients selling agents,  
Nevin & Wells Residential on 01784 437 437 or  
visit [www.nevinandwells.co.uk](http://www.nevinandwells.co.uk)

