



**Victoria Mews, Englefield Green, TW20 0BF**

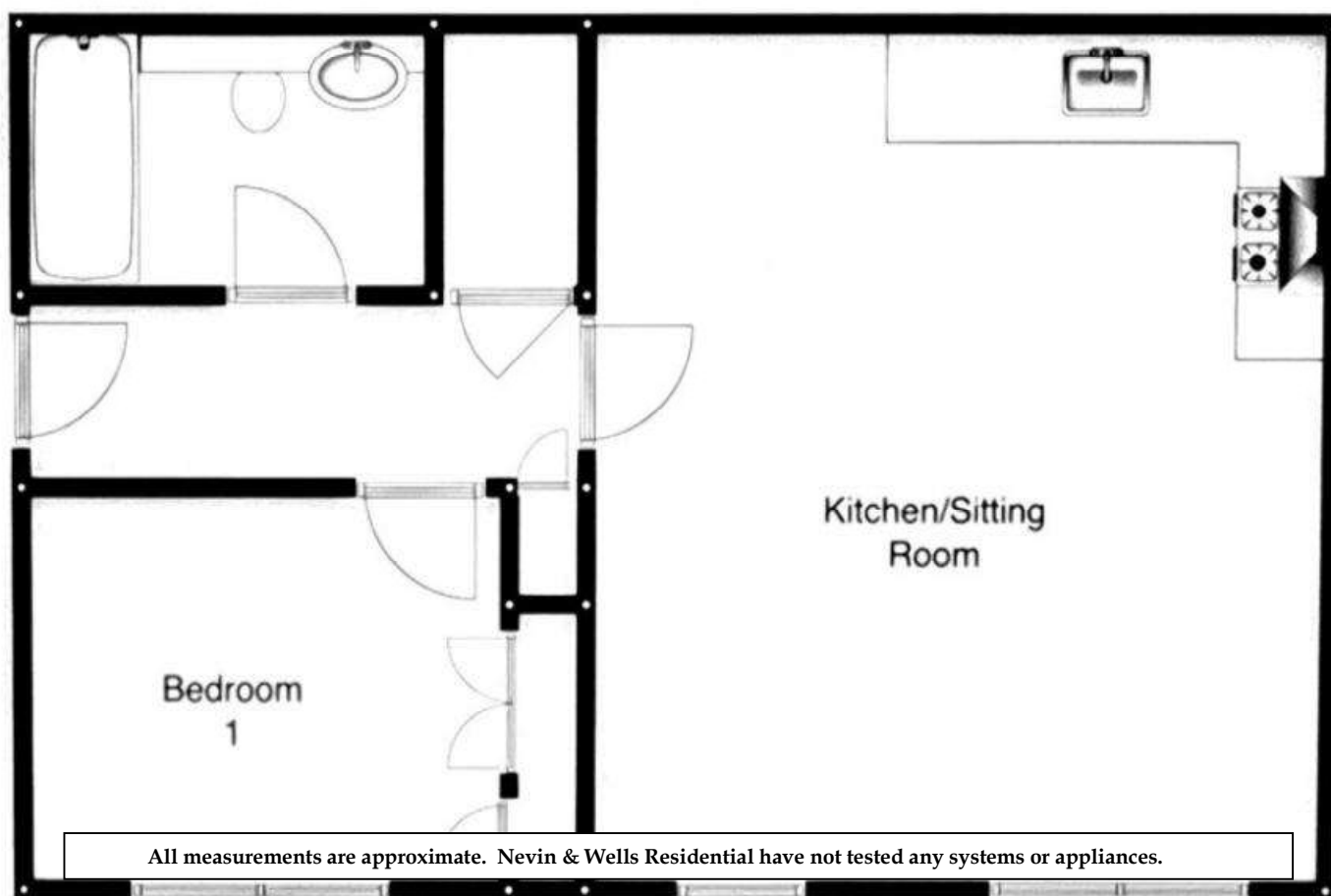
**£269,950 L/H**



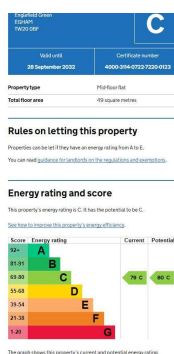
An excellent opportunity to acquire this well presented, first floor apartment with allocated parking. Situated within walking distance of Village shops, Royal Holloway University, the Village Green and public transport facilities. Accommodation comprises entrance hallway, open plan kitchen/living area, double bedroom and bathroom. No onward chain.

Victoria Mews Englefield Green, Surrey, TW20 0F

FLOOR PLAN



EPC



COUNCIL TAX BAND:

C - Runnymede Borough Council

LEASE:

105 years remaining ( awaiting written confirmation)

SERVICE CHARGE:

£300 per annum (awaiting written confirmation)

MAINTENANCE:

approx. £1000 per annum (awaiting written confirmation)

VIEWINGS:

By appointment with the clients selling agents,  
Nevin & Wells Residential on 01784 437 437 or  
visit [www.nevinandwells.co.uk](http://www.nevinandwells.co.uk)

