

NEVIN & WELLS

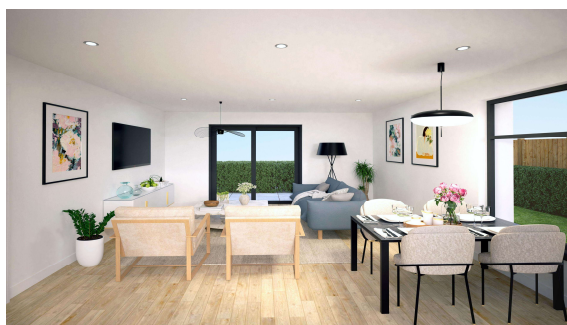
Residential

Established 2002



North Street, Egham, TW20 9RP

Prices from £275,000 L/H



An exclusive development of seven luxury apartments situated in the heart of Egham town centre just yards from mainline train station, Magna Square and recreational playing fields. Parking available. For further information, please contact Sole Agents Nevin and Wells.

169/170 High Street, Egham, Surrey, TW20 9EJ
Tel. 01784 437 437 Fax. 01784 436 456
www.nevinandwells.co.uk

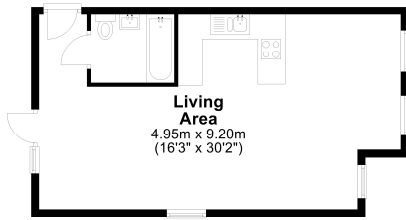


North Street, Egham, Surrey, TW20 9RP

FLOOR PLAN

Flat 1

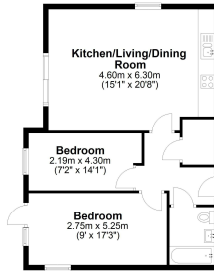
Approx. 46.4 sq. metres (499.0 sq. feet)



Total area: approx. 46.4 sq. metres (499.0 sq. feet)

Flat 2

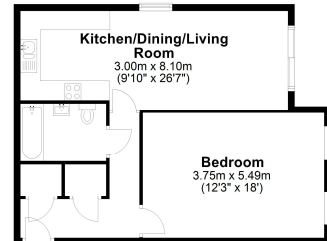
Approx. 65.1 sq. metres (700.8 sq. feet)



Total area: approx. 65.1 sq. metres (700.8 sq. feet)

Flat 3

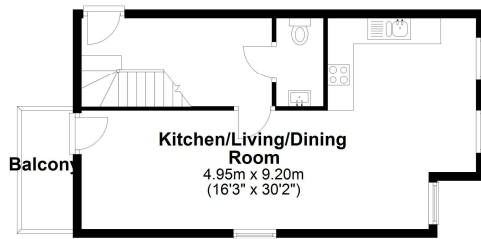
Approx. 59.5 sq. metres (640.6 sq. feet)



To

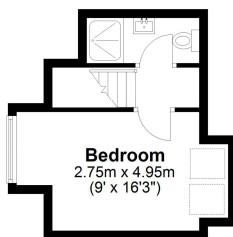
Flat 4

Approx. 44.1 sq. metres (474.2 sq. feet)



First Floor

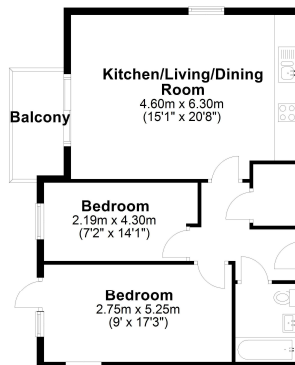
Approx. 18.5 sq. metres (198.6 sq. feet)



Total area: approx. 62.5 sq. metres (672.8 sq. feet)

Flat 5

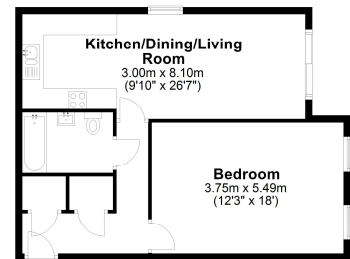
Approx. 65.1 sq. metres (700.8 sq. feet)



total area: approx. 65.1 sq. metres (700.8 sq. feet)

Flat 6

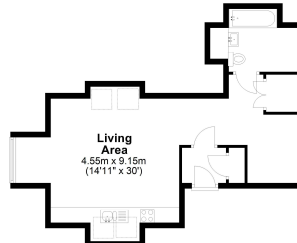
Approx. 59.5 sq. metres (640.6 sq. feet)



Total area: approx. 59.5 sq. metres (640.6 sq. feet)

Flat 7

Approx. 47.9 sq. metres (515.6 sq. feet)



Total area: approx. 47.9 sq. metres (515.6 sq. feet)

All measurements are approximate. Nevin & Wells Residential have not tested any systems or appliances.

AWAITING EPC

VIEWINGS:

By appointment with the clients selling agents,
Nevin & Wells Residential on 01784 437 437 or
visit www.nevinandwells.co.uk

