



Vegal Crescent, Englefield Green, TW20 0QF

£425,000 F/H



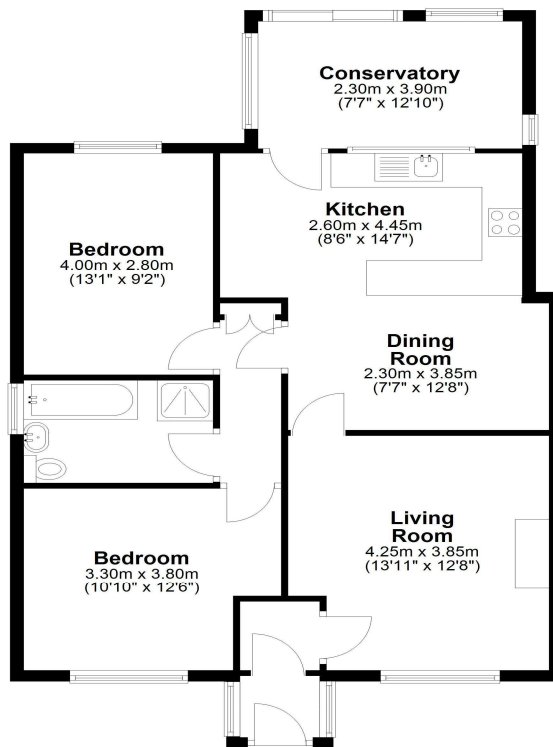
An extended two bedroom semi detached bungalow, situated close to shops, Windsor Great Park and the local Village Green. The property itself is in need of some modernisation and offers huge potential with an amazing large rear garden, parking to front as well as a conservatory. Being sold with vacant possession.

Vegal Crescent, Englefield Green, Surrey, TW20 0QF

FLOOR PLAN

Ground Floor

Approx. 82.2 sq. metres (884.5 sq. feet)



Total area: approx. 82.2 sq. metres (884.5 sq. feet)

All measurements are approximate. Nevin & Wells Residential have not tested any systems or appliances.

EPC

46 Vegal Crescent Englefield Green Surrey TW20 0QF		Energy rating D
Valid until 24 July 2035	Certificate number 2557-3053-4203-1095-0200	

Property type	Semi-detached bungalow
Total floor area	71 square metres

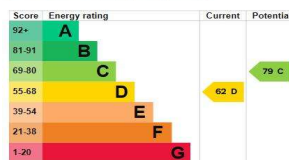
Rules on letting this property

Properties can be let if they have an energy rating from A to E.
You can read [guidance for landlords on the regulations and exemptions](#).

Energy rating and score

This property's energy rating is D. It has the potential to be C.

[See how to improve this property's energy efficiency.](#)



The graph shows this property's current and potential energy rating.

COUNCIL TAX BAND:

D - Runnymede Borough Council

VIEWINGS:

**By appointment with the clients selling agents,
Nevin & Wells Residential on 01784 437 437 or
visit www.nevinandwells.co.uk**

