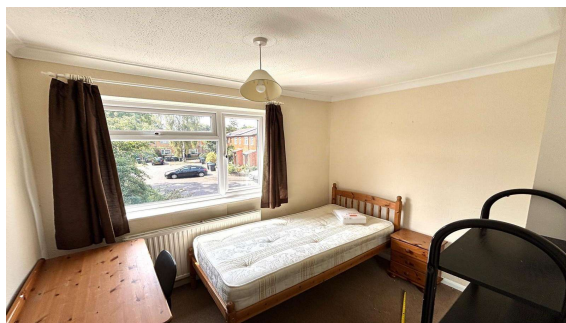
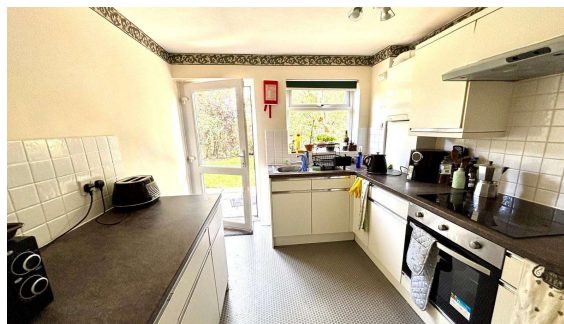
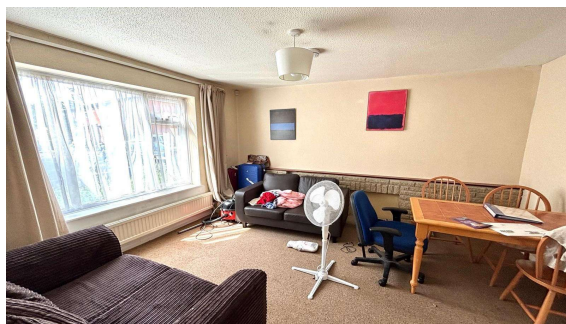


Notley End, Englefield Green, TW20 0RE

£375,000 F/H



INVESTMENT BUYERS ONLY!

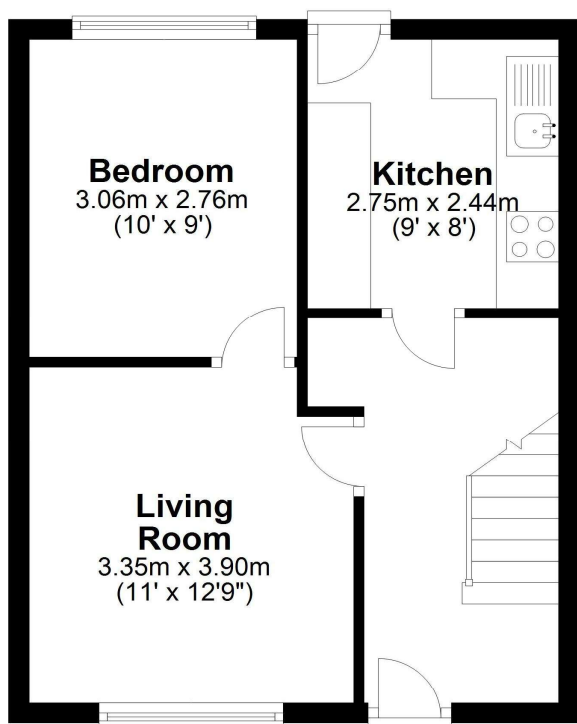
Currently as a four bedroom student rental property for £2,355pcm offering a minimum yield of 7.5% for the academic year of 2025/2026 from 9 August 2025. Being sold as one of a portfolio of five, at an asking price of £2,225,000 for those wishing to buy the whole portfolio, which all have tenants.

Notley End, Englefield Green, Surrey, TW20 0RE

FLOOR PLAN

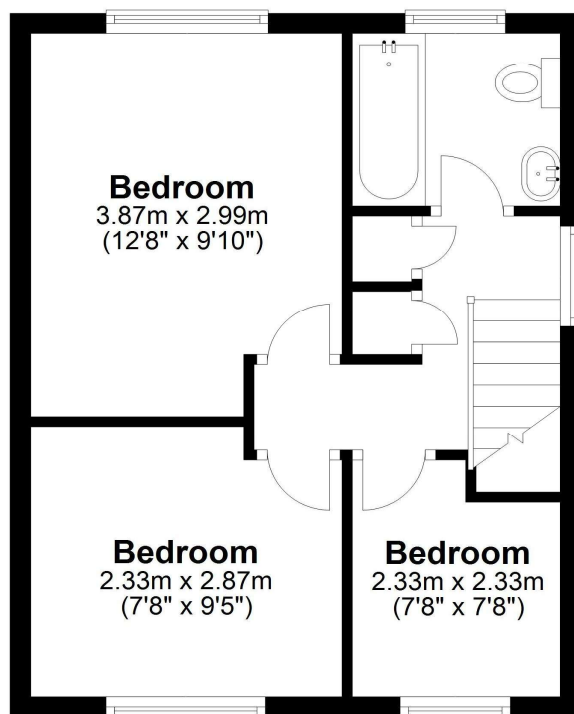
Ground Floor

Approx. 33.7 sq. metres (362.3 sq. feet)



First Floor

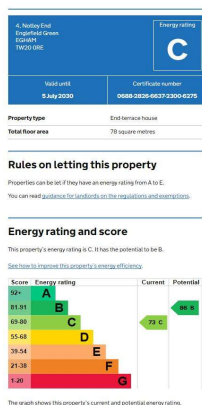
Approx. 33.7 sq. metres (362.3 sq. feet)



Total area: approx. 67.3 sq. metres (724.5 sq. feet)

All measurements are approximate. Nevin & Wells Residential have not tested any systems or appliances.

EPC



COUNCIL TAX BAND:

D - Runnymede Borough Council

VIEWINGS:

**By appointment with the clients selling agents,
Nevin & Wells Residential on 01784 437 437 or
visit www.nevinandwells.co.uk**

