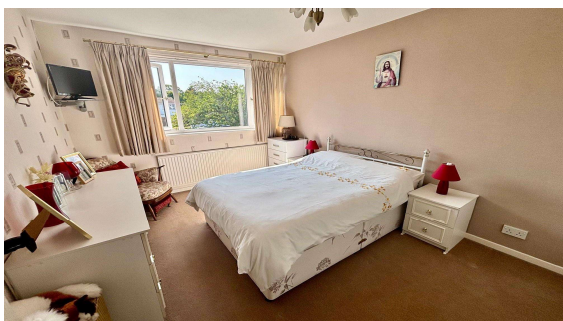
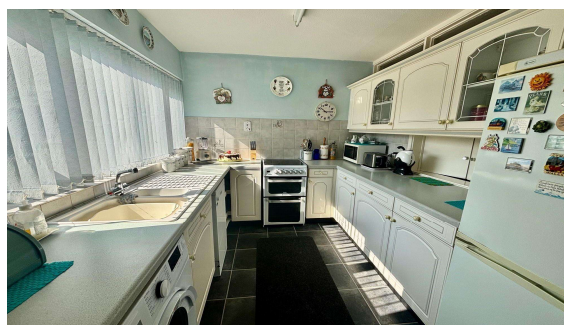
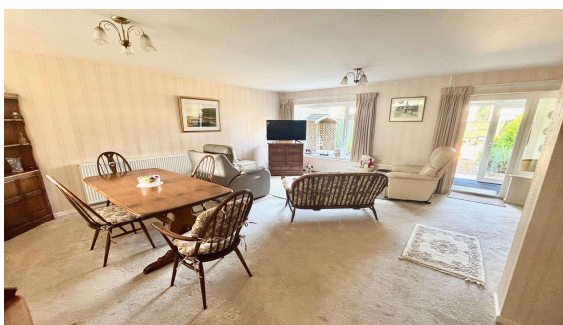




The Gower, Thorpe, Surrey, TW20 8UD

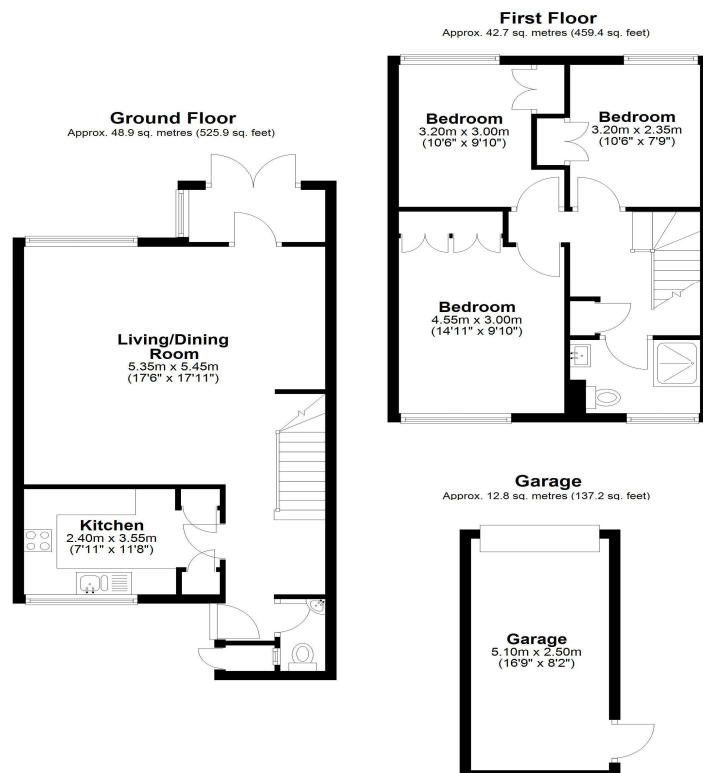
£450,000 F/H



Located in the heart of the Historic village of Thorpe is this extended three bedroom end terrace property with garage and own driveway providing off street parking for two vehicles. Situated with in a quiet residential cul-de-sac. Accommodation comprises entry hallway, downstairs WC, kitchen, lounge/dining room. First floor shower room and private rear garden. No onward chain.

The Gower, Thorpe, Surrey, TW20 8UD

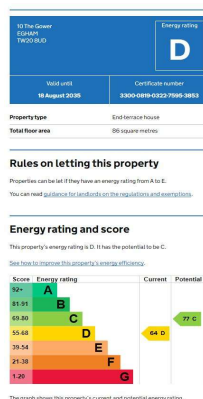
FLOOR PLAN



Total area: approx. 104.3 sq. metres (1122.6 sq. feet)

All measurements are approximate. Nevin & Wells Residential have not tested any systems or appliances.

EPC



COUNCIL TAX BAND:

D - Runnymede Borough Council

VIEWINGS:

By appointment with the clients selling agents,
Nevin & Wells Residential on 01784 437 437 or
visit www.nevinandwells.co.uk

