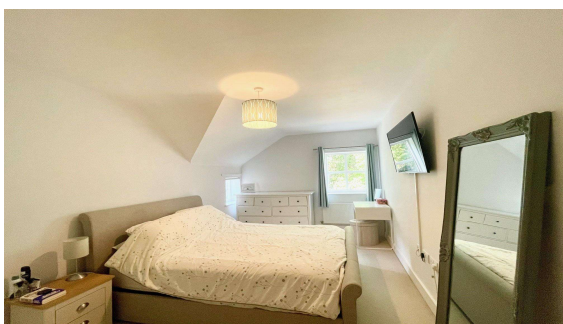
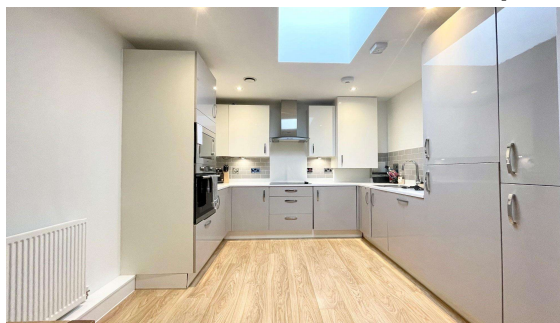
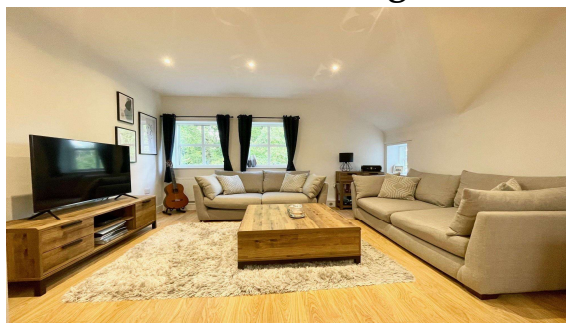




Great Charta Close, Englefield Green, TW20 0GL

£285,000 L/H

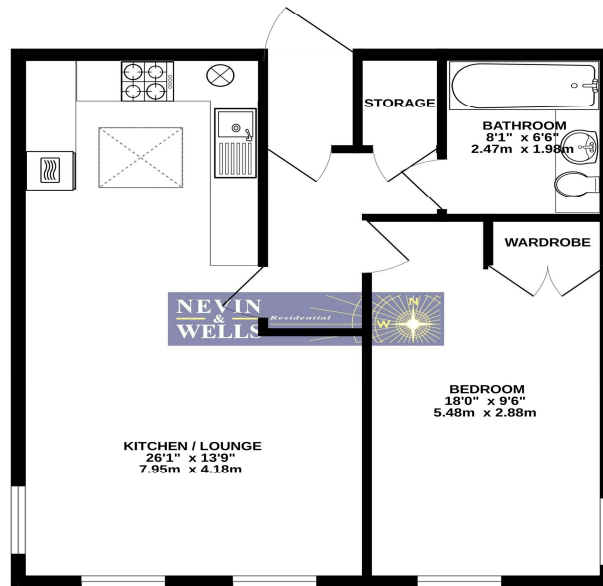


Penthouse Living in the Heart of Englefield Green. Welcome to your elevated escape in the prestigious Great Charta Close development. This stunning one-bedroom apartment offers a sleek, open-plan living and kitchen area, flooded with natural light and finished with modern design touches throughout. The spacious double bedroom features built-in wardrobes, and the bathroom boasts a contemporary suite with a shower-over-bath. Nestled in this charming village, you're surrounded by the beauty of Windsor Great Park, local pubs and excellent transport links. Whether you're a professional seeking a peaceful retreat or an investor looking for a prime rental opportunity, this penthouse delivers on every front.

Great Charta Close, Englefield Green, Surrey, TW20 0GL

FLOOR PLAN

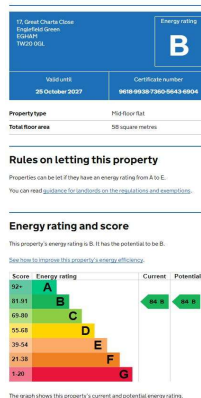
GROUND FLOOR
604 sq.ft. (56.2 sq.m.) approx.



TOTAL FLOOR AREA : 604 sq.ft. (56.2 sq.m.) approx.
Whilst every attempt has been made to ensure the accuracy of the floorplans contained here, measurements of doors, windows, rooms and any other items are approximate and no responsibility is taken for any error, omission or mis-statement. This plan is for illustrative purposes only and should be used as such by any prospective purchaser. The services, systems and appliances shown have not been tested and no guarantee as to their operability or efficiency can be given.
Made with Memphis 12/2020

All measurements are approximate. Nevin & Wells Residential have not tested any systems or appliances.

EPC



COUNCIL TAX BAND:

LEASE:

GROUND RENT:

SERVICE CHARGE:

VIEWINGS:

C - Runnymede Borough Council

125 Years from April 2018

£184 per annum

£136.80 per month

By appointment with the clients selling agents,
Nevin & Wells Residential on 01784 437 437 or
visit www.nevinandwells.co.uk

