



Laleham Road, Staines, TW18 2QF

£250,000 L/H

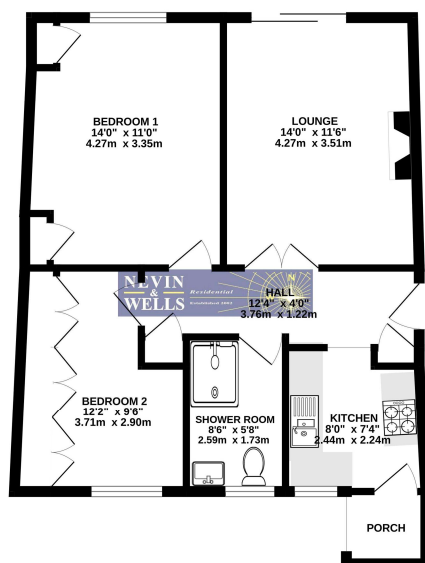


A spacious ground floor apartment, situated in a 1930's built development within two acre mature river view gardens. Benefits include two double bedrooms, lounge onto private terrace, modern kitchen and bathroom, gas central heating and double glazing. Access to Staines station, new leisure centre and High Street is a ten minute walk away. This is a chain free property in need of modernisation.

Laleham Road, Staines-upon-Thames, Middlesex, TW18 2QF

FLOOR PLAN

GROUND FLOOR
568 sq.ft. (52.8 sq.m.) approx.

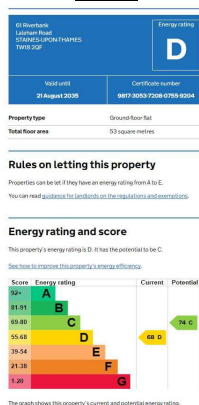


TOTAL FLOOR AREA: 568 sq.ft. (52.8 sq.m.) approx.

Whilst every attempt has been made to ensure the accuracy of the floorplan contained herein, measurements of floors, walls, doors and any other items are approximate and no responsibility is taken for any error, omission or misstatement. This plan is for illustrative purposes only and should be used as such by any prospective purchaser. The services, systems and appliances shown have not been tested and no guarantee as to their operability or efficiency can be given. Made with Metronix (2025)

All measurements are approximate. Nevin & Wells Residential have not tested any systems or appliances.

EPC



COUNCIL TAX BAND:

LEASE:

GROUND RENT:

SERVICE CHARGE:

VIEWINGS:

C - Spelthorne Borough Council

133 years unexpired

£10.00 per annum

£1,178.00 per annum.

By appointment with the clients selling agents,
Nevin & Wells Residential on 01784 437 437 or
visit www.nevinandwells.co.uk

