



£415,950

3 Bedroom Detached Bungalow for sale

Plot 163, The Milton at Molbrook, 1 Molbrook Road EX36, South Molton



EweMove
SALES AND LETTINGS



Overview

ANTICIPATED COMPLETION BETWEEN SEPTEMBER & NOVEMBER 2026

Presented to the market is 'The Milton', an outstanding three-bedroom detached dormer bungalow in the heart of South Molton and designed for flexible family living. Spanning 1,154 square feet, this remarkable new build boasts an all-inclusive, high-specification finish throughout, offering both practicality and contemporary style for a discerning buyer.

IMAGES USED FOR MARKETING ARE STAGED FOR THE BUYERS CONVENIENCE



Key Features

- 3 BEDROOM DORMER BUNGALOW
- WAIN HOMES BUILT
- ALL INCLUSIVE SPECIFICATION
- EN-SUITE TO MASTER BEDROOM
- 10 YEAR NHBC WARRANTY
- SOLAR PANELS
- DETACHED GARAGE



Nestled in the heart of South Molton, this remarkable three-bedroom detached dormer bungalow-The Milton-offers modern living at its finest. Boasting a spacious 1,154 sq ft interior, it delivers the perfect blend of thoughtful design and practical features for growing families, professional couples, and downsizers alike.

This impressive new build benefits from an all-inclusive specification and comes with a reassuring 10-year NHBC warranty for complete peace of mind. Step through the front door and you'll instantly feel at home: the master bedroom is located on the ground floor, featuring a stylish en-suite that ensures privacy and comfort. Continuing along the hallway, discover a contemporary, generously sized kitchen that flows seamlessly onto the garden via elegant French doors, creating a wonderfully light-filled space for both daily life and entertaining. The separate lounge also opens onto the garden through an additional set of French doors-tailor-made for those relaxing summer evenings or family gatherings.

Further enhancing the ground floor, an inviting dining room and a convenient W/C are perfectly positioned next to the staircase. Upstairs, you will find two more double bedrooms and a chic family bathroom-ideal for accommodating family and guests.

Outside, there's no need to worry about parking as this home features both a garage and a private driveway, providing ample parking and storage options.

South Molton itself is renowned for its vibrant community atmosphere, with a wealth of independent shops, bustling weekly markets, and a tempting selection of traditional pubs all only moments from your doorstep. Excellent local schools are within easy reach, making this home a very attractive option for families. The excellent transport links via Station Road provide seamless connectivity across Devon, while the enchanting countryside and world-renowned Exmoor National Park lie just minutes away, presenting endless opportunities for scenic walks, cycling, and leisurely family days out.

With an anticipated completion between September and November 2026, this exceptional property provides the ultimate in flexible, future-proof living. Early viewing highly recommended-arrange your tour today to experience all that The Milton in South Molton has to offer.



Rooms

Lounge - 4,410.0mm x 3,650.0mm - 14' 6" x 12'

Kitchen - 3,920.0mm x 3,025.0mm - 12' 10" x 9' 11"

Dining - 3,060.0mm x 2,720.0mm - 10' x 8' 11"

Bedroom 1 - 3,410.0mm x 3,395.0mm - 11' 2" x 11' 2"

En-Suite - 2,597.0mm x 1,000.0mm - 8' 6" x 3' 3"

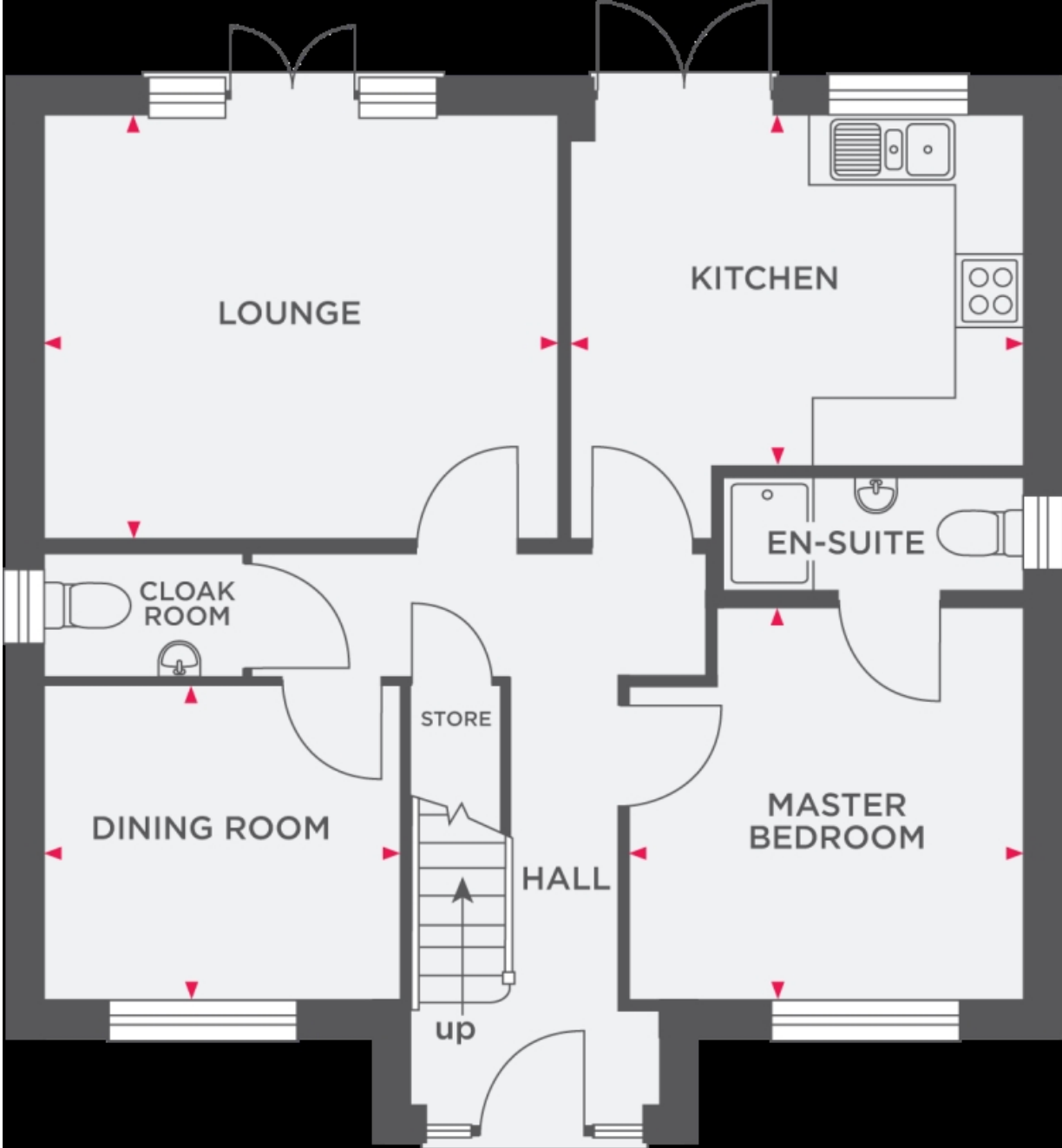
Cloakroom 997.0mm x 2,607.0mm - 3' 3" x 8' 7"

Bedroom 2 - 3,085.0mm x 4,330.0mm - 10' 1" x 14' 2"

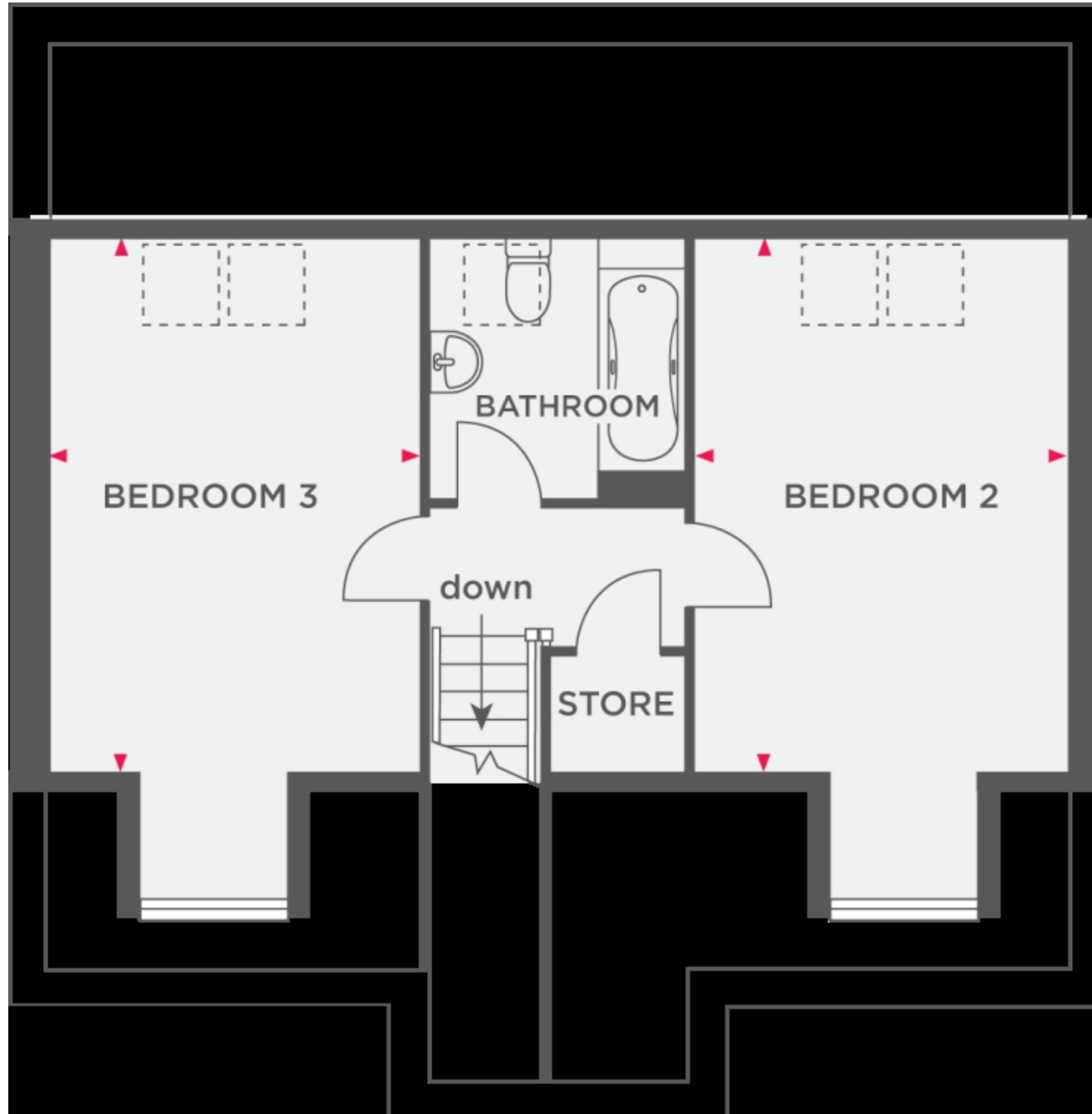
Bedroom 3 - 3,060.0mm x 4,330.0mm - 10' x 14' 2"

Bathroom - 2,125.0mm x 2,144.0mm - 7' x 7'

Floorplans



Floorplans



EPC

The EPC will be available within 28 days or the property may be exempt, please speak to us for more details.



Marketed by Ewemove South Molton

01769 611 444 (24/7)
southmolton@ewemove.com



EweMove
SALES AND LETTINGS