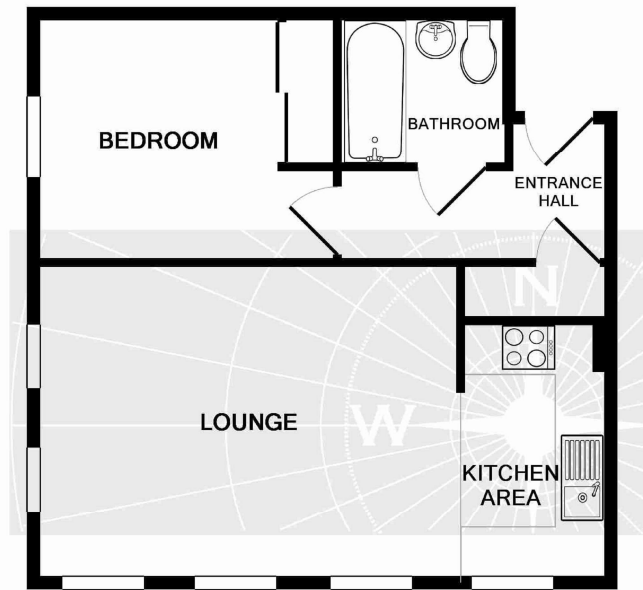


A superbly presented one bedroom ground floor apartment, built to a high specification. This spacious property benefits from fully fitted kitchen with built in appliances, oak effect flooring, luxury white bathroom with shower, full double glazing, gas central heating and allocated parking space. Access to local shops and Royal Holloway University is within five minutes' walk.

AVAILABLE 5TH APRIL 2022

Harvest Road, Englefield Green, Surrey, TW20 0SG

FLOOR PLAN



TOTAL APPROX. FLOOR AREA 428 SQ.FT. (39.8 SQ.M.)

Whilst every attempt has been made to ensure the accuracy of the floor plan contained here, measurements of doors, windows, rooms and any other items are approximate and no responsibility is taken for any error, omission, or mis-statement. This plan is for illustrative purposes only and should be used as such by any prospective purchaser. The services, systems and appliances shown have not been tested and no guarantee as to their operability or efficiency can be given
 Made with Metropix ©2011

All measurements are approximate. Nevin and Wells Residential have not tested any systems or appliances.

EPC

Flat 3 Arista Court 88, Harvest Road Englefield Green EGHAM TW20 0SG	Energy rating <div style="font-size: 2em; font-weight: bold; color: white; background-color: #0056b3; width: 40px; height: 40px; margin: 0 auto; display: flex; align-items: center; justify-content: center;">C</div>
Valid until 29 July 2029	Certificate number 0665-2820-6032-9171-4425

Score	Energy rating	Current	Potential
92+	A		
81-91	B		
69-80	C	78 c	78 c
55-68	D		
39-54	E		
21-38	F		
1-20	G		

The graph shows this property's current and potential energy efficiency.

Properties are given a rating from A (most efficient) to G (least efficient).

Properties are also given a score. The higher the number the lower your fuel bills are likely to be.

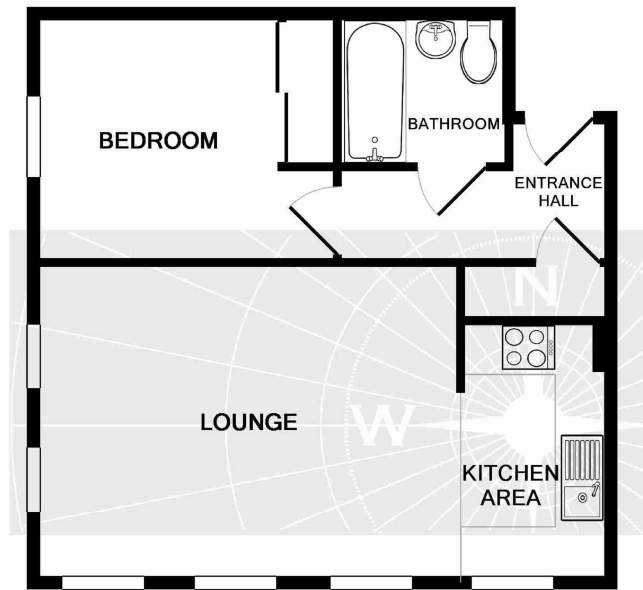


A superbly presented one bedroom ground floor apartment, built to a high specification. This spacious property benefits from fully fitted kitchen with built in appliances, oak effect flooring, luxury white bathroom with shower, full double glazing, gas central heating and allocated parking space. Access to local shops and Royal Holloway University is within five minutes' walk.

AVAILABLE 5TH APRIL 2022

Harvest Road, Englefield Green, Surrey, TW20 0SG

FLOOR PLAN



TOTAL APPROX. FLOOR AREA 428 SQ.FT. (39.8 SQ.M.)

Whilst every attempt has been made to ensure the accuracy of the floor plan contained here, measurements of doors, windows, rooms and any other items are approximate and no responsibility is taken for any error, omission, or mis-statement. This plan is for illustrative purposes only and should be used as such by any prospective purchaser. The services, systems and appliances shown have not been tested and no guarantee as to their operability or efficiency can be given
 Made with Metropix ©2011

All measurements are approximate. Nevin and Wells Residential have not tested any systems or appliances.

EPC

Flat 3 Arista Court 88, Harvest Road Englefield Green EGHAM TW20 0SG	Energy rating C
Valid until 29 July 2029	Certificate number 0665-2820-6032-9171-4425

Score	Energy rating	Current	Potential
92+	A		
81-91	B		
69-80	C	78 c	78 c
55-68	D		
39-54	E		
21-38	F		
1-20	G		

The graph shows this property's current and potential energy efficiency.

Properties are given a rating from A (most efficient) to G (least efficient).

Properties are also given a score. The higher the number the lower your fuel bills are likely to be.

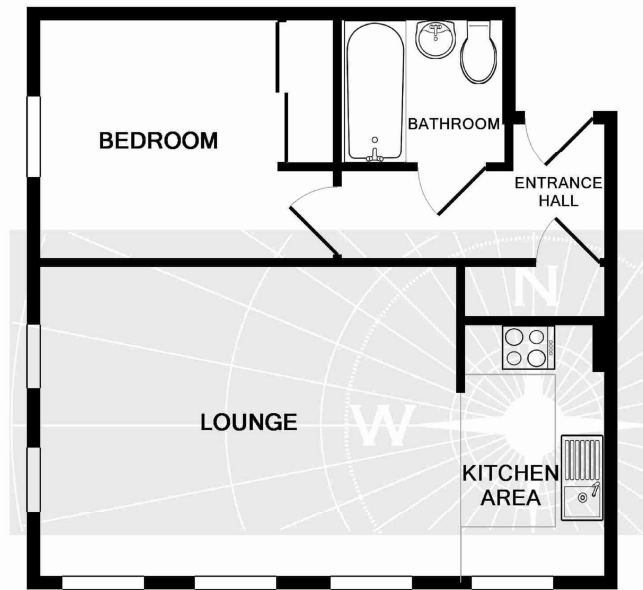


A superbly presented one bedroom ground floor apartment, built to a high specification. This spacious property benefits from fully fitted kitchen with built in appliances, oak effect flooring, luxury white bathroom with shower, full double glazing, gas central heating and allocated parking space. Access to local shops and Royal Holloway University is within five minutes' walk.

AVAILABLE 5TH APRIL 2022

Harvest Road, Englefield Green, Surrey, TW20 0SG

FLOOR PLAN



TOTAL APPROX. FLOOR AREA 428 SQ.FT. (39.8 SQ.M.)

Whilst every attempt has been made to ensure the accuracy of the floor plan contained here, measurements of doors, windows, rooms and any other items are approximate and no responsibility is taken for any error, omission, or mis-statement. This plan is for illustrative purposes only and should be used as such by any prospective purchaser. The services, systems and appliances shown have not been tested and no guarantee as to their operability or efficiency can be given
Made with Metropix ©2011

All measurements are approximate. Nevin and Wells Residential have not tested any systems or appliances.

EPC

Flat 3 Arista Court 88, Harvest Road Englefield Green EGHAM TW20 0SG	Energy rating 
Valid until 29 July 2029	Certificate number 0665-2820-6032-9171-4425

Score	Energy rating	Current	Potential
92+	A		
81-91	B		
69-80	C	78 c	78 c
55-68	D		
39-54	E		
21-38	F		
1-20	G		

The graph shows this property's current and potential energy efficiency.

Properties are given a rating from A (most efficient) to G (least efficient).

Properties are also given a score. The higher the number the lower your fuel bills are likely to be.



Harvest Road, Surrey, TW20 0SG

£1,000 pcm Unfurnished

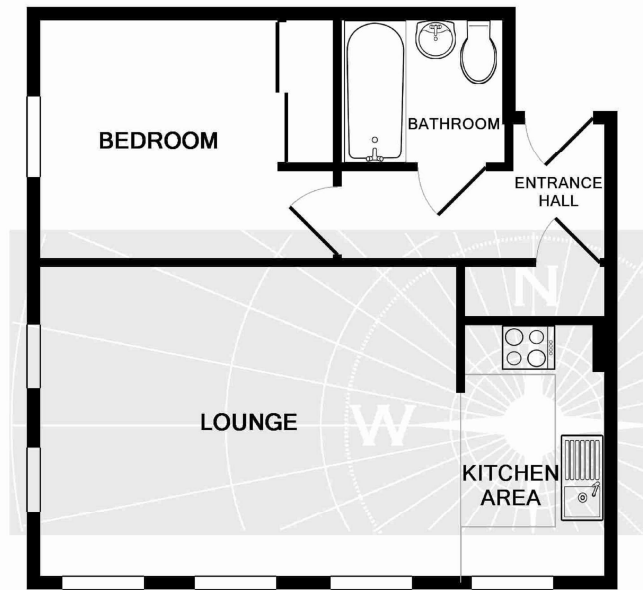


A superbly presented one bedroom ground floor apartment, built to a high specification. This spacious property benefits from fully fitted kitchen with built in appliances, oak effect flooring, luxury white bathroom with shower, full double glazing, gas central heating and allocated parking space. Access to local shops and Royal Holloway University is within five minutes' walk.

AVAILABLE 5TH APRIL 2022

Harvest Road, Englefield Green, Surrey, TW20 0SG

FLOOR PLAN



TOTAL APPROX. FLOOR AREA 428 SQ.FT. (39.8 SQ.M.)

Whilst every attempt has been made to ensure the accuracy of the floor plan contained here, measurements of doors, windows, rooms and any other items are approximate and no responsibility is taken for any error, omission, or mis-statement. This plan is for illustrative purposes only and should be used as such by any prospective purchaser. The services, systems and appliances shown have not been tested and no guarantee as to their operability or efficiency can be given
 Made with Metropix ©2011

All measurements are approximate. Nevin and Wells Residential have not tested any systems or appliances.

EPC

Flat 3 Arista Court 88, Harvest Road Englefield Green EGHAM TW20 0SG	Energy rating C
Valid until 29 July 2029	Certificate number 0665-2820-6032-9171-4425

Score	Energy rating	Current	Potential
92+	A		
81-91	B		
69-80	C	78 c	78 c
55-68	D		
39-54	E		
21-38	F		
1-20	G		

The graph shows this property's current and potential energy efficiency.

Properties are given a rating from A (most efficient) to G (least efficient).

Properties are also given a score. The higher the number the lower your fuel bills are likely to be.

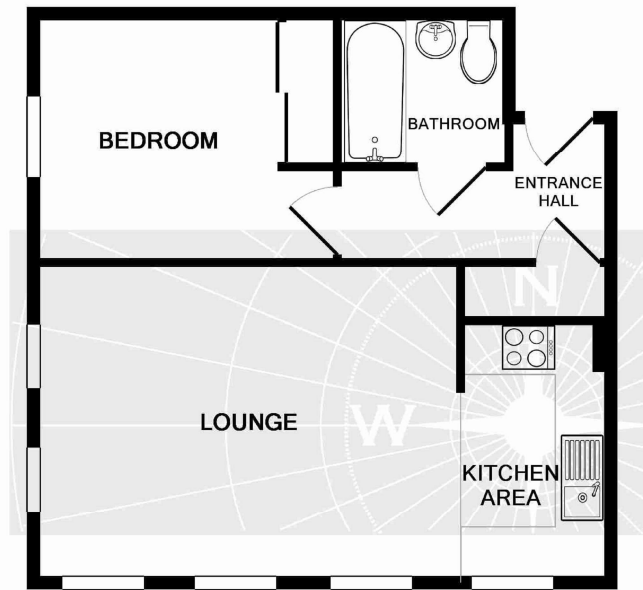


A superbly presented one bedroom ground floor apartment, built to a high specification. This spacious property benefits from fully fitted kitchen with built in appliances, oak effect flooring, luxury white bathroom with shower, full double glazing, gas central heating and allocated parking space. Access to local shops and Royal Holloway University is within five minutes' walk.

AVAILABLE 5TH APRIL 2022

Harvest Road, Englefield Green, Surrey, TW20 0SG

FLOOR PLAN



TOTAL APPROX. FLOOR AREA 428 SQ.FT. (39.8 SQ.M.)

Whilst every attempt has been made to ensure the accuracy of the floor plan contained here, measurements of doors, windows, rooms and any other items are approximate and no responsibility is taken for any error, omission, or mis-statement. This plan is for illustrative purposes only and should be used as such by any prospective purchaser. The services, systems and appliances shown have not been tested and no guarantee as to their operability or efficiency can be given
 Made with Metropix ©2011

All measurements are approximate. Nevin and Wells Residential have not tested any systems or appliances.

EPC

Flat 3 Arista Court 88, Harvest Road Englefield Green EGHAM TW20 0SG	Energy rating 
Valid until 29 July 2029	Certificate number 0665-2820-6032-9171-4425

Score	Energy rating	Current	Potential
92+	A		
81-91	B		
69-80	C	78 c	78 c
55-68	D		
39-54	E		
21-38	F		
1-20	G		

The graph shows this property's current and potential energy efficiency.

Properties are given a rating from A (most efficient) to G (least efficient).

Properties are also given a score. The higher the number the lower your fuel bills are likely to be.