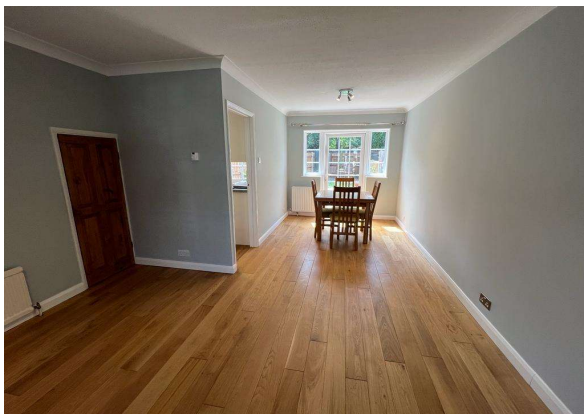




Albany Place, Egham, Surrey, TW20 9HG £1700 pcm UnFurnished



A recently redecorated/modernised three bedroom end terrace property located in central Egham. Situated within a NO THROUGH ROAD just yards from High Street amenities and mainline train station. Accommodation comprises entrance hallway, downstairs W.C, lounge/ dining room, fitted kitchen, luxury first floor shower room and private rear garden.

AVAILABLE NOW

Albany Place, Egham, Surrey, TW20 9HQ

EPC

8 Albany Place EGHAM TW20 9HG		Energy rating C
Valid until 14 June 2032	Certificate number 0370-2665-1160-2292-0725	

Property type End-terrace house

Total floor area 75 square metres

Energy efficiency rating for this property

This property's current energy rating is C. It has the potential to be B.

[See how to improve this property's energy performance.](#)

Score	Energy rating	Current	Potential
92+	A		
81-91	B		88 B
69-80	C	74 c	
55-68	D		
39-54	E		
21-38	F		
1-20	G		

The graph shows this property's current and potential energy efficiency.

Properties are given a rating from A (most efficient) to G (least efficient).

Properties are also given a score. The higher the number the lower your fuel bills are likely to be.

For properties in England and Wales:

COUNCIL TAX BAND: D