

A superbly presented one bedroom first floor flat, situated in a no through road, within a ten-minute walk of Staines upon Thames high street and large Sainsburys store. Benefits include double glazing, modern kitchen and bathroom, gas central heating and allocated parking. Access to Staines upon Thames station and the M25 is within a one-mile radius.

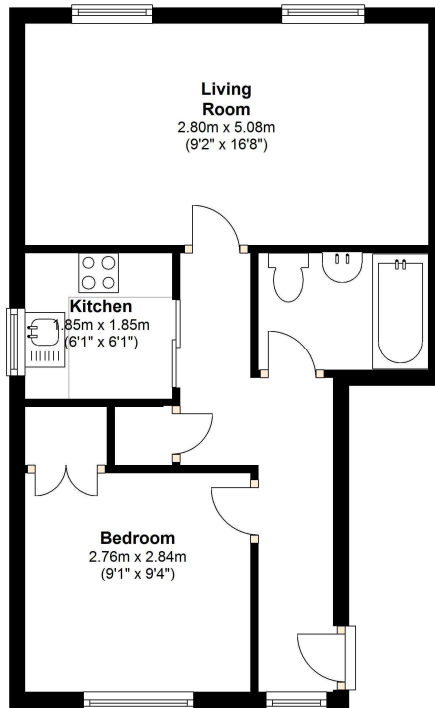
AVAILABLE NOW

Claremont Road, Middlesex, TW18 3AS

FLOOR PLAN

First Floor

Approx. 36.2 sq. metres (389.8 sq. feet)



Total area: approx. 36.2 sq. metres (389.8 sq. feet)

All measurements are approximate. Nevin and Wells Residential have not tested any systems or appliances.

AWAITING EPC