

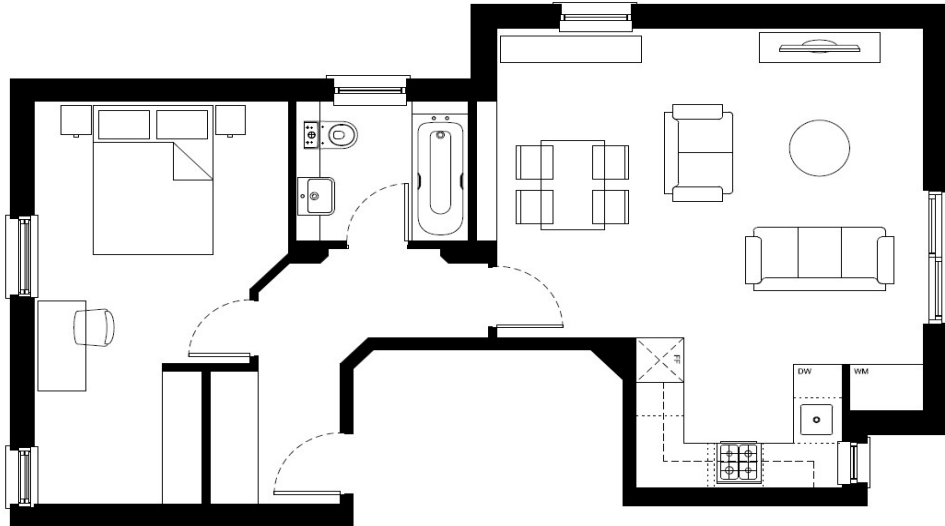


A stunning first floor one bedroom conversion apartment set in the centre of Egham only a few minutes walk from the station, High Street shops and the newly built Magna square complex. This property is larger than your average one-bedroom apartment and must be viewed internally as also has fully fitted kitchen with dishwasher, larger than average main bedroom and Juliette balcony

AVAILABLE 18th NOVEMBER 2022

Osborne Road, Egham, Surrey, TW20 9RN

FLOORPLAN



EPC

First Floor Flat The Osborne Road EGHAM TW20 9RN	Energy rating C
Valid until 23 December 2028	Certificate number 9818-6901-7352-6818-8954

Property type	Mid-floor flat
Total floor area	55 square metres

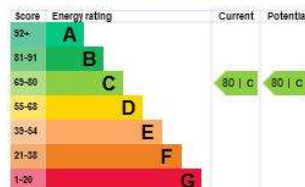
Rules on letting this property

Properties can be let if they have an energy rating from A to E.
You can read [guidance for landlords on the regulations and exemptions](#).

Energy efficiency rating for this property

This property's current energy rating is C. It has the potential to be C.

[See how to improve this property's energy performance.](#)



The graph shows this property's current and potential energy efficiency.
Properties are given a rating from A (most efficient) to G (least efficient).
Properties are also given a score. The higher the number the lower your fuel bills are likely to be.

- For properties in England and Wales:
- the average energy rating is D
 - the average energy score is 60

COUNCIL TAX BAND: C