

A stunning and completely refurbished two bedroom house, situated in a quiet cul-de-sac. Benefits include brand new windows, spacious lounge, gloss white kitchen, white bathroom with mixer shower, gas central heating, secluded garden and allocated parking. Available unfurnished immediately.

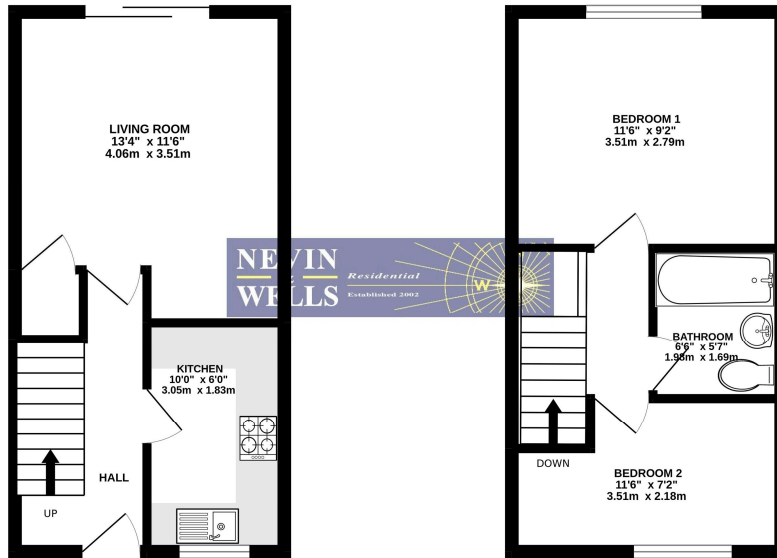
AVAILABLE NOW

Alton Court, Chertsey Lane, Staines upon Thames, Middlesex, TW18 3LH

FLOORPLAN

GROUND FLOOR
272 sq.ft. (25.3 sq.m.) approx.

1ST FLOOR
272 sq.ft. (25.3 sq.m.) approx.



TOTAL FLOOR AREA : 545 sq.ft. (50.6 sq.m.) approx.

Whilst every attempt has been made to ensure the accuracy of the floorplan contained here, measurements of doors, windows, rooms and any other items are approximate and no responsibility is taken for any error, omission or mis-statement. This plan is for illustrative purposes only and should be used as such by any prospective purchaser. The services, systems and appliances shown have not been tested and no guarantee as to their operability or efficiency can be given.
Made with Metropix 62022

EPC

5, Alton Court Aymer Drive STAINES TW18 3LH		Energy rating C
Valid until 6 March 2029	Certificate number 8294-6827-9390-2643-6906	
Property type	Mid-terrace house	
Total floor area	53 square metres	

Rules on letting this property

Properties can be let if they have an energy rating from A to E.

You can read [guidance for landlords on the regulations and exemptions](#).

Energy efficiency rating for this property

This property's current energy rating is C. It has the potential to be B.

[See how to improve this property's energy performance.](#)



The graph shows this property's current and potential energy efficiency.

Properties are given a rating from A (most efficient) to G (least efficient).

Properties are also given a score. The higher the number the lower your fuel bills are likely to be.

For properties in England and Wales:

- the average energy rating is D
- the average energy score is 60