



Elmbank Avenue, Englefield Green, TW20 0TQ

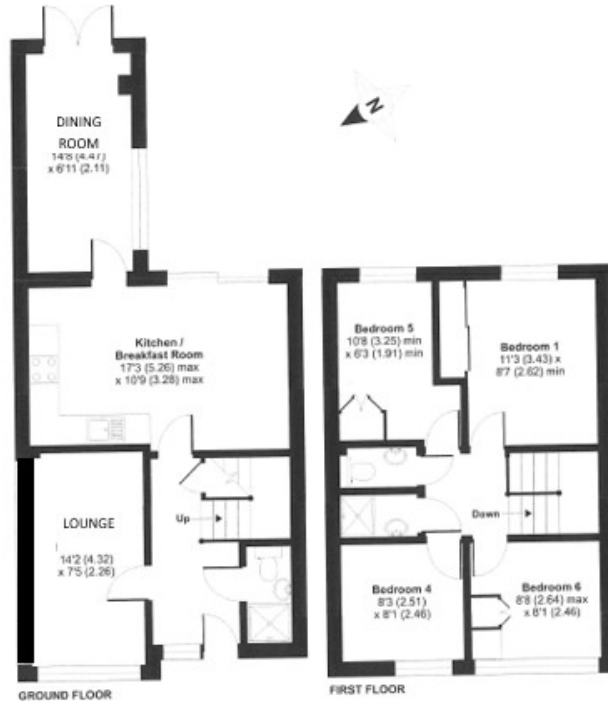
£375,000 F/H



A four bedroom terraced house which has been extended to offer versatile accommodation. There are two shower rooms, three receptions, gas central heating and the huge benefit of NO ONWARD CHAIN. There are excellent schools nearby and Windsor Great Park is on your doorstep, as well as local shops. **Zero stamp duty for FIRST TIME BUYERS up to £425,000.**

Elmbank Avenue, Englefield Green, Surrey, TW20 0TQ

FLOOR PLAN



Whilst every attempt has been made to ensure the accuracy of this floor plan contained herein, measurements of doors, windows and rooms are approximate and no responsibility is taken for any error, omission or misstatement. These plans are for representation purposes only as defined by RICS Code of Measuring Practice and should be used as such by any prospective purchaser. Specifically no guarantee is given on the total square footage of the property depicted on this plan. Any figure given is for initial guidance only and should not be relied on as a basis of valuation.

Copyright nichesam.co.uk 2017 Produced for Baron Residential REF : 236285

All measurements are approximate. Nevin & Wells Residential have not tested any systems or appliances.

EPC

