

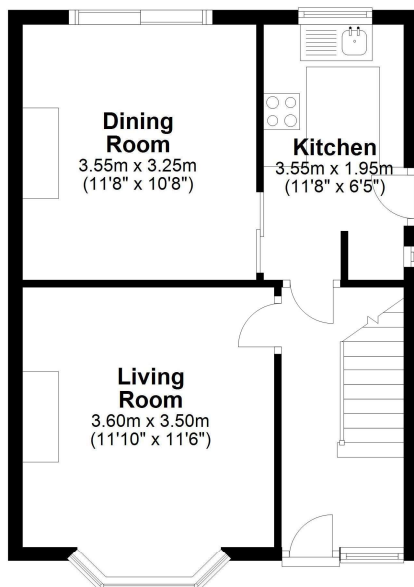
A three bedroom end-terrace property located in the heart of Egham Town Centre. Accommodation comprises entrance hallway, two reception rooms, kitchen, first floor family bathroom, own private garden and off street parking for one vehicle. Further benefits include double glazing throughout, gas central heating and **NO ONWARD CHAIN**. Zero stamp duty for **FIRST TIME BUYERS** up to £425,000.

Crown Street, Egham, Surrey, TW20 9BQ

FLOOR PLAN

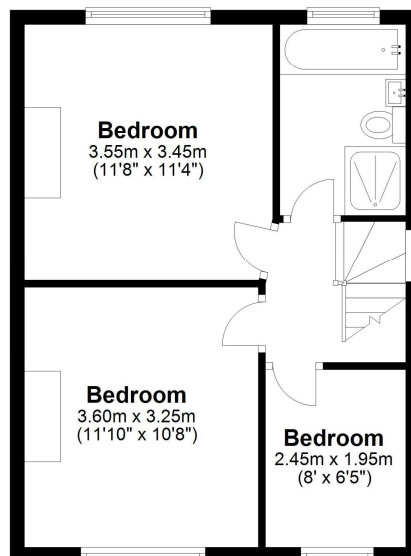
Ground Floor

Approx. 38.7 sq. metres (416.5 sq. feet)



First Floor

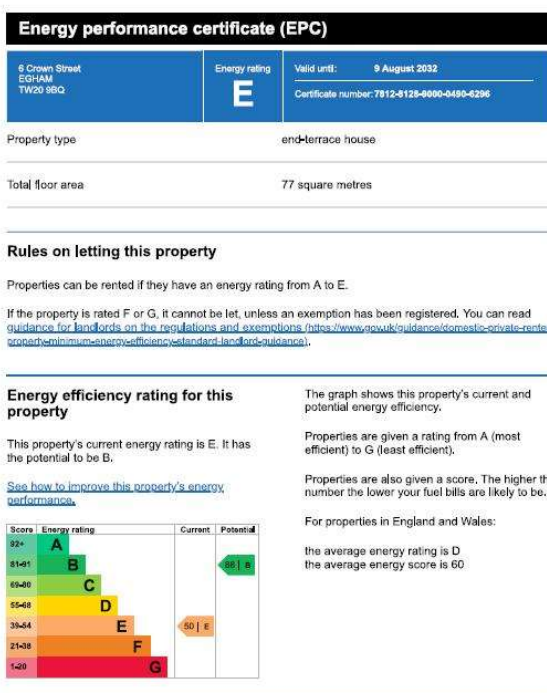
Approx. 38.4 sq. metres (413.8 sq. feet)



Total area: approx. 77.1 sq. metres (830.3 sq. feet)

All measurements are approximate. Nevin & Wells Residential have not tested any systems or appliances.

EPC



COUNCIL TAX BAND:

D - RUNNYMEDE BOROUGH COUNCIL