



Station Road, Surrey, TW20 9FD

£1,500 pcm Guide Price



Two double bedroom first floor apartment in excellent condition, with en-suite facilities, modern four piece suite bathroom, spacious lounge, fully fitted kitchen, secure entry phone system and underground parking. Located close to station, Magna Square and High Street shops.

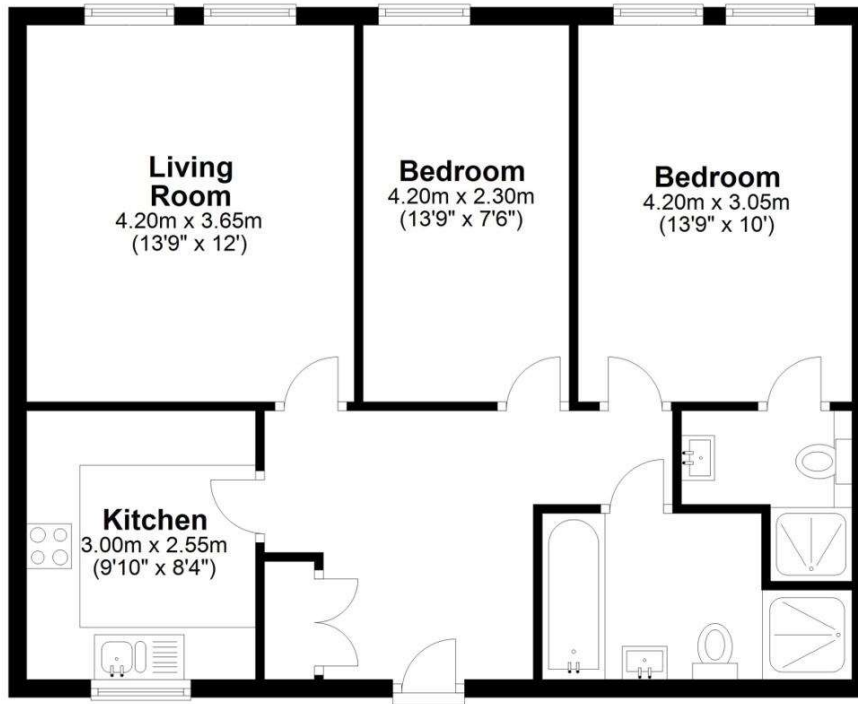
AVAILABLE 1ST AUGUST 2023 FURNISHED

Station Road, Egham, Surrey, TW20 9FD

FLOORPLAN

First Floor

Approx. 67.1 sq. metres (722.5 sq. feet)



Total area: approx. 67.1 sq. metres (722.5 sq. feet)

EPC

14 Beckingham Metro Station Road EGHAM TW20 9FD	Energy rating B
Valid until 21 June 2032	Certificate number 2128-0002-9206-7332-3214

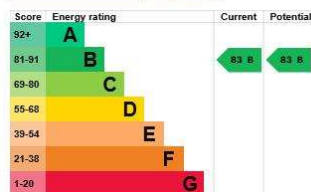
Property type	Mid-floor flat
Total floor area	67 square metres

Rules on letting this property

Properties can be let if they have an energy rating from A to E.
You can read [guidance for landlords on the regulations and exemptions](#).

Energy rating and score

This property's current energy rating is B. It has the potential to be B.
[See how to improve this property's energy efficiency.](#)



The graph shows this property's current and potential energy rating.

Properties get a rating from A (best) to G (worst) and a score. The better the rating and score, the lower your energy bills are likely to be.

- For properties in England and Wales:
- the average energy rating is D
 - the average energy score is 60

All measurements are approximate. Nevin and Wells Residential have not tested any systems or appliances.