



Gospel Hall, Egham, Surrey, TW20 8HA

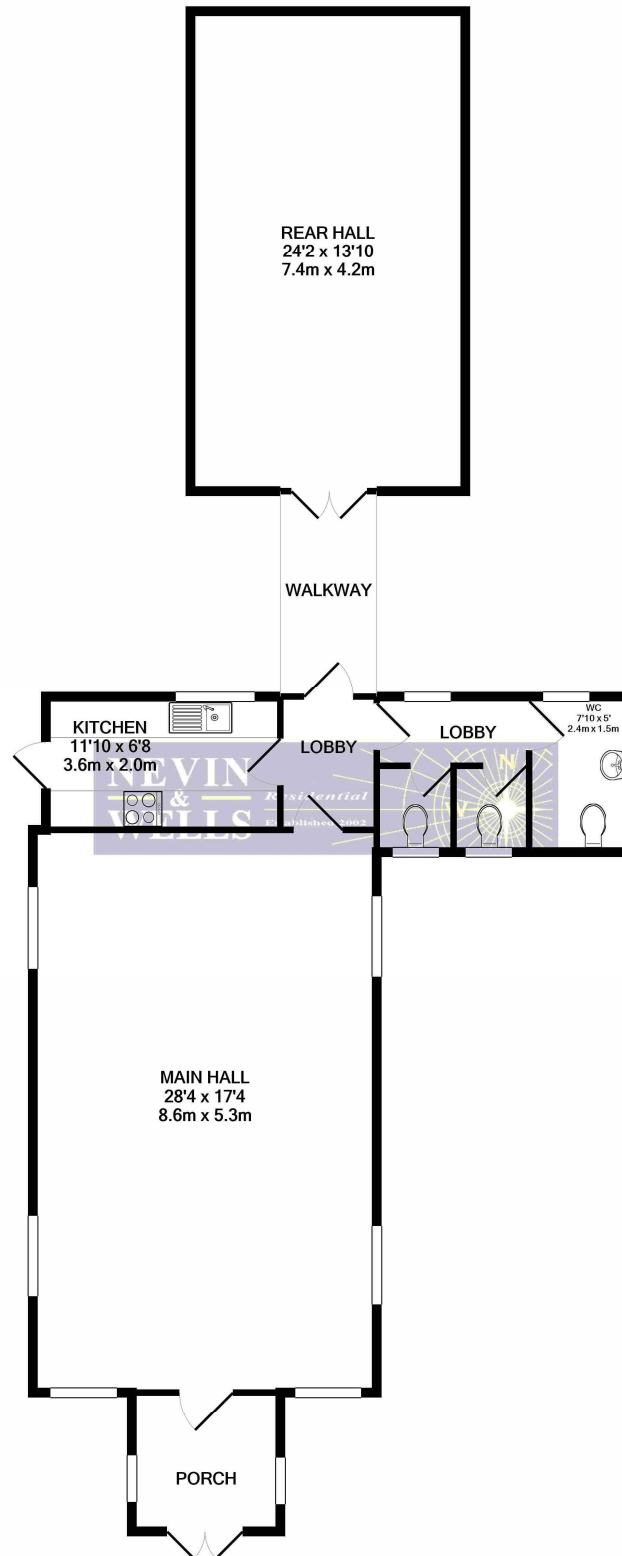
£450,000 Freehold



Being sold without planning permission, but with huge potential to convert or build apartments (subject to planning permission) is this former Gospel Hall with additional unit to the rear and ample parking. Located close to shops and schools. Could also make a perfect nursery, gym or place of worship.

Gospel Hall, Thorpe Lea Road, Egham, Surrey, TW20 8HA

FLOOR PLAN



TOTAL APPROX. FLOOR AREA 1138 SQ.FT. (105.7 SQ.M.)

Whilst every attempt has been made to ensure the accuracy of the floor plan contained here, measurements of doors, windows, rooms and any other items are approximate and no responsibility is taken for any error, omission, or mis-statement. This plan is for illustrative purposes only and should be used as such by any prospective purchaser. The services, systems and appliances shown have not been tested and no guarantee as to their operability or efficiency can be given
Made with Metropix ©2020