



Guide Price £260,000

2 Bedroom Terraced House for sale
6 Northfield Loke, Wymondham



EweMove
SALES AND LETTINGS



Overview

Nestled in peaceful surroundings, this property is the perfect retreat from the hustle and bustle of daily life. If southerly rays, open views, and relaxed living is what you seek, we have it all right here!



Key Features

- Offered Chain Free
- Delightful 2-Bedroom Home
- Exceptional and Undisturbed Rural Views
- South Facing Garden
- Incredibly Private Location
- Off-Street Parking





Welcome to Northfield Loke, Wymondham. This charming mid-terrace property is situated in a highly sought-after location, boasting stunning undisturbed rural views that will take your breath away. Complete with off-road parking for up to two cars.

As you enter the property, you are greeted by a bright and spacious living area, which is perfect for entertaining guests or enjoying a relaxing night in. The living area leads onto a well-equipped kitchen, with plenty of counter space and storage. The lush views of the garden and beyond will only encourage your culinary skills.

There are two bedrooms on the first floor. Bedroom one overlooks the rear fields and provides built-in storage, while bedroom two is a comfortable double lending itself to various uses. The ground floor bathroom offers shower over bath, good floor space and a heated towel rail.

One of the standout features of this property is its south-facing garden, which is bathed in sunlight throughout the day, providing the perfect spot for alfresco dining or simply soaking up the sun. The garden also features a delightful home office, perfect for home-work life balance. With these views, no task is too stressful!

Another key feature of this property is its convenient location, with the town centre just a short walk away. Here, you will find a wide range of local businesses, shops, eateries, and amenities. Off-street parking is included and bus route 6 within a short walk.

Overall, this stunning property offers the perfect blend of countryside tranquillity and convenient living. Don't miss out on the opportunity to make this house your home! Viewings are readily available. Simply call us 24/7 to book yours.



Lounge Diner

18' 4" x 11' 1" (5.60m x 3.40m)

Feature fireplace with solid wood surround and mantle, storage alcove, open staircase and multiple sockets.

Kitchen

11' 9" x 10' 9" (3.60m x 3.30m)

Integrated fridge, freezer, oven, hob and extractor fan, built-in base and wall units, multiple sockets and houses consumer unit.

Bathroom

9' 8" x 5' 4" (2.95m x 1.65m)

Shower over bath, hand basic, WC and heated towel rail, tiled walls to ceiling height.

Bedroom 1

11' 9" x 8' 10" (3.60m x 2.70m)

Carpet flooring, two built-in storage cupboards and multiple sockets.

Bedroom 2

11' 1" x 6' 2" (3.40m x 1.90m)

Laminate flooring and multiple sockets.

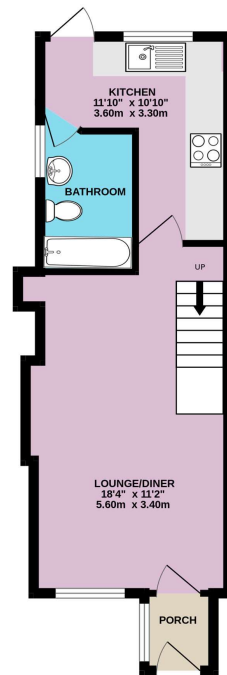
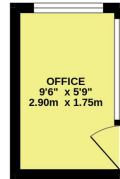
Office

9' 6" x 5' 8" (2.90m x 1.75m)

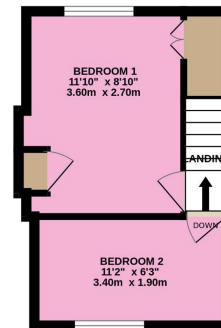
Dual aspect windows, sockets and light.

Floorplans

GROUND FLOOR
426 sq.ft. (39.6 sq.m.) approx.



1ST FLOOR
207 sq.ft. (19.2 sq.m.) approx.

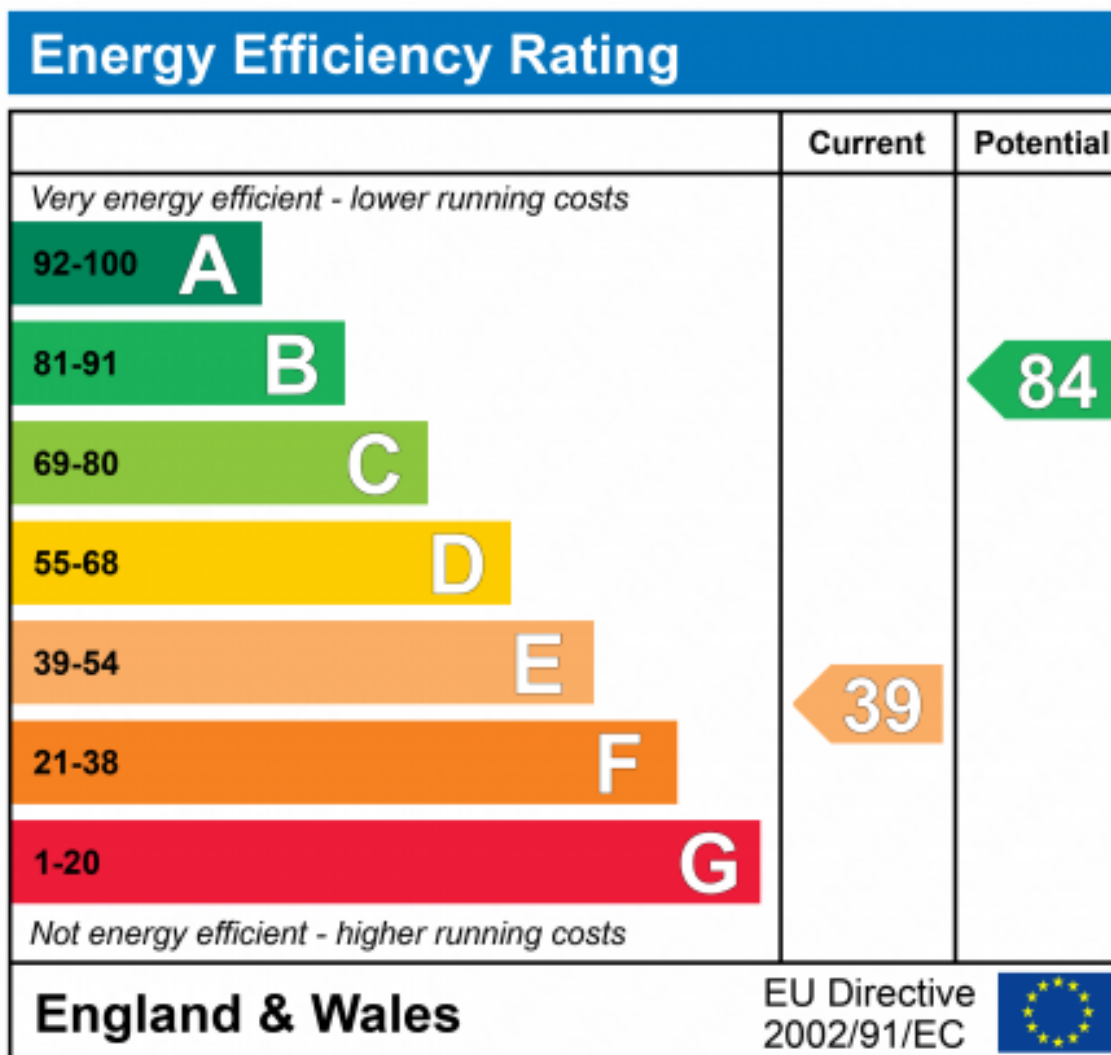


2-BEDROOM TERRACE HOUSE

TOTAL FLOOR AREA : 633 sq.ft. (58.8 sq.m.) approx.

Whilst every attempt has been made to ensure the accuracy of the floorplan contained here, measurements of doors, windows, rooms and any other items are approximate and no responsibility is taken for any error, omission or mis-statement. This plan is for illustrative purposes only and should be used as such by any prospective purchaser. The services, systems and appliances shown have not been tested and no guarantee as to their operability or efficiency can be given.

Made with Metropix ©2023





Marketed by EweMove Wymondham

01953 665 785 (24/7)

wymondham@ewemove.com



EweMove
SALES AND LETTINGS