



Guide Price £500,000

5 Bedroom Detached Bungalow for sale
Rose Farm, Stepshort, Belton, Great Yarmouth



EweMove
SALES AND LETTINGS



Overview

Say farewell to those feelings of confinement and replace them with the relaxed spaciousness of this expansive detached bungalow. Ideally situated just a brief 10-minute drive away from the picturesque Norfolk coastline, this impressive property offers a wealth of features allowing you to enjoy a comfortable lifestyle alongside friends and family.



Key Features

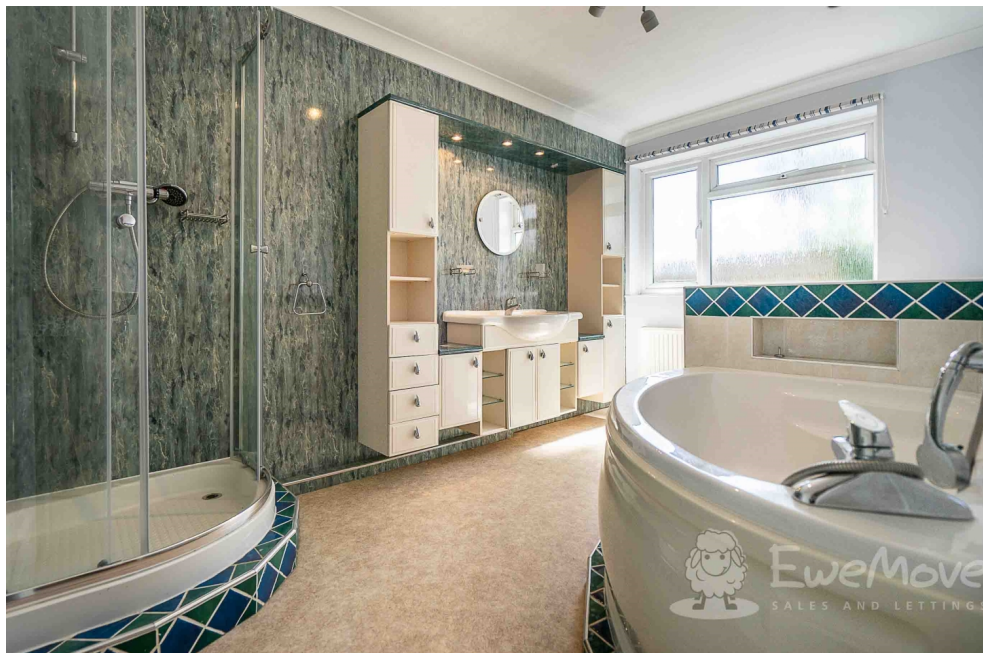
- Extensive Detached Bungalow
- Ultimate in Versatility with Potential for 7 Bedrooms
- Bright and Spacious Living
- South-Facing Garden
- Secure and Extensive Driveway Parking
- Village Location Surrounded by an Active Community
- 10 Minute Drive from the Beach
- Chain Free





Welcome to Rose Farm, Belton. With its roomy design, this bungalow provides ample opportunity for relaxation and entertainment enabling you to adapt to all that life throws your way. Whether you're seeking a tranquil retreat or a place to host gatherings, the generous layout accommodates your desires. The proximity to Norfolk's stunning coastline adds an extra layer of appeal, offering you the chance to explore the beauty of the region's beaches and coastal attractions.

The internal layout is uniquely versatile with multiple rooms allowing for a range of uses from storage, home office, games and hobby rooms, the choice is yours. The kitchen dining room will accommodate casual, formal, and buffet meals while the living room a ballroom if so desired. If you're wondering where all your guests will park, the gated driveway will serve perfectly!



Set within the village of Belton, local conveniences include a Tesco Express, pharmacy and eateries. A bus route into Great Yarmouth is within a moments' walk and fuller amenities such as supermarkets, shopping outlets, and restaurants can all be found within a 20-minute drive. Most importantly is the fabulous Marine Parade at Gorleston for ocean views and seaside walks at will.

This property is offered with no onward chain and viewings are readily available. Simply call us 24/7 to book yours.

Kitchen / Dining Room

18' 8" x 16' 0" (5.70m x 4.90m)

Wood laminate flooring, Fitted range of wall and base storage units, some glazed fronted, Drawers with worktop over, Inset sink unit with mixer tap,

Plumbing for dishwasher and space for an American style fridge-freezer, Fitted wood block breakfast bar, Double electric range cooker and fitted range master extractor, Television point, two ceiling light points and radiator

uPVC double glazed windows to side, double glazed door and sliding patio

Conservatory

16' 0" x 6' 2" (4.90m x 1.90m)

Vinyl floor covering, Radiator, power points and telephone points, Fitted wall lights, uPVC double glazed windows and door.

Living Room

24' 3" x 18' 8" (7.40m x 5.70m)

Two uPVC double glazed windows, Strip wood flooring, Feature wood burning stove and timber ceiling beam, Two ceiling light points and radiators, Television point

Office

16' 0" x 14' 11" (4.90m x 4.55m)

uPVC double glazed window and double doors, Tiled carpet flooring, Television point

Reception Hall

16' 0" x 15' 1" (4.90m x 4.60m)

uPVC double glazed door with feature motif, sealed unit inserts and matching full length side panels, Oak effect flooring, Radiator

Bedroom (Double) with Ensuite

17' 8" x 14' 9" (5.40m x 4.50m)

BEDROOM: Three UPVC double glazed windows, Oak effect flooring, Inset ceiling light and wall television point

DRESSING ROOM: Fitted range of hanging rails and shelving, Mirror fronted built-in wardrobes

ENSUITE: Wash hand basin and low level WC, Large shower cubicle with rainforest style overhead shower, plus additional shower attachment, Extractor and inset ceiling lights, Fitted mirror and mains shaver point, Obscured uPVC window

Bedroom 2

16' 0" x 13' 7" (4.90m x 4.15m)

uPVC double glazed window, Wood laminate flooring, Radiator, High level wall television point

Bedroom (Single) with Ensuite

11' 11" x 7' 4" (3.65m x 2.25m)

BEDROOM: Fitted carpet, uPVC double glazed window and radiator, Built-in airing cupboard

ENSUITE: Sliding door, Tiled flooring, Shower cubicle with mains shower

Low level WC, wash hand basin and extractor

Bedroom 4

11' 9" x 10' 4" (3.60m x 3.15m)

Two uPVC double glazed windows, Fitted carpet, Radiator

Bedroom 5

10' 4" x 10' 2" (3.15m x 3.10m)

uPVC double glazed window, Tiled carpet flooring, Radiator

Games Room

12' 3" x 8' 4" (3.75m x 2.55m)

uPVC double glazed window, Strip wood wall panelling, Television point

Laundry Room

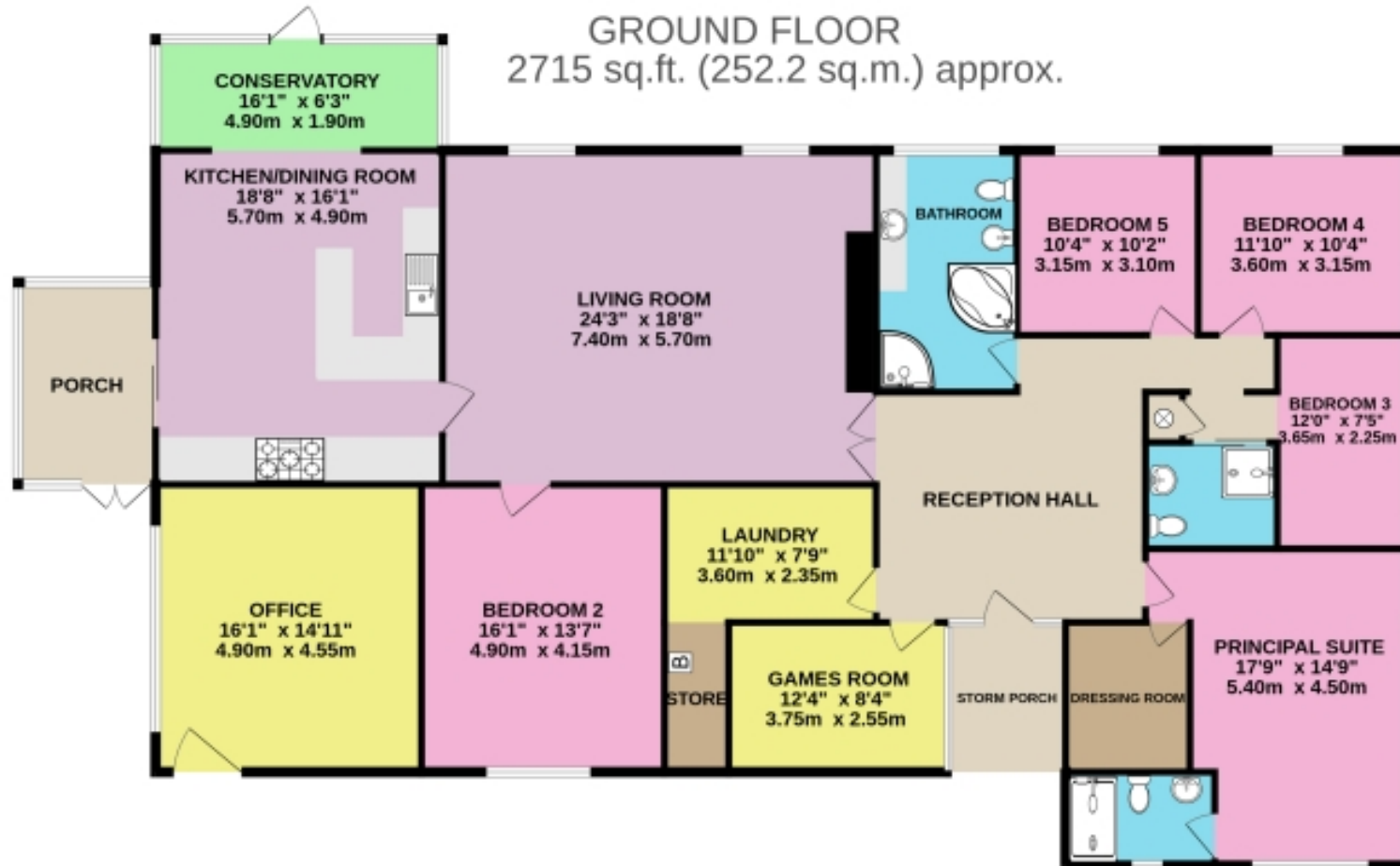
11' 9" x 7' 8" (3.60m x 2.35m)

Plumbing for washing machine, Power points and radiator, Access point to roof storage space, Opening to boiler room

Bathroom

13' 5" x 7' 10" (4.10m x 2.40m)

Floorplans

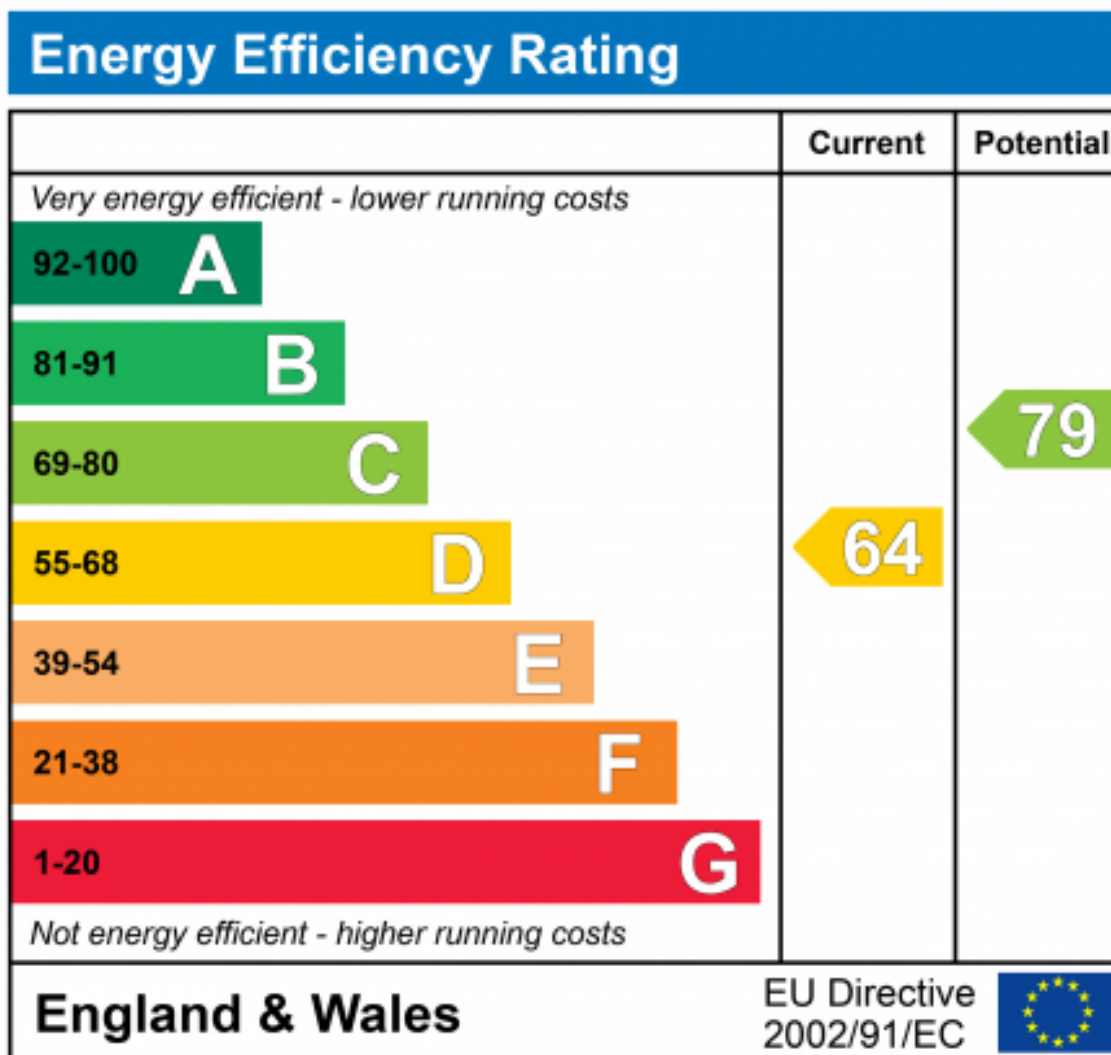


EXTENSIVE DETACHED BUNGALOW

TOTAL FLOOR AREA : 2715 sq.ft. (252.2 sq.m.) approx.

Whilst every attempt has been made to ensure the accuracy of the floorplan contained herein, measurements of doors, windows, rooms and any other items are approximate and no responsibility is taken for any error, omission or mis-statement. This plan is for illustrative purposes only and should be used as such by any prospective purchaser. The services, systems and appliances shown have not been tested and no guarantee as to their operability or efficiency can be given.

Made with Metropix ©2023





Marketed by EweMove Wymondham

01953 665 785 (24/7)

wymondham@ewemove.com

