



Guide Price £237,000

3 Bedroom House for sale
17 Halford Place, Attleborough



EweMove
SALES AND LETTINGS



Overview

The house that will keep on giving... Whether as a first time buy, an upsize, or downsize, this property provides comfortable spaces, storage aplenty, and enormous potential for dynamic changes.

Key Features

- No Onward Chain
- Two Good-Sized Double Bedrooms
- Single Bedroom with Built-In Storage
- Three Reception Rooms
- Bathroom Plus Ground Floor WC
- Sizeable Loft Space
- Opportunity for Spacious Driveway Parking
- Walking Distance to Town Centre, Supermarket and Schools





Welcome to Halford Place, Attleborough. This semi-detached 3-bedroom property boasts its maturity with sizeable reception and bedroom space, not to mention a range of generous storage cupboards on both floors. Even the hallway and landing offer a sense of space and potential storage solutions.

To the outside, a manageable and enclosed rear garden enjoys open space to the back. Its current layout already highlights where to enjoy the sunshine, entertaining, and quiet downtime. The front and side offer the rare opportunity to explore driveway parking and exterior storage ideas, and free-for-all parking is readily available on the doorstep.

This property is located within walking distance from Attleborough town centre offering an abundance of shops and eateries, local schools, and all the daily essentials. Attleborough train station and local bus routes provide regular routes to Norwich, Diss, Cambridge, and London.

Offered with no onward chain, viewings are readily available. Simply call us 24/7 to book yours.



Sitting Room

13' 7" x 12' 5" (4.15m x 3.80m)

uPVC double-glazed window, fitted carpet, wall-mounted gas heater with mantle, radiator, multiple sockets, and television ariel.

Kitchen Diner

13' 7" x 11' 9" (4.15m x 3.60m)

uPVC double-glazed window, laminate flooring, fitted base, and wall-mounted storage units, radiator, multiple sockets, freestanding oven, hob and fridge-freezer, extractor fan, spaces for freestanding dishwasher, and washing machine.

Conservatory

12' 1" x 9' 2" (3.70m x 2.80m)

Two sides double-glazed windows plus interior kitchen window, tiled flooring, radiator, sockets, and double French doors.

WC

4' 11" x 2' 5" (1.50m x 0.75m)

Internal window, hand basin, toilet, and houses the boiler.

Bedroom 1

12' 9" x 10' 5" (3.90m x 3.20m)

uPVC double-glazed window, fitted carpet, multiple sockets, television ariel, and radiator.

Bedroom 2

11' 5" x 10' 5" (3.50m x 3.20m)

uPVC double-glazed window, fitted carpet, fitted shelving, radiator, and multiple sockets.

Bedroom 3

9' 10" x 9' 0" (3.00m x 2.75m)

uPVC double-glazed window, fitted carpet, built-in storage cupboard, radiator, and socket.

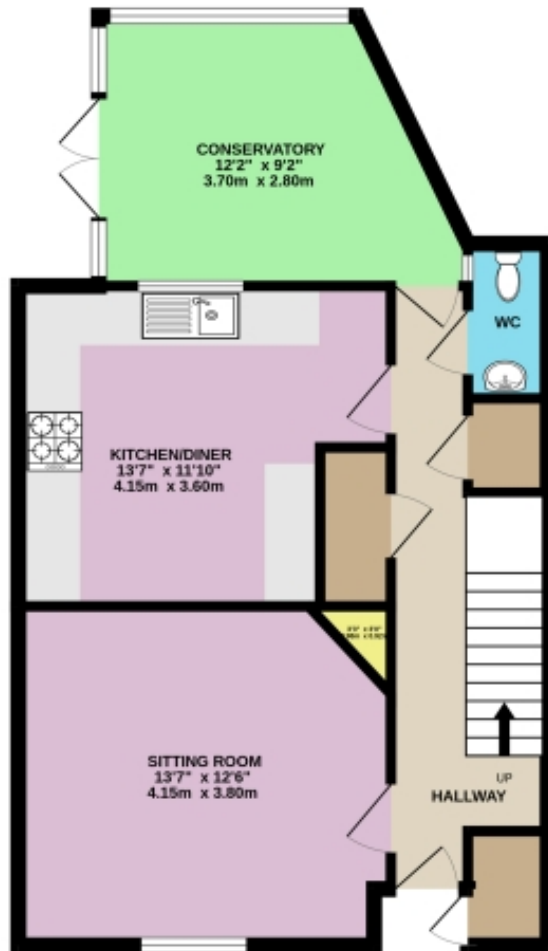
Bathroom

6' 10" x 5' 6" (2.10m x 1.70m)

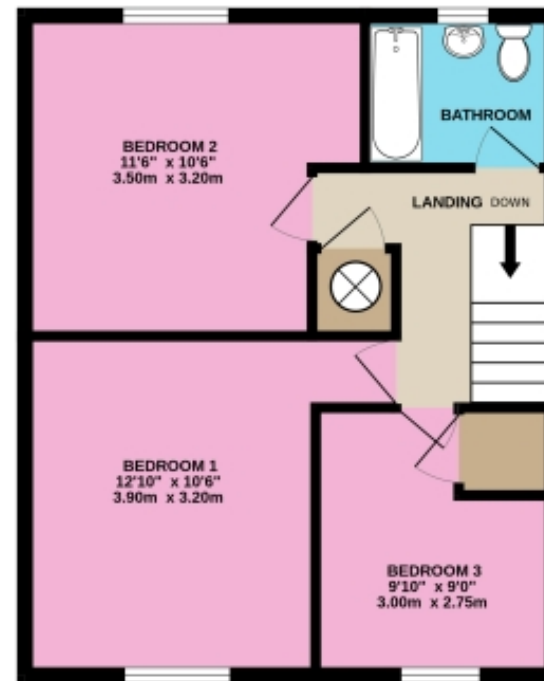
uPVC double-glazed obscured window, fitted shower over bath, hand basin, and toilet.

Floorplans

GROUND FLOOR
584 sq.ft. (54.3 sq.m.) approx.



1ST FLOOR
468 sq.ft. (43.5 sq.m.) approx.

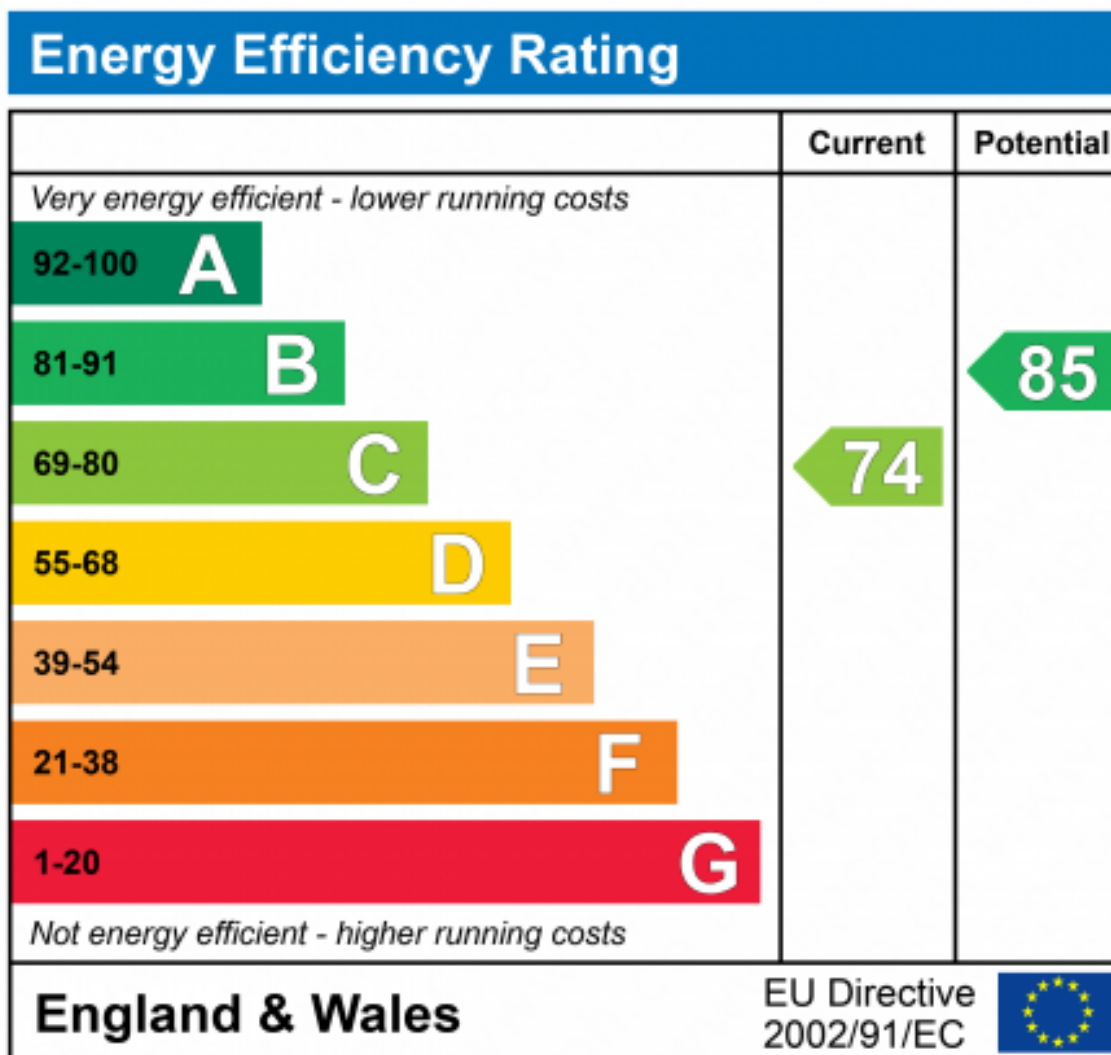


SEMI-DETACHED 3-BEDROOM

TOTAL FLOOR AREA: 1053 sq.ft. (97.8 sq.m.) approx.

Whilst every attempt has been made to ensure the accuracy of the floorplan contained here, measurements of doors, windows, rooms and any other items are approximate and no responsibility is taken for any error, omission or mis-statement. This plan is for illustrative purposes only and should be used as such by any prospective purchaser. The services, systems and appliances shown have not been tested and no guarantee as to their operability or efficiency can be given.

Made with Metropis ©2023





Marketed by EweMove Wymondham

01953 665 785 (24/7)

wymondham@ewemove.com



EweMove

SALES AND LETTINGS