



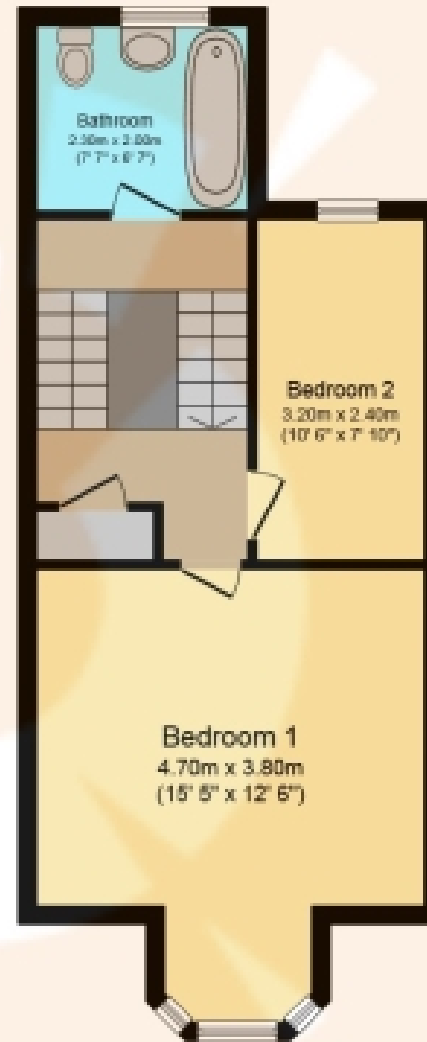
6 Harvey Cottages Harvey Terrace, Lochwinnoch

Offers Over £169,995





Ground Floor



First Floor

Total floor area 87.5 sq.m. (942 sq.ft.) approx

This plan is for illustration purposes only and may not be representative of the property. Plan not to scale. Powered by PropertyBox

THE PROPERTY

*CHARMING TERRACED COTTAGE WITHIN SOUGHT-AFTER LOCALE * EXTENSIVE REAR GARDEN * CLOSEBY TO AMENITIES & PUBLIC TRANSPORT LINKS * Please contact your personal estate agent, The Property Boom for much more information and a copy of the home report.

Discover the rare gem that is No.6 Harvey Cottages, a seldom-available terraced cottage nestled within the highly sought-after Lochwinnoch locale. This charming property combines timeless character with modern comforts, offering a warm and welcoming sanctuary. Located in the heart of Lochwinnoch, it's an opportunity to live in a community renowned for its charm and character.

Approaching the property, a neatly paved walkway leads to the front entrance, setting the stage for what awaits within. As you step inside, you are greeted by a warm and welcoming reception hallway, which provides a seamless transition into the lounge. The family lounge is the epitome of comfort and style, featuring impressive dimensions and striking ceiling heights. Natural light flows generously through the bay window, and a charming fireplace adds character and warmth to the room.

The well-appointed dining kitchen features ample white wall and base mounted units, perfectly complimented by solid timber counter tops. The kitchen further benefits from ample space for freestanding appliances as well as plentiful room for enjoying an evening meal with family.

Adjacent to the kitchen, you'll discover a flexible utility space that can easily double as a playroom or home office, adapting to your family's needs with ease.

Moving to the upper level, you'll find two generously proportioned bedrooms, with each room exuding a sense of comfort and tranquility.

Completing the internal features of this property is a fully tiled three-piece bathroom. It includes a bathtub with an overhead shower, a W.C., and a wash hand basin, ensuring that your daily routine is both practical and stylish.

Step into the fully enclosed rear garden, predominantly laid to lawn and boasting a decking area, making it a perfect space for children and pets to enjoy. Whether you're relaxing in the sun or watching your loved ones play, this space is sure to become a focal point for family life.

Lochwinnoch is a picturesque village with great local amenities and schooling. Castle Semple Loch is nearby and offers various water sports and wildlife opportunities. There is beautiful countryside and scenic walks at nearby Clyde Muirshiel Regional Park. Lochwinnoch also benefits from superb local transport links. Park & Ride facility is just a short drive away and the A737 offers road links to Glasgow Airport, city centre and further afield.

Viewing by appointment - please contact The Property Boom to arrange a viewing or for any further information and a copy of the Home Report. Any areas, measurements or distances quoted are approximate and floor Plans are only for illustration purposes and are not to scale.

THESE PARTICULARS ARE ISSUED IN GOOD FAITH BUT DO NOT CONSTITUTE REPRESENTATIONS OF FACT OR FORM PART OF ANY OFFER OR CONTRACT

www.thepropertyboom.com
70 West Regent Street, Glasgow, G2 2QZ
Tel: 0333 900 9089 / Email: smile@thepropertyboom.com