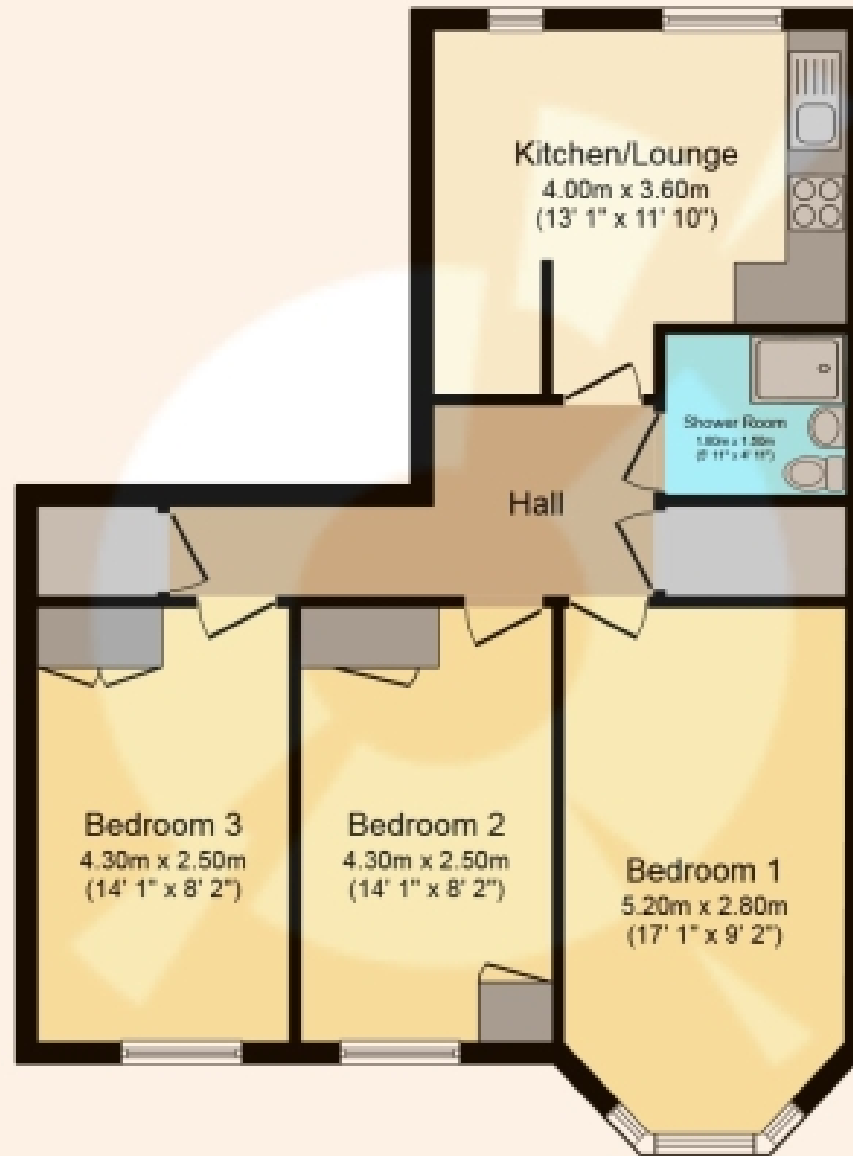




Benview Street, Glasgow

Offers Over £155,000





Floor Plan

Total floor area 63.4 sq.m. (682 sq.ft.) approx

This plan is for illustration purposes only and may not be representative of the property. Plan not to scale. Powered by PropertyBox

THE PROPERTY

Spacious Three-Bedroom Tenement Apartment with Fabulous Views. Discover the epitome of city living with open views that stretch over the picturesque Ruchill Park. This second-floor apartment is a spacious haven waiting to welcome you home. Please contact Boom to arrange a viewing of this fantastic versatile traditional blonde sandstone flat. A security entry system provides entry into a well maintained communal close. Step into this warm and inviting apartment and prepare to be impressed by the scale and charm that this home has to offer.

The property is currently configured as 3 large bedrooms and an open plan lounge/kitchen. This layout can easily be changed if required.

The open plan area is not just functional but also a place for culinary creativity. Its size allows for a dining and seating area. Dual windows flood the room with natural light and has views out to the communal drying area.

This apartment offers the convenience of gas-fired central heating and double-glazed windows for year-round comfort. Quality laminate flooring adds a touch of sophistication to the interior, making maintenance a breeze.

Rest easy in three generously sized bedrooms, offering ample space and comfort for your personal retreat. The master bedroom enjoys the expansive bay window with fabulous views of the park, a perfect space for relaxation and unwinding. The property features an immaculate well-appointed ultra-modern shower room, adding a touch of luxury to your daily routine.

With stunning open views to the front over Ruchill Park, the location is a major feature, with Byres Road and Hillhead underground station within a mile's distance. You have easy access to both the city centre and the bustling West End.

This property is conveniently located near prestigious institutions, including Glasgow University and the Glasgow School of Art. Enjoy the culture and arts scene with Kelvingrove, Byres Road, and the stunning Botanical Gardens all within easy reach.

This spacious tenement apartment offers you the best of city living with comfort and style. Whether you're a family looking for a new home or an investor seeking an attractive opportunity, this property is your perfect match. Contact Boom today to schedule a viewing and experience the beauty and convenience of this exceptional apartment. Your dream home with a view is waiting for you!

Viewing by appointment - please contact The Property Boom to arrange a viewing or for any further information and a copy of the Home Report. Any areas, measurements or distances quoted are approximate and floor Plans are only for illustration purposes and are not to scale.

WOULD YOU LIKE A FREE DETAILED VALUATION OF YOUR OWN PROPERTY ? GET IN TOUCH WITH THE PROPERTY BOOM NOW AND WE'LL ARRANGE THAT AT A TIME CONVENIENT TO YOU.

THESE PARTICULARS ARE ISSUED IN GOOD FAITH BUT DO NOT CONSTITUTE REPRESENTATIONS OF FACT OR FORM PART OF ANY OFFER OR CONTRACT.

www.thepropertyboom.com
70 West Regent Street, Glasgow, G2 2QZ
Tel: 0333 900 9089 / Email: smile@thepropertyboom.com