



Winslade House, Egham, Surrey, TW20 0AY £1,350pcm Guide Price

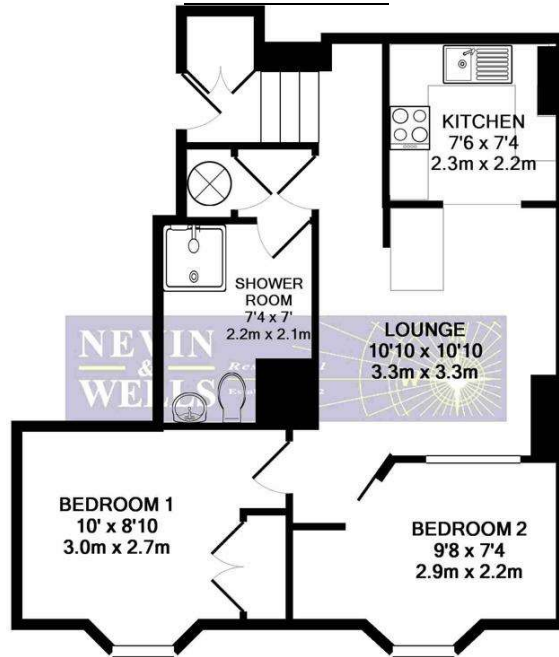


A very well presented two bedroom church conversion apartment which has undergone many improvements by the current owner, to include a recently fitted kitchen, luxury shower room, recently decorated, oak flooring and electric heating. Further benefits include allocated parking for one vehicle and visitor parking.

AVAILABLE 2nd JANUARY 2024 - UNFURNISHED

Winslade House, Egham, Surrey, TW20 0AY

FLOORPLAN



TOTAL APPROX. FLOOR AREA 504 SQ.FT. (46.9 SQ.M.)

Whilst every attempt has been made to ensure the accuracy of the floor plan contained here, measurements of doors, windows, rooms and any other items are approximate and no responsibility is taken for any error, omission, or mis-statement. This plan is for illustrative purposes only and should be used as such by any prospective purchaser. The services, systems and appliances shown have not been tested and no guarantee as to their operability or efficiency can be given
Made with Metropix ©2019

EPC

Flat 3 Winslade House 4, Egham Hill EGHAM TW20 0AY	Energy rating D
Valid until 6 November 2029	Certificate number 0438-6981-7239-6871-6954

Property type	Ground-floor flat
Total floor area	54 square metres

Rules on letting this property

Properties can be let if they have an energy rating from A to E.
[You can read guidance for landlords on the regulations and exemptions.](#)

Energy rating and score

This property's current energy rating is D. It has the potential to be C.

[See how to improve this property's energy efficiency.](#)



The graph shows this property's current and potential energy rating.

Properties get a rating from A (best) to G (worst) and a score. The better the rating and score, the lower your energy bills are likely to be.

For properties in England and Wales:

- the average energy rating is D
- the average energy score is 60

COUNCIL TAX BAND: C - Runnymede Borough Council