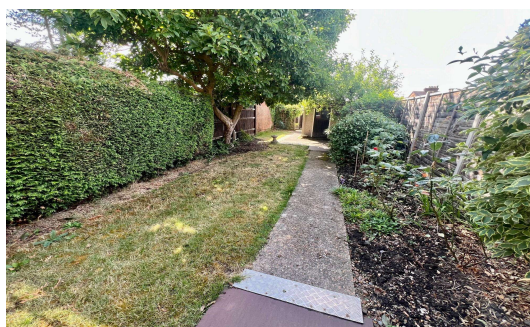
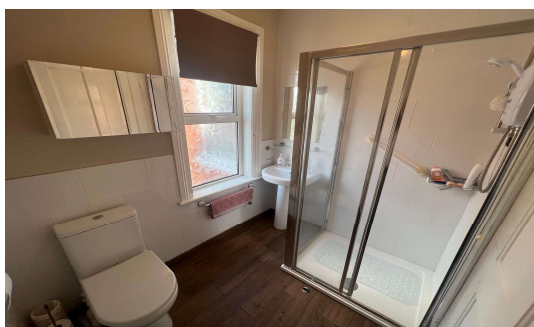
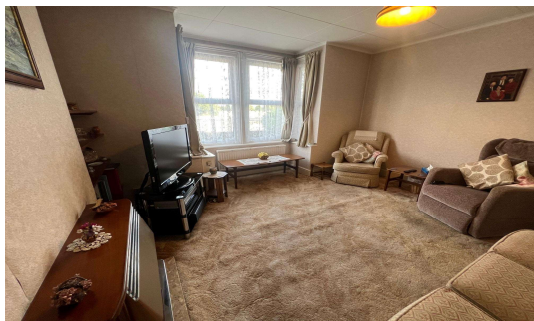




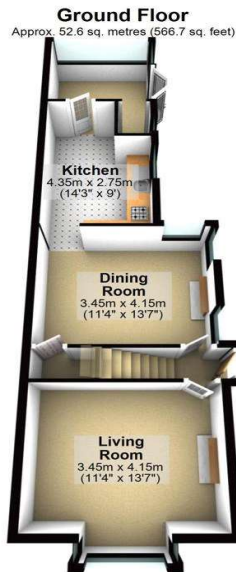
Runnemeade Road, Egham, TW20 9BL OIEO £465,000 Freehold



A rarely available three bedroom Edwardian semi-detached residence located in Central Egham just yards from Historic Runnymede, The River Thames and the recently completed Magna Square, with an array of restaurants and Everyman Cinema. Accommodation comprises entrance hall, three reception rooms, kitchen, first floor shower room, detached garage to rear and a private rear garden. **NO ONWARD CHAIN.**

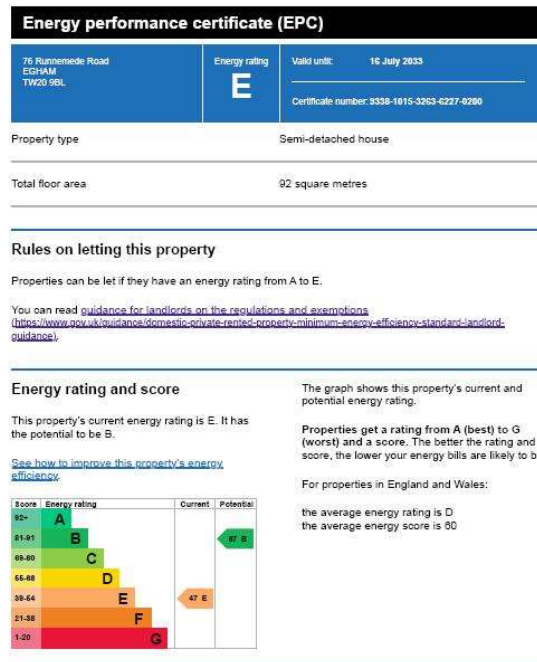
Runnemedde Road, Egham, Surrey, TW20 9BL

FLOOR PLAN



All measurements are approximate. Nevin & Wells Residential have not tested any systems or appliances.

EPC



COUNCIL TAX BAND: D - Runnymede Borough Council



@NEVIN_AND_WELLS