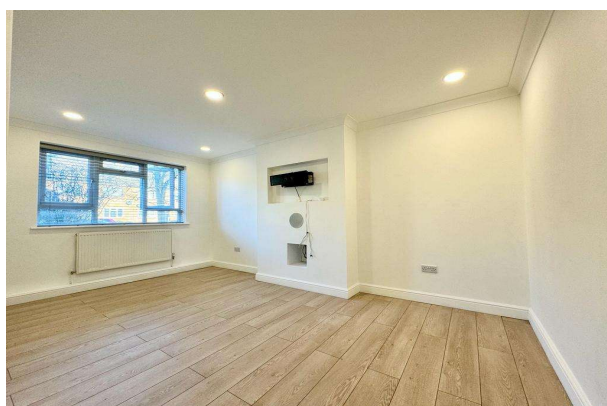


Cedar Court, Egham, Surrey, TW20 9DB

£1,500pcm Guide Price

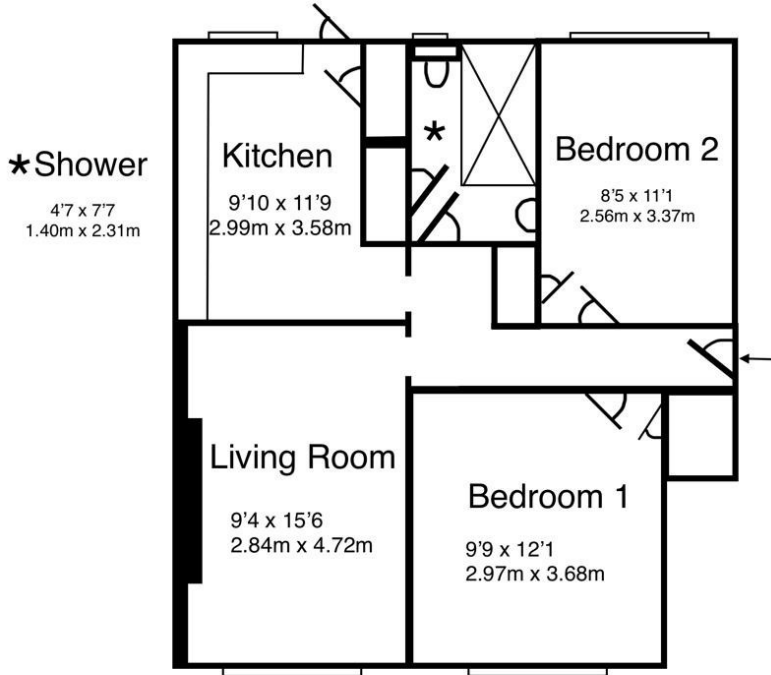


An absolutely stunning ground floor apartment located in a cul de sac within just yards of High Street amenities, Magna Square, mainline train station and The River Thames. Accommodation comprises entrance hallway, lounge, recently installed kitchen, luxury shower room, two double bedrooms and landscaped private rear garden.

AVAILABLE NOW - UNFURNISHED

Cedar Court, Egham, Surrey, TW20 9DB

FLOORPLAN



APPROX. GROSS INTERNAL FLOOR AREA 612 SQ. FT 56.8 SQ.METERS

EPC

21 Cedar Court EGHAM TW20 9DB	Energy rating C
Valid until 14 June 2033	Certificate number 0370-2064-1260-2697-3735

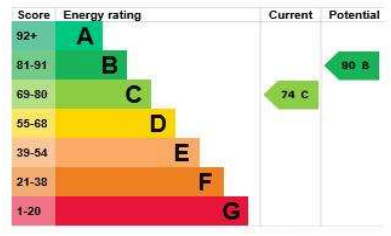
Property type	End-terrace house
Total floor area	56 square metres

Rules on letting this property

Properties can be let if they have an energy rating from A to E.
You can read [guidance for landlords on the regulations and exemptions](#).

Energy rating and score

This property's current energy rating is C. It has the potential to be B.
See [how to improve this property's energy efficiency](#).



The graph shows this property's current and potential energy rating.

Properties get a rating from A (best) to G (worst) and a score. The better the rating and score, the lower your energy bills are likely to be.

For properties in England and Wales:

- the average energy rating is D
- the average energy score is 60

COUNCIL TAX BAND: C - Runnymede Borough Council