



Henley Court, Egham, Surrey, TW20 9DZ **£1,450 pcm Guide Price**

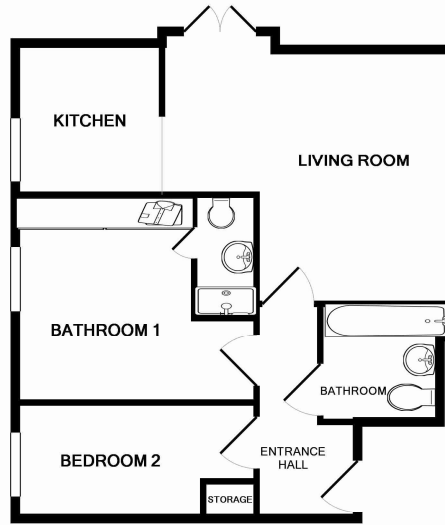


An excellent opportunity to acquire this two bedroom ground floor apartment with courtyard garden area. Located on the High Street, accommodation comprises entrance hallway, lounge/dining room, fitted kitchen, en-suite facilities and luxury bathroom.

AVAILABLE 25th March 2024 - UNFURNISHED

Henley Court, Egham, Surrey, TW20 9DZ

FLOORPLAN



TOTAL APPROX. FLOOR AREA 514 SQ.FT. (47.8 SQ.M.)

Whilst every attempt has been made to ensure the accuracy of the floor plan contained here, measurements of doors, windows, rooms and any other items are approximate and no responsibility is taken for any error, omission, or mis-statement. This plan is for illustrative purposes only and should be used as such by any prospective purchaser. The services, systems and appliances shown have not been tested and no guarantee as to their operability or efficiency can be given.
Made with Metropix ©2014

EPC

Flat 4 Henley Court Denham Road EGHAM TW20 9DZ		Energy rating C
Valid until 31 March 2023	Certificate number 94637727/0000/0004/0006	
Property type	Ground-floor flat	
Total floor area	60 square metres	

Rules on letting this property

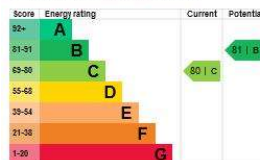
Properties can be rented if they have an energy rating from A to E.

If the property is rated F or G, it cannot be let, unless an exemption has been registered. You can read [guidance for landlords on the regulations and exemptions](#).

Energy efficiency rating for this property

This property's current energy rating is C. It has the potential to be B.

[See how to improve this property's energy performance.](#)



The graph shows this property's current and potential energy efficiency.

Properties are given a rating from A (most efficient) to G (least efficient).

Properties are also given a score. The higher the number the lower your fuel bills are likely to be.

For properties in England and Wales:

- the average energy rating is D
- the average energy score is 60

COUNCIL TAX BAND: D