



Rusham Road, Egham, Surrey, TW20 9LS

£1,150 pcm Guide Price

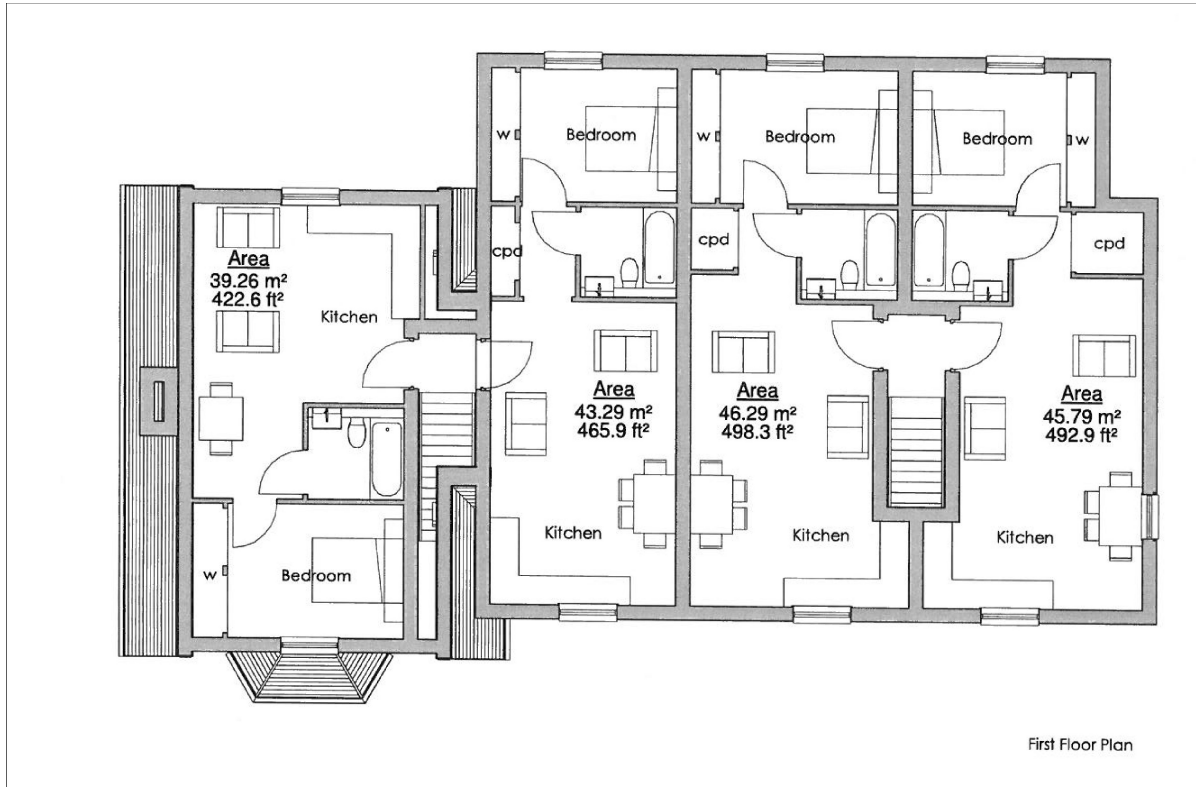


One bedroom first floor apartment finished to a very high specification, situated within a minutes walk to Egham mainline station. The apartments benefit from fully fitted kitchens, bathroom with shower over, double bedroom with fitted wardrobes. Further benefits include communal gardens to rear, off street parking facilities and offered unfurnished. No children or pets.

Available 27th March 2024 - Unfurnished

Rusham Road, Egham, Surrey, TW20 9LS

FLOOR PLAN



All measurements are approximate. Nevin and Wells Residential have not tested any systems or appliances.

EPC

Flat 2 Bissamont Place 9, Rusham Road EGHAM TW20 9LS	Energy rating C
Valid until 31 January 2027	Certificate number 8893-7832-4210-5999-0906

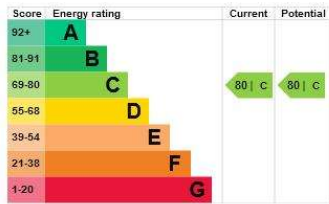
Property type	Ground-floor flat
Total floor area	45 square metres

Rules on letting this property

Properties can be let if they have an energy rating from A to E.
You can read [guidance for landlords on the regulations and exemptions](#).

Energy efficiency rating for this property

This property's current energy rating is C. It has the potential to be C.
[See how to improve this property's energy performance.](#)



The graph shows this property's current and potential energy efficiency.
Properties are given a rating from A (most efficient) to G (least efficient).
Properties are also given a score. The higher the number the lower your fuel bills are likely to be.
For properties in England and Wales:

COUNCIL TAX BAND: C - Runnymede Borough Council